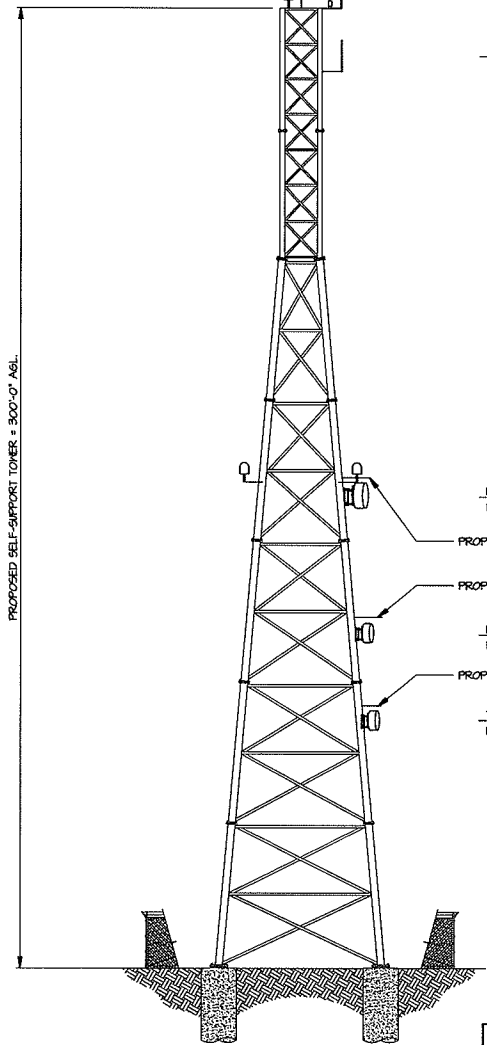


PROPOSED FAA OBSTRUCTION TOWER
BEACON LIGHT (AS REQUIRED BY FAA).

LIGHTING PROTECTION

307'-0" AGL
PROPOSED EQUIPMENT

285'-0" AGL
PROPOSED EQUIPMENT



PROPOSED SELF-SUPPORT TOWER - 300'-0" AGL

145'-0" AGL
PROPOSED EQUIPMENT

PROPOSED MM ICE-SHIELD

PROPOSED MM ICE-SHIELD

115'-0" AGL
PROPOSED EQUIPMENT

PROPOSED MM ICE-SHIELD

78'-0" AGL
PROPOSED EQUIPMENT

TOWER ELEVATIONS
NOT TO SCALE

** ALL DIMENSIONS ARE
CENTERLINE OF ANTENNA
OR DISH.
REFERENCE DATUM NAD83

| Color Code chart | |
|------------------|---------------------------|
| Antenna Line | Color Code |
| P25 TX | |
| P25 RX | |
| ITA | |
| Interop | |
| Mutual Aid VHF | Yellow |
| Mutual Aid UHF | |
| Mutual Aid 800 | White |
| Microwave | |
| AW to HP | Label to Site Pointing To |
| AW to JBC | Label to Site Pointing To |
| AW to Mustang | Label to Site Pointing To |

| Tower Loading Animal Welfare | | | | | | | |
|------------------------------|-------------------|---------------------------|---------------------------|-------------------|-------------------|-------------------|-------------------|
| | P25 TX | P25 RX | Tower Top Amplifier Model | Interop-800 | Mutual Aid VHF | Mutual Aid UHF | Mutual Aid 800 |
| Antenna Model | DS7A08F36U-N | DS7C10F36U-N | CP00732 (8 LB.) | DS8A10F36U-N | DS1F03F36U-N | DS4D06F36U-N | DS8A10F36U-N |
| Antenna height | 285 ft. (C.L.) | 307 ft. (C.L.) | 307 ft. (C.L.) | 160 ft. (C.L.) | 220 ft. (C.L.) | 220 ft. (C.L.) | 220 ft. (C.L.) |
| Coax Line Type | 1 5/8" Foam | 7/8" Foam | 1/2" Foam | 7/8" Foam | 7/8" Foam | 7/8" Foam | 7/8" Foam |
| Coax Line Length | 335 ft. | 357 ft. | 357 ft. | 210 ft. | 270 ft. | 270 ft. | 270 ft. |
| Antenna length | 10.9 ft. | 14.4 ft. | | 14.5 FT. | 12.6 FT. | 10.3 FT. | 14.5 FT. |
| Antenna weight w/o brackets | 29 lb. | 41 lb. | | 41 LB. | 37 LB. | 29 LB. | 41 LB. |
| | DSH3V3N | DSH3V3N (12X12X12-10 LB.) | | DSH3V3N | DSH3V3R | DSH3V3R | DSH3V3N |
| Mounting Hardware | (12X12X12-10 LB.) | LB.) | | (12X12X12-10 LB.) | (12X12X12-10 LB.) | (12X12X12-10 LB.) | (12X12X12-10 LB.) |
| Tower Leg Placement | C | C | C | C | C | C | C |
| Azimuth | 0° | 0° | 0° | 0° | 0° | 0° | 0° |

| Microwave loading | | | | | | | | | | | |
|--------------------|-------------------|---------------------|--------------|-------------|--------------|----------------|------------|-------------|------------|-------------|---------|
| Transmit Site name | Receive Site name | Radio model | Antenna type | Main/ Space | Antenna size | Antenna Height | Radom Type | Line Length | # of Feeds | Feeder Type | Azimuth |
| Animal Welfare | HealthPlex WT | 95MPR61-L128F30-161 | SU6-598C2H | Main | 6 | 145 | Fiberglass | 195 | 1 | E-60 | 332.46° |
| Animal Welfare | Jim Blue Creek | TBD | TBD | TBD | TBD | TBD | TBD | TBD | TBD | TBD | TBD |
| Animal Welfare | Mustang | 95MPR-L512F30-206 | UA10-W59AC2 | Main | 10 | 220 | Fiberglass | 270 | 1 | E-60 | 315.62° |
| Animal Welfare | Mustang | | UA8-W59AC2 | Space | 8 | 190 | Fiberglass | 240 | 1 | E-60 | 315.62° |

**NOTE: All 6', 8', and 10' antennas will be installed with added SMA-SK-60-2000A, which is the perimeter sway bar kit to achieve the 150mph operational windspeed requirement

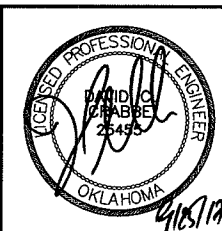
| Entry Port Layout | | | |
|-------------------|------------|------------|------------|
| Micro wave | Micro wave | Micro wave | Micro wave |
| Interop 800 | M/A VHF | M/A UHF | M/A 800 |
| P25 TX | P25 RX | P25 Test | |

CITY OF NORMAN



| NUM | DATE | DESCRIPTION |
|-----|---------|-------------|
| A | 6/30/17 | PRELIM. |
| B | 8/2/17 | PRELIM |
| O | 4/1/17 | FINAL |

ANIMAL WELFARE
TOWER ELEVATION



DESIGNED: EEC
DRAWN: EEC
CHECKED: AP

JOB #: HAR-OK-1501

C-6