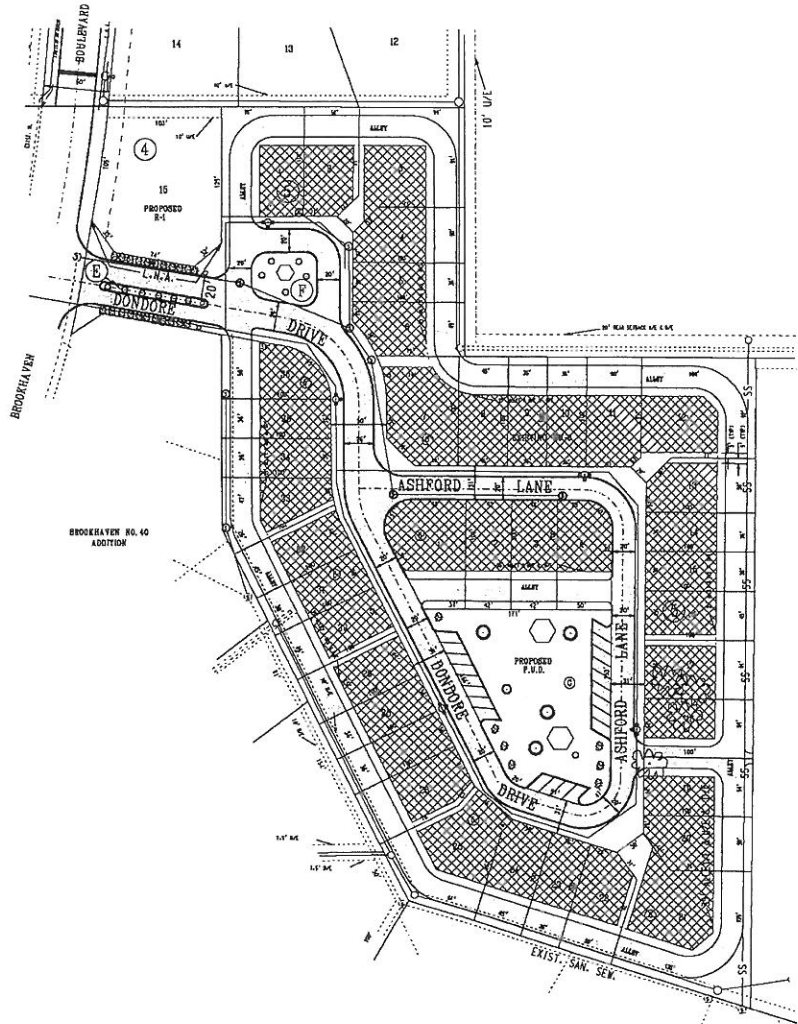
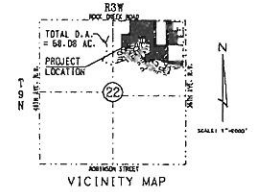


**BROOKHAVEN NO. 41 ADDITION**  
 NE 1/4, SECTION 22, T9N, R3W, I.M.  
 NORMAN, CLEVELAND COUNTY, OKLAHOMA  
**PRELIMINARY SITE DEVELOPMENT PLAN**

PAVING ST 01



☒ - DENOTES BUILDABLE AREA

**DEVELOPER:**  
 Cleb, LLC  
 1203 Brookhaven Boulevard  
 Norman, Oklahoma 73072  
 405-329-0258

**ENGINEER/SURVEYOR**  
 CLOUD PLANNING & ENGINEERING SERVICES, LLC  
 Phil Cloud, P.E. No. 10849, L.S. No. 1160  
 405 Banister Court  
 Norman, Oklahoma 73072

<b>ENGINEERS SURVEYORS PLANNERS</b> <small>C.L. No. 5378 Lic. State of Oklahoma - 608 Southern Blvd., Norman, Ok. - 405-329-0258</small>	 <b>CPES</b> <b>Cloud Planning &amp; Engineering Services</b>	
	<b>BROOKHAVEN NO. 41 ADDITION</b> <small>NE 1/4, SECTION 22, T9N, R3W, I.M.</small> <b>PRELIMINARY SITE DEVELOPMENT PLAN</b> <small>(SHEET NUMBER NOT KNOWN)</small>	
<small>Drawn by: JLS/MSD; Checked by: JLS/MSD; Date: 05/28/2014; Rev: 1</small> <small>Prep. File: 20140528_SiteDevelopment_Plan.dwg</small>	<small>Job No. 1405</small> <small>Sheet 3 of 3</small>	<small>P-029</small>