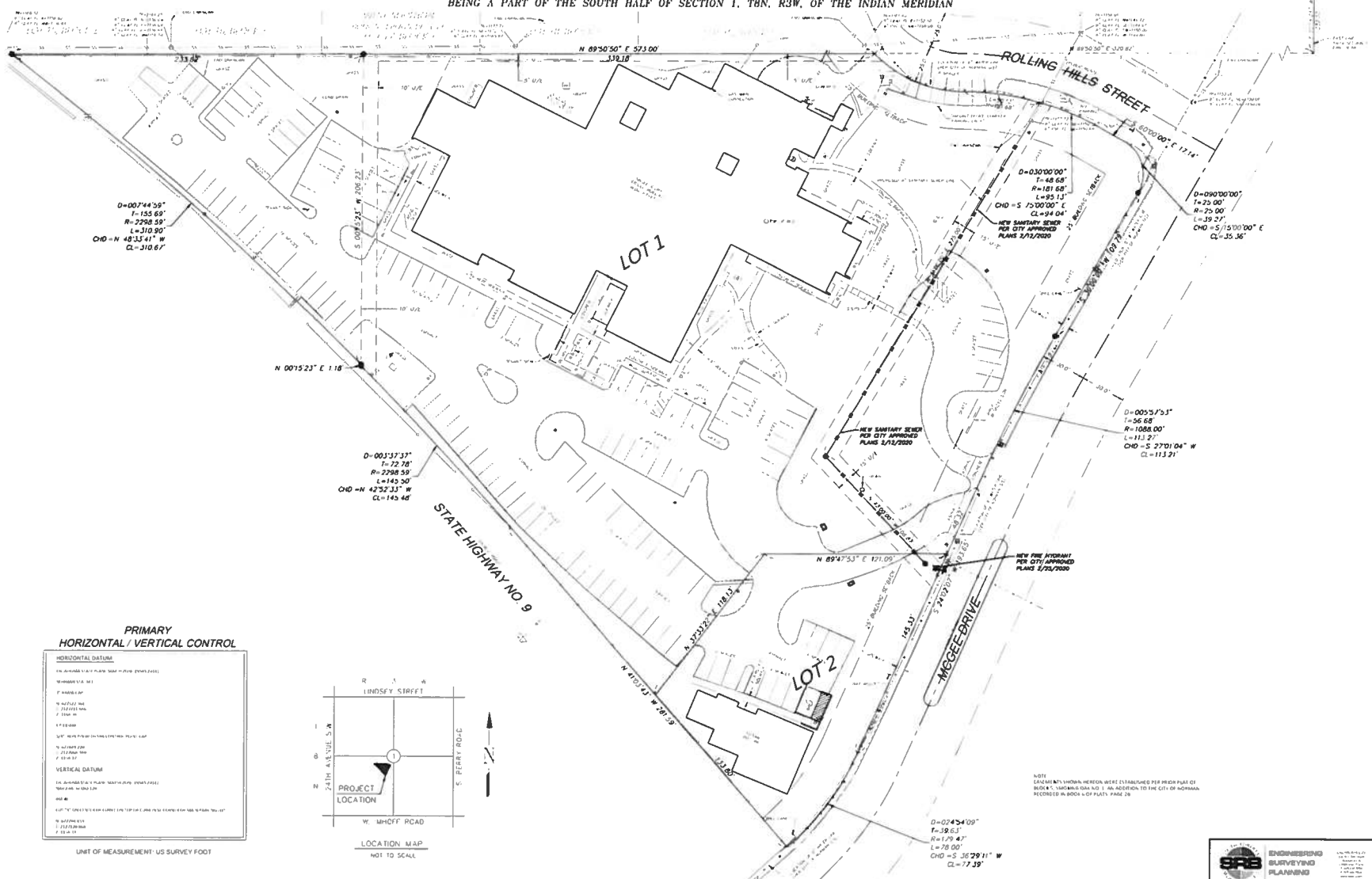


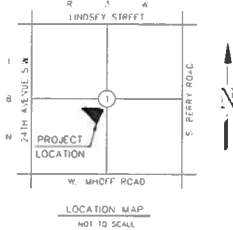
# SITE PLAN of HIPOINT OFFICE COMPLEX

A RE-PLAT OF BLOCK 5 SMOKING OAK NO. 1,  
AN ADDITION TO THE CITY OF NORMAN, CLEVELAND COUNTY, OKLAHOMA  
BEING A PART OF THE SOUTH HALF OF SECTION 1, T8N, R3W, OF THE INDIAN MERIDIAN



**PRIMARY  
HORIZONTAL / VERTICAL CONTROL**

HORIZONTAL DATUM	
1. IN. ADJUSTED PLATE	MARK 10 (PVA 2011)
2. 1/4" DIA. VIAL	MARK 10 (PVA 2011)
3. 1/4" DIA. VIAL	MARK 10 (PVA 2011)
4. 1/4" DIA. VIAL	MARK 10 (PVA 2011)
5. 1/4" DIA. VIAL	MARK 10 (PVA 2011)
6. 1/4" DIA. VIAL	MARK 10 (PVA 2011)
7. 1/4" DIA. VIAL	MARK 10 (PVA 2011)
8. 1/4" DIA. VIAL	MARK 10 (PVA 2011)
9. 1/4" DIA. VIAL	MARK 10 (PVA 2011)
10. 1/4" DIA. VIAL	MARK 10 (PVA 2011)
11. 1/4" DIA. VIAL	MARK 10 (PVA 2011)
12. 1/4" DIA. VIAL	MARK 10 (PVA 2011)
13. 1/4" DIA. VIAL	MARK 10 (PVA 2011)
14. 1/4" DIA. VIAL	MARK 10 (PVA 2011)
15. 1/4" DIA. VIAL	MARK 10 (PVA 2011)
16. 1/4" DIA. VIAL	MARK 10 (PVA 2011)
17. 1/4" DIA. VIAL	MARK 10 (PVA 2011)
18. 1/4" DIA. VIAL	MARK 10 (PVA 2011)
19. 1/4" DIA. VIAL	MARK 10 (PVA 2011)
20. 1/4" DIA. VIAL	MARK 10 (PVA 2011)
21. 1/4" DIA. VIAL	MARK 10 (PVA 2011)
22. 1/4" DIA. VIAL	MARK 10 (PVA 2011)
23. 1/4" DIA. VIAL	MARK 10 (PVA 2011)
24. 1/4" DIA. VIAL	MARK 10 (PVA 2011)
25. 1/4" DIA. VIAL	MARK 10 (PVA 2011)
26. 1/4" DIA. VIAL	MARK 10 (PVA 2011)
27. 1/4" DIA. VIAL	MARK 10 (PVA 2011)
28. 1/4" DIA. VIAL	MARK 10 (PVA 2011)
29. 1/4" DIA. VIAL	MARK 10 (PVA 2011)
30. 1/4" DIA. VIAL	MARK 10 (PVA 2011)
31. 1/4" DIA. VIAL	MARK 10 (PVA 2011)
32. 1/4" DIA. VIAL	MARK 10 (PVA 2011)
33. 1/4" DIA. VIAL	MARK 10 (PVA 2011)
34. 1/4" DIA. VIAL	MARK 10 (PVA 2011)
35. 1/4" DIA. VIAL	MARK 10 (PVA 2011)
36. 1/4" DIA. VIAL	MARK 10 (PVA 2011)
37. 1/4" DIA. VIAL	MARK 10 (PVA 2011)
38. 1/4" DIA. VIAL	MARK 10 (PVA 2011)
39. 1/4" DIA. VIAL	MARK 10 (PVA 2011)
40. 1/4" DIA. VIAL	MARK 10 (PVA 2011)
41. 1/4" DIA. VIAL	MARK 10 (PVA 2011)
42. 1/4" DIA. VIAL	MARK 10 (PVA 2011)
43. 1/4" DIA. VIAL	MARK 10 (PVA 2011)
44. 1/4" DIA. VIAL	MARK 10 (PVA 2011)
45. 1/4" DIA. VIAL	MARK 10 (PVA 2011)
46. 1/4" DIA. VIAL	MARK 10 (PVA 2011)
47. 1/4" DIA. VIAL	MARK 10 (PVA 2011)
48. 1/4" DIA. VIAL	MARK 10 (PVA 2011)
49. 1/4" DIA. VIAL	MARK 10 (PVA 2011)
50. 1/4" DIA. VIAL	MARK 10 (PVA 2011)
51. 1/4" DIA. VIAL	MARK 10 (PVA 2011)
52. 1/4" DIA. VIAL	MARK 10 (PVA 2011)
53. 1/4" DIA. VIAL	MARK 10 (PVA 2011)
54. 1/4" DIA. VIAL	MARK 10 (PVA 2011)
55. 1/4" DIA. VIAL	MARK 10 (PVA 2011)
56. 1/4" DIA. VIAL	MARK 10 (PVA 2011)
57. 1/4" DIA. VIAL	MARK 10 (PVA 2011)
58. 1/4" DIA. VIAL	MARK 10 (PVA 2011)
59. 1/4" DIA. VIAL	MARK 10 (PVA 2011)
60. 1/4" DIA. VIAL	MARK 10 (PVA 2011)
61. 1/4" DIA. VIAL	MARK 10 (PVA 2011)
62. 1/4" DIA. VIAL	MARK 10 (PVA 2011)
63. 1/4" DIA. VIAL	MARK 10 (PVA 2011)
64. 1/4" DIA. VIAL	MARK 10 (PVA 2011)
65. 1/4" DIA. VIAL	MARK 10 (PVA 2011)
66. 1/4" DIA. VIAL	MARK 10 (PVA 2011)
67. 1/4" DIA. VIAL	MARK 10 (PVA 2011)
68. 1/4" DIA. VIAL	MARK 10 (PVA 2011)
69. 1/4" DIA. VIAL	MARK 10 (PVA 2011)
70. 1/4" DIA. VIAL	MARK 10 (PVA 2011)
71. 1/4" DIA. VIAL	MARK 10 (PVA 2011)
72. 1/4" DIA. VIAL	MARK 10 (PVA 2011)
73. 1/4" DIA. VIAL	MARK 10 (PVA 2011)
74. 1/4" DIA. VIAL	MARK 10 (PVA 2011)
75. 1/4" DIA. VIAL	MARK 10 (PVA 2011)
76. 1/4" DIA. VIAL	MARK 10 (PVA 2011)
77. 1/4" DIA. VIAL	MARK 10 (PVA 2011)
78. 1/4" DIA. VIAL	MARK 10 (PVA 2011)
79. 1/4" DIA. VIAL	MARK 10 (PVA 2011)
80. 1/4" DIA. VIAL	MARK 10 (PVA 2011)
81. 1/4" DIA. VIAL	MARK 10 (PVA 2011)
82. 1/4" DIA. VIAL	MARK 10 (PVA 2011)
83. 1/4" DIA. VIAL	MARK 10 (PVA 2011)
84. 1/4" DIA. VIAL	MARK 10 (PVA 2011)
85. 1/4" DIA. VIAL	MARK 10 (PVA 2011)
86. 1/4" DIA. VIAL	MARK 10 (PVA 2011)
87. 1/4" DIA. VIAL	MARK 10 (PVA 2011)
88. 1/4" DIA. VIAL	MARK 10 (PVA 2011)
89. 1/4" DIA. VIAL	MARK 10 (PVA 2011)
90. 1/4" DIA. VIAL	MARK 10 (PVA 2011)
91. 1/4" DIA. VIAL	MARK 10 (PVA 2011)
92. 1/4" DIA. VIAL	MARK 10 (PVA 2011)
93. 1/4" DIA. VIAL	MARK 10 (PVA 2011)
94. 1/4" DIA. VIAL	MARK 10 (PVA 2011)
95. 1/4" DIA. VIAL	MARK 10 (PVA 2011)
96. 1/4" DIA. VIAL	MARK 10 (PVA 2011)
97. 1/4" DIA. VIAL	MARK 10 (PVA 2011)
98. 1/4" DIA. VIAL	MARK 10 (PVA 2011)
99. 1/4" DIA. VIAL	MARK 10 (PVA 2011)
100. 1/4" DIA. VIAL	MARK 10 (PVA 2011)



NOTE:  
LOCALITY WITHIN SECTION BEING DISBURSED PER PART OF  
BOOK 5, VOLUME 8, PAGE 1, AN ADDITION TO THE CITY OF NORMAN,  
RECORDED IN BOOK 5 OF PLATS, PAGE 18.

**ENGINEERING  
SURVEYING  
PLANNING**

1000 N. W. 100th St., Suite 100  
Oklahoma City, Oklahoma 73154  
Phone: (405) 841-1111  
Fax: (405) 841-1112  
www.spb-engineering.com