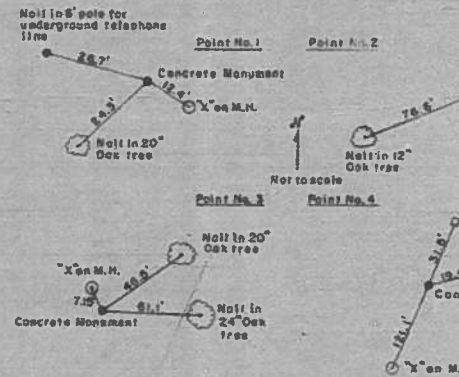


METES & BOUNDS

Beginning at a point; $30^{\circ}N89^{\circ}49'43"E$ of the center of Sec. 1, T8N, R3W, thence $N89^{\circ}49'43"E$ a distance of 461.87 feet; thence $S0^{\circ}15'23"W$ a distance of 663.99 feet; thence $S82^{\circ}09'25"W$ a distance of 106.85 feet; thence a distance of 0.00 feet; thence southeasterly along a curve to a radius of 575 feet a distance of 89.32 feet; thence southerly to the right having a radius of 228.79 feet a distance of 147.75; $S0^{\circ}15'23"W$ a distance of 400.84 feet; thence $S89^{\circ}43'53"W$ a distance of 106.10 feet; thence $N0^{\circ}15'23"E$ a distance of 106.10 feet; thence $S89^{\circ}57'44"$ of 109.76 feet; thence $N41^{\circ}03'43"W$ a distance of 698.42 feet; thence a distance of 118.81 feet; thence $N0^{\circ}15'23"E$ a distance of 332.75 feet; thence $N89^{\circ}50'50"E$ a distance of 339.10 feet; thence $S44^{\circ}26'30"E$ for a distance of 87.09 feet; thence southeasterly along a curve to the left having a radius of 181.88 feet a distance of 95.13 feet; thence $S60^{\circ}$ a distance of 39.27 feet; thence $S30^{\circ}W$ for a distance 109.79 feet; thence along a curve to the left having a radius of 1088 feet a distance of 65^{\circ}57'35"E a distance of 40 feet; thence $N24^{\circ}02'07"E$ a distance of 107.02 feet; thence along a curve to the right having a radius of 107.02 feet; thence $N30^{\circ}E$ a distance of 248.55 feet; thence along a curve to the left having a radius of 415.86 feet a distance of 130.55 feet to the point of beginning.

CONTROL POINT TIES



NOTES

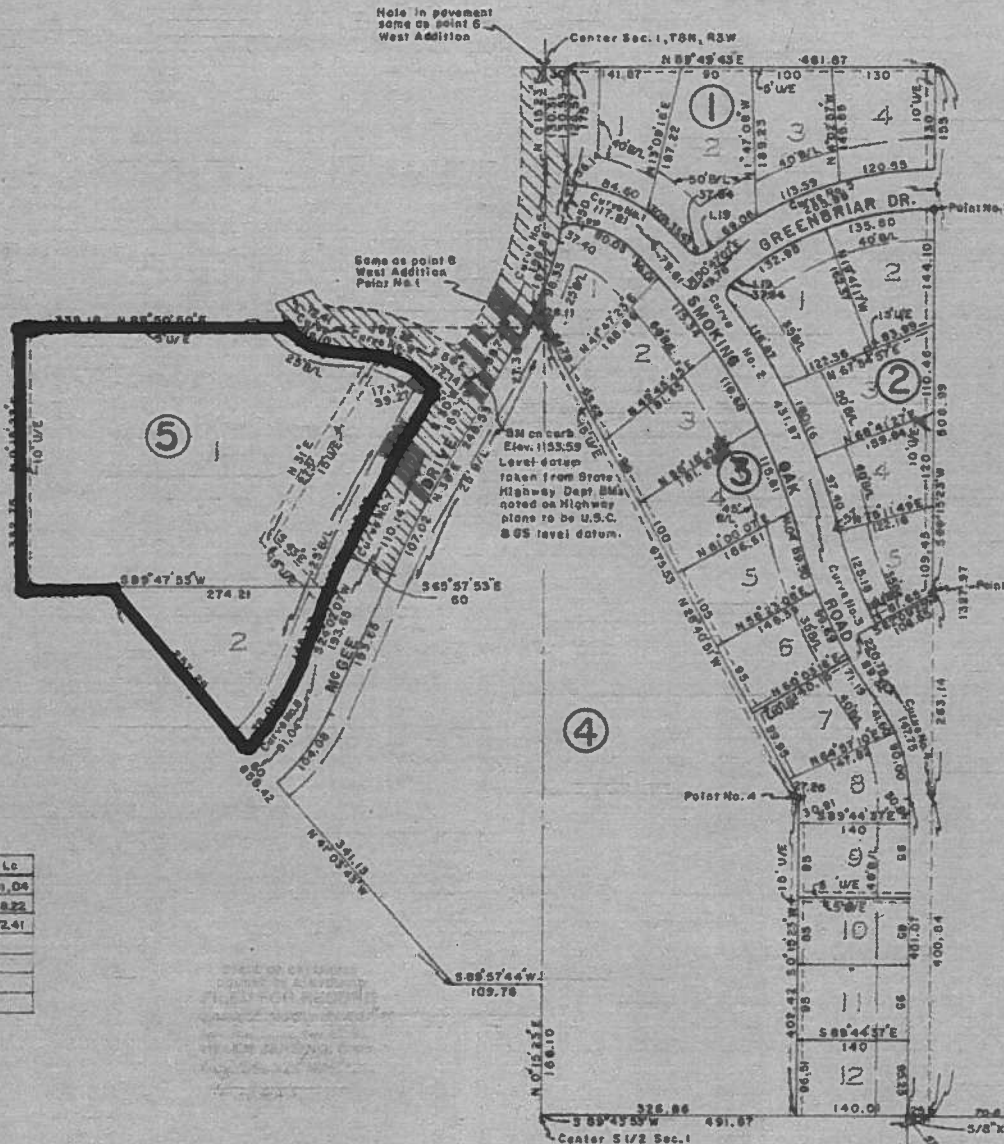
- All utilities in this addition to be underground except along the north line of Block 1.
- All black corner rods are 25'
- Hatched area is area not included in this plat.

LEGEND

- 6" diameter concrete monument

CURVE DATA (C)

CURVE	I	R	T	Lc	CURVE	I	R	T	Lc
No. 1	46°	150	62.13	117.81	No. 8	243°10'20"	47	46.25	91.04
" 2	30°	825	221.06	431.97	" 9	30°	205.88	58.39	108.22
" 3	22°	575	111.77	220.78	" 10	70°	58.27	41.50	72.41
" 4	37°	228.79	76.95	147.74					
" 5	38°20'16"	415.12	148.92	289.99					
" 6	25°44'37"	383.06	101.72	198.86					
" 7	5°57'53"	1058	58.12	110.14					



**REPLAT OF
SMOKING OAK NO. 1
ADDITION TO
NORMAN, OKLAHOMA
BEING A PART OF THE S 1/2 SEC. 1, T8N, R3W**