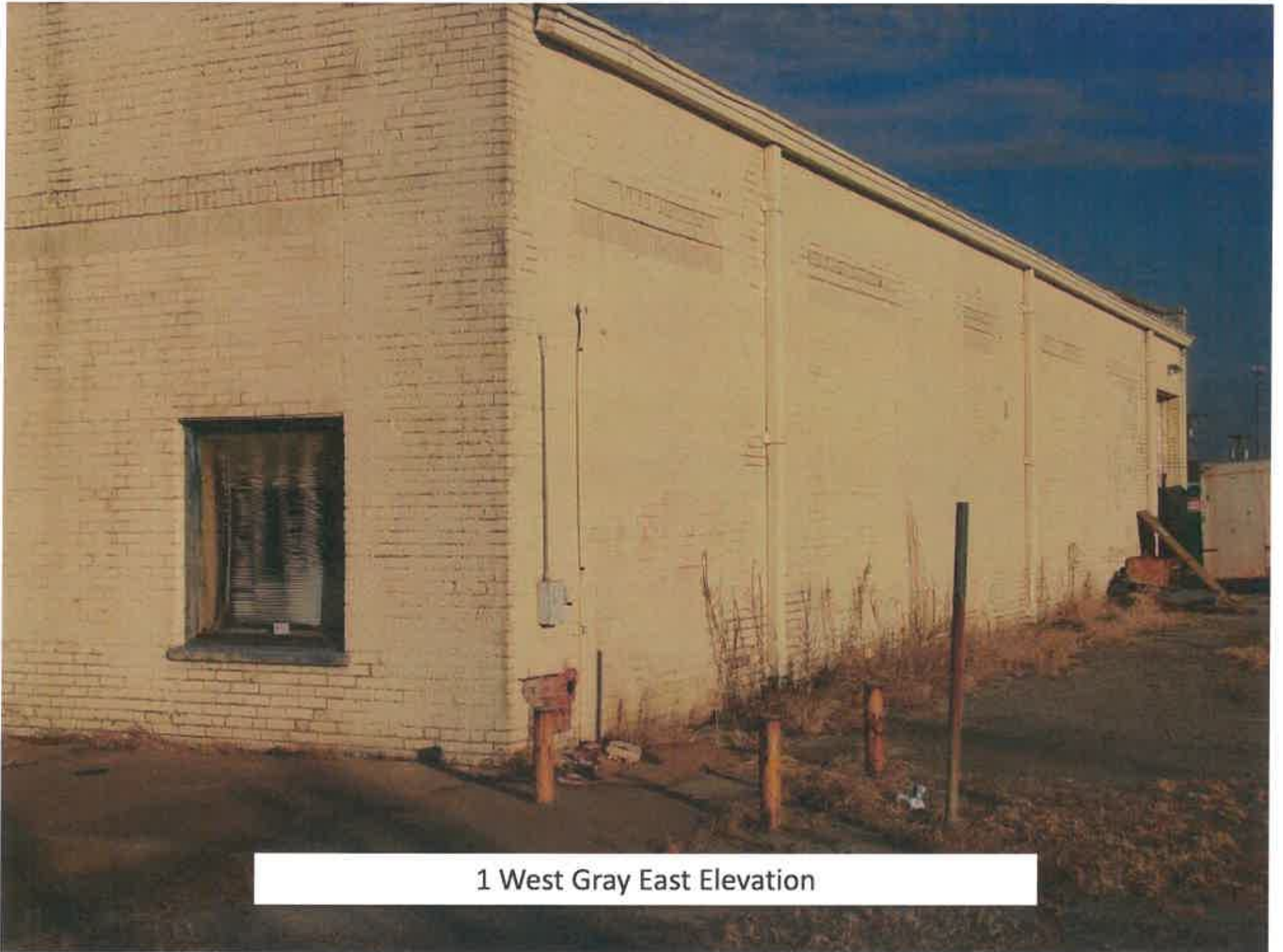
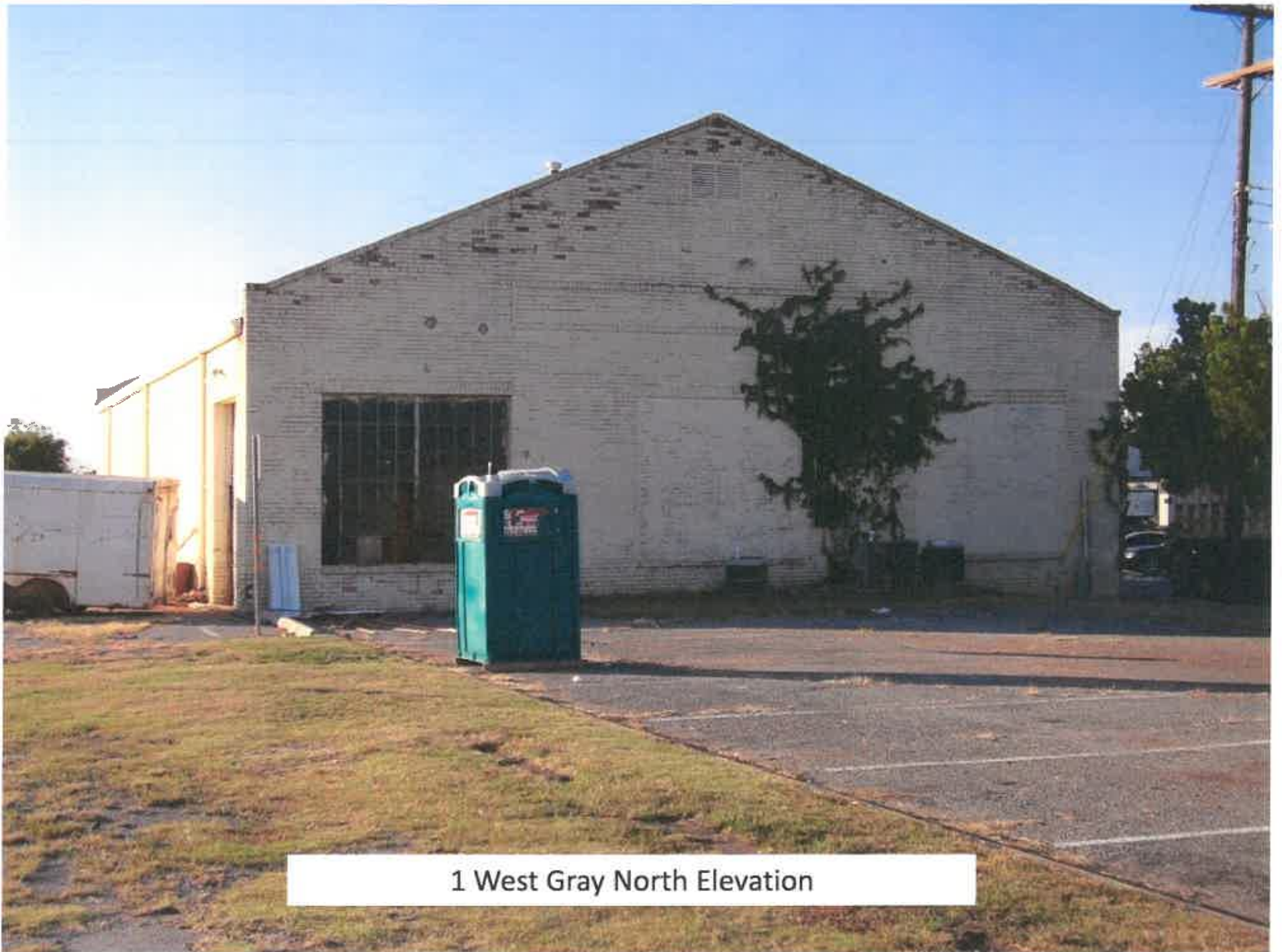


1 West Gray South Elevation



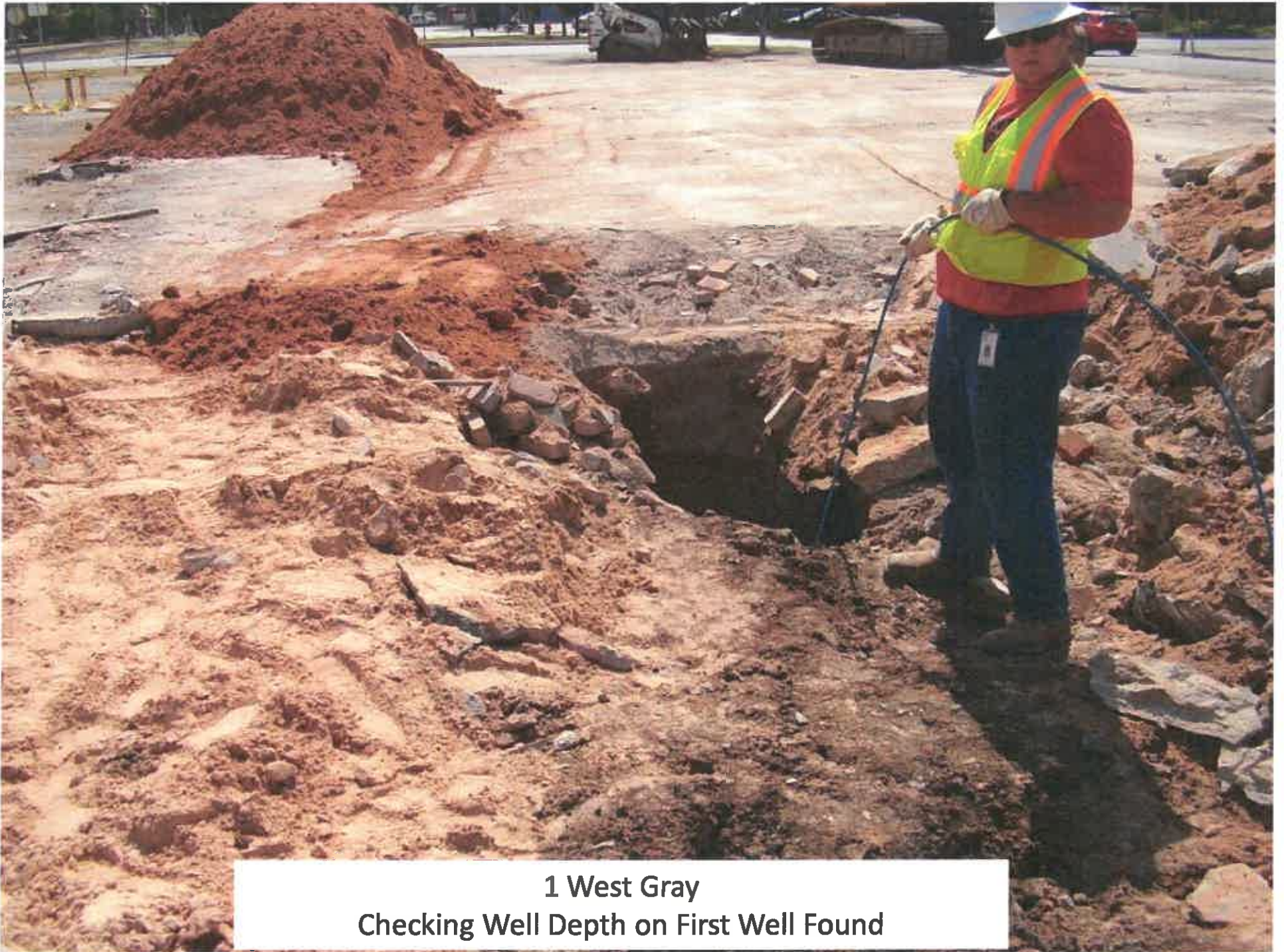
1 West Gray East Elevation



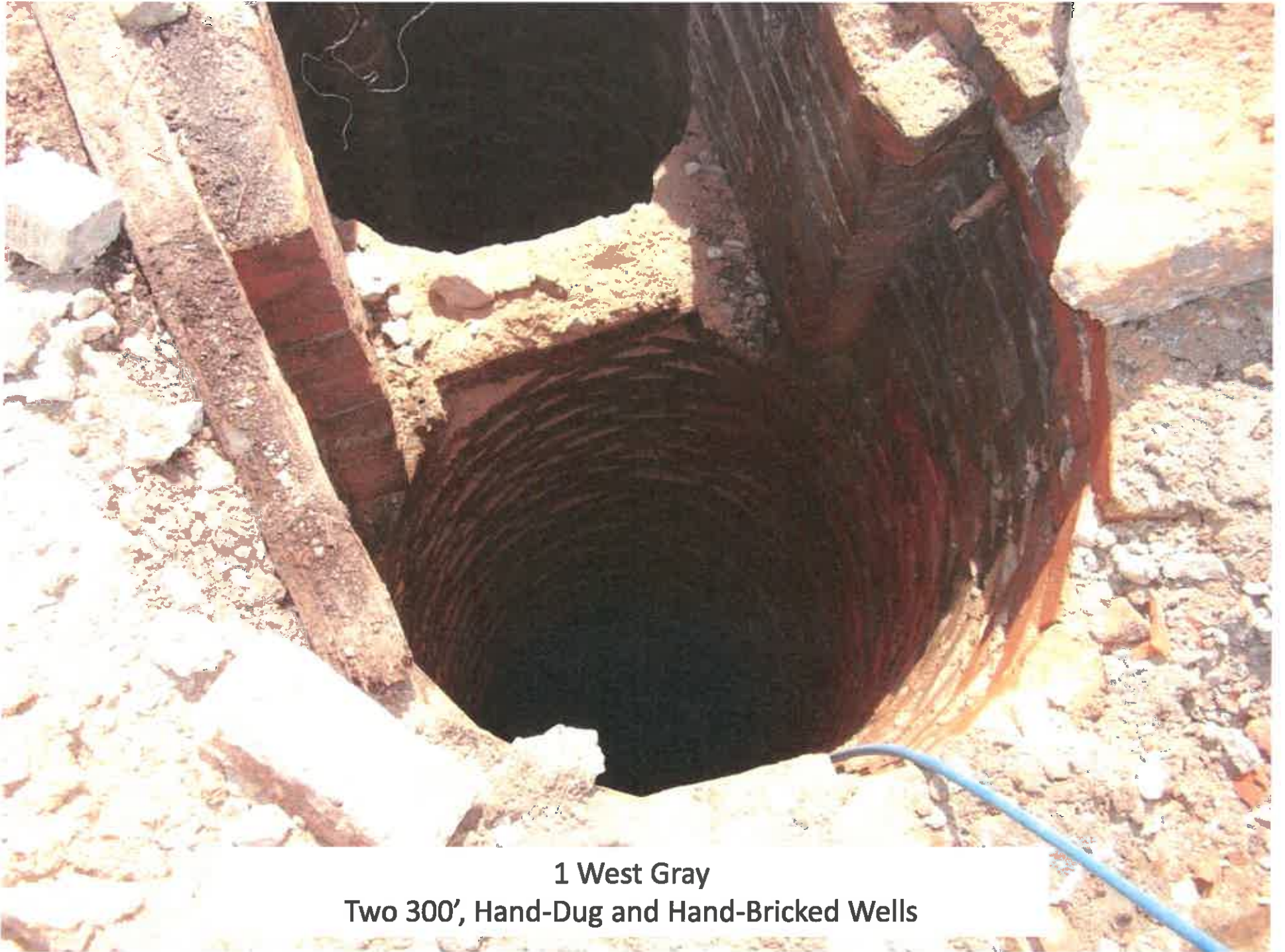
1 West Gray North Elevation



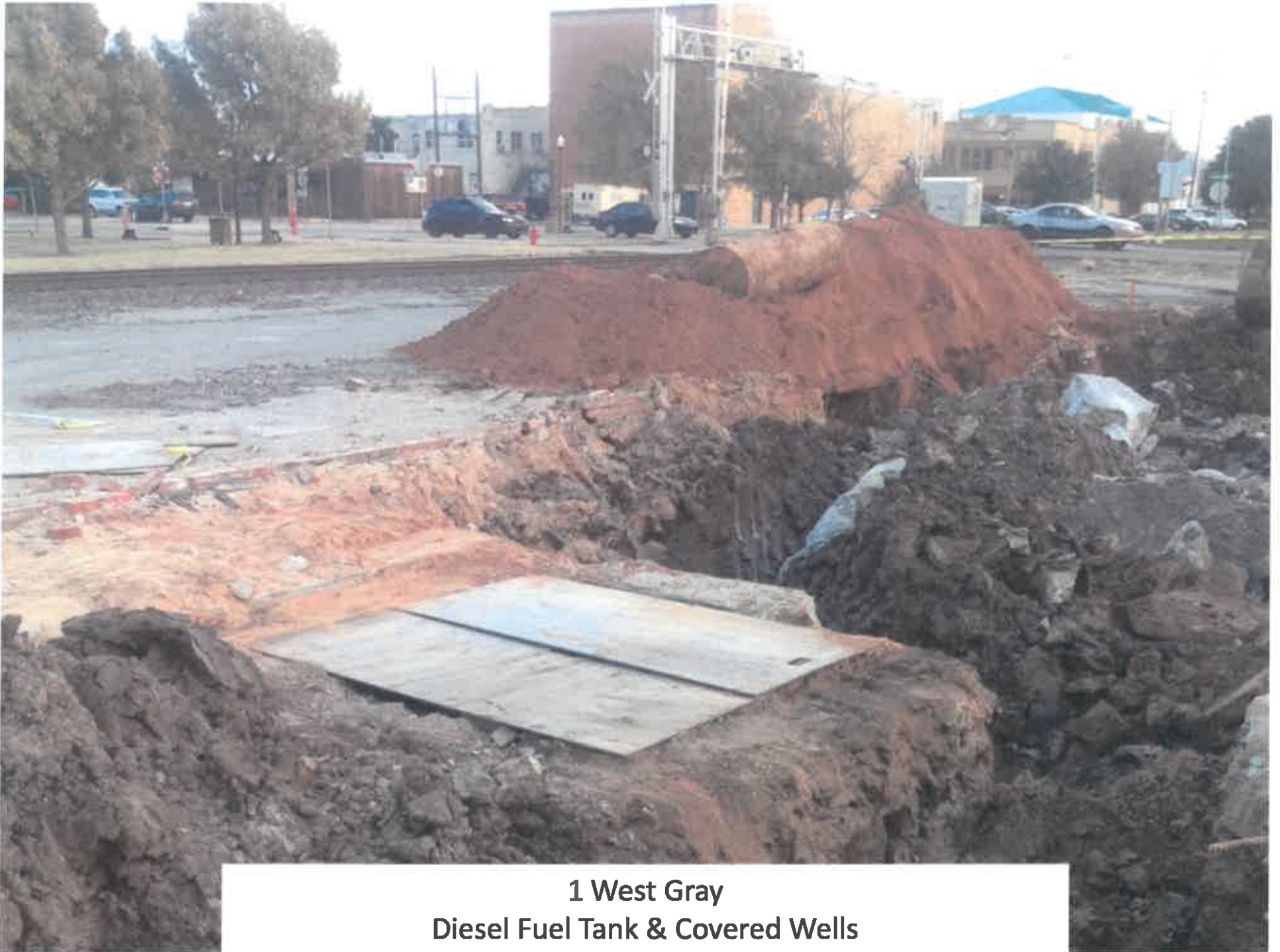
**1 West Gray Post Structure Demolition
Checking Well Depth**



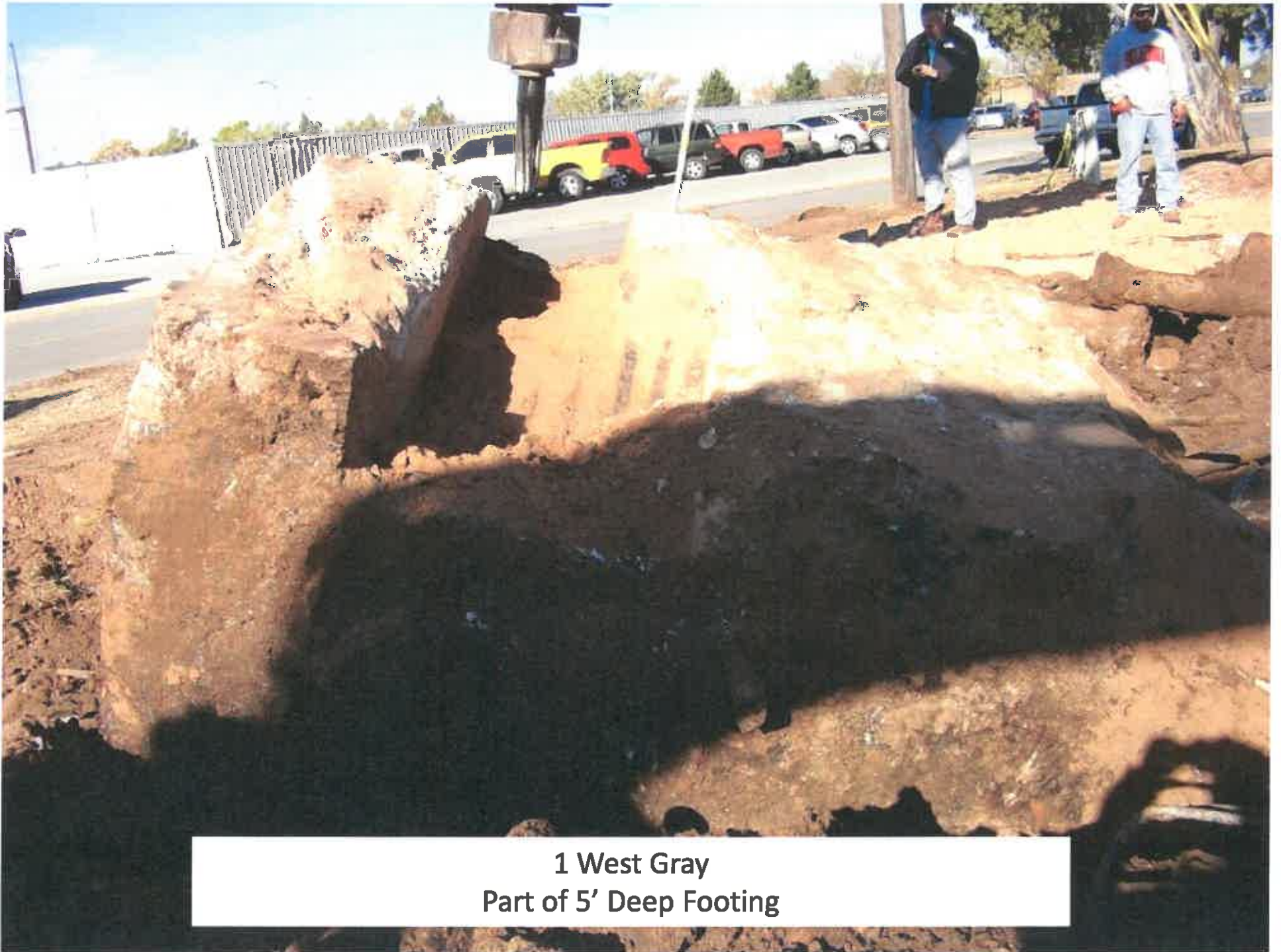
1 West Gray
Checking Well Depth on First Well Found



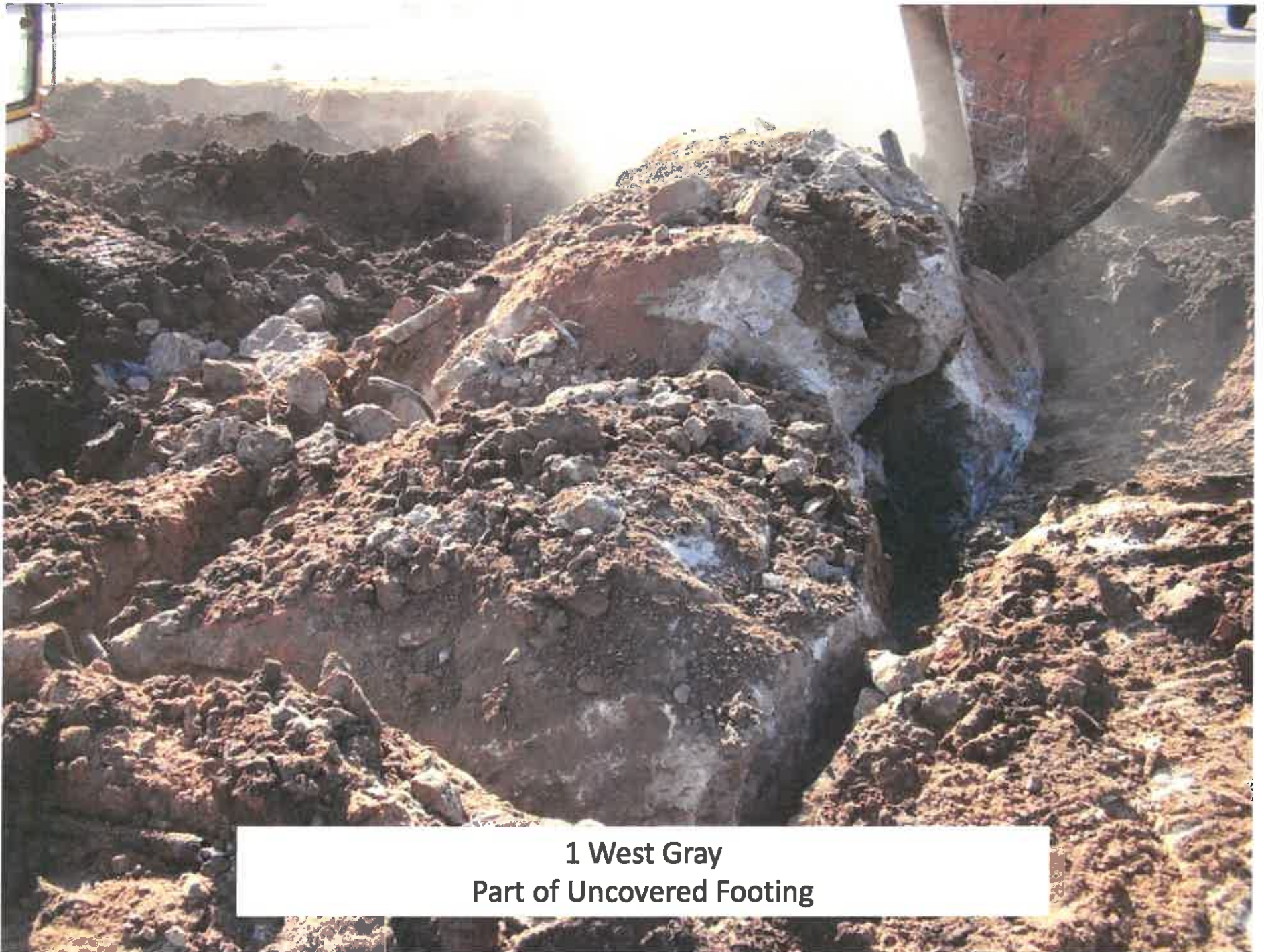
**1 West Gray
Two 300', Hand-Dug and Hand-Bricked Wells**



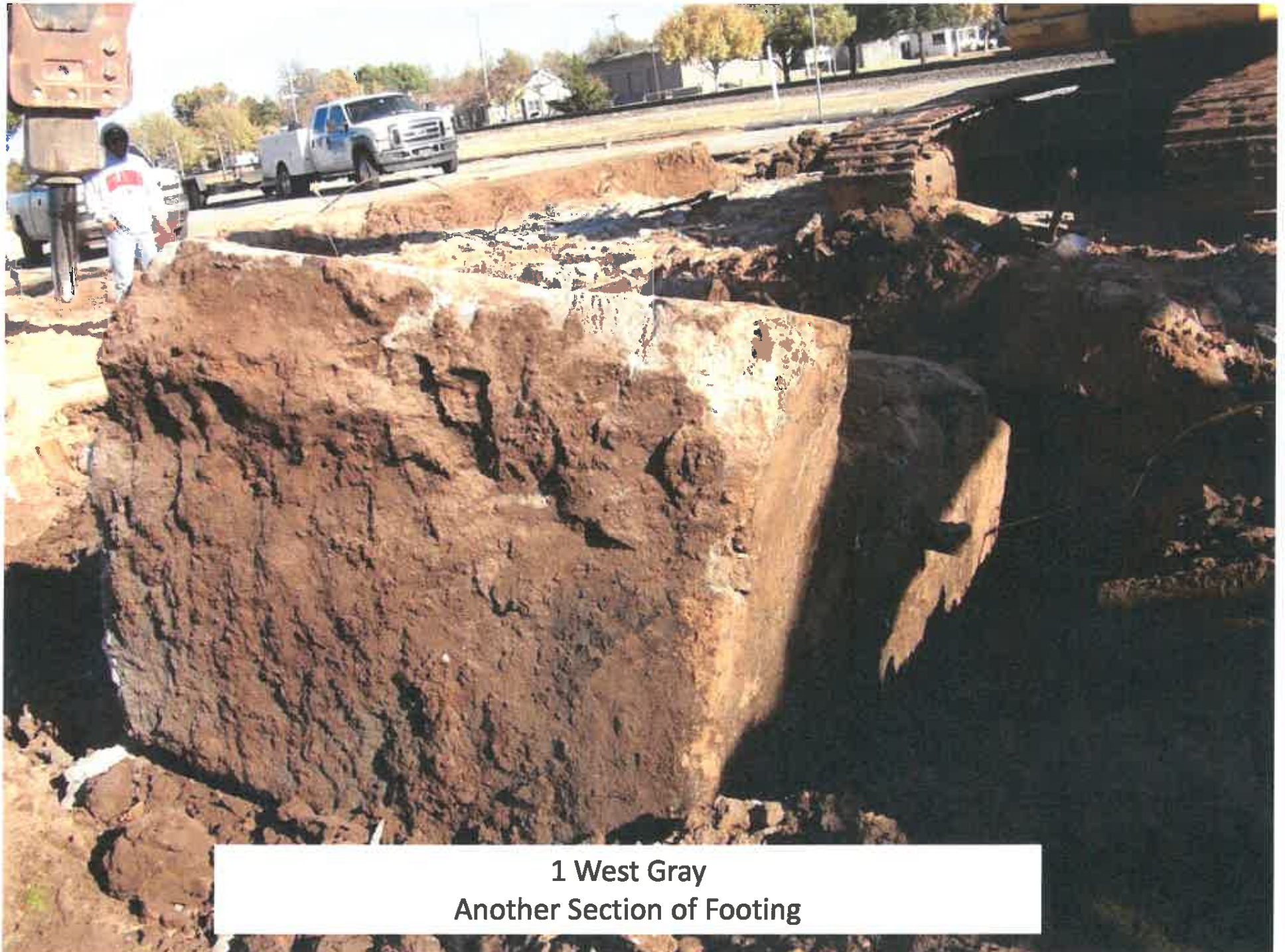
**1 West Gray
Diesel Fuel Tank & Covered Wells**



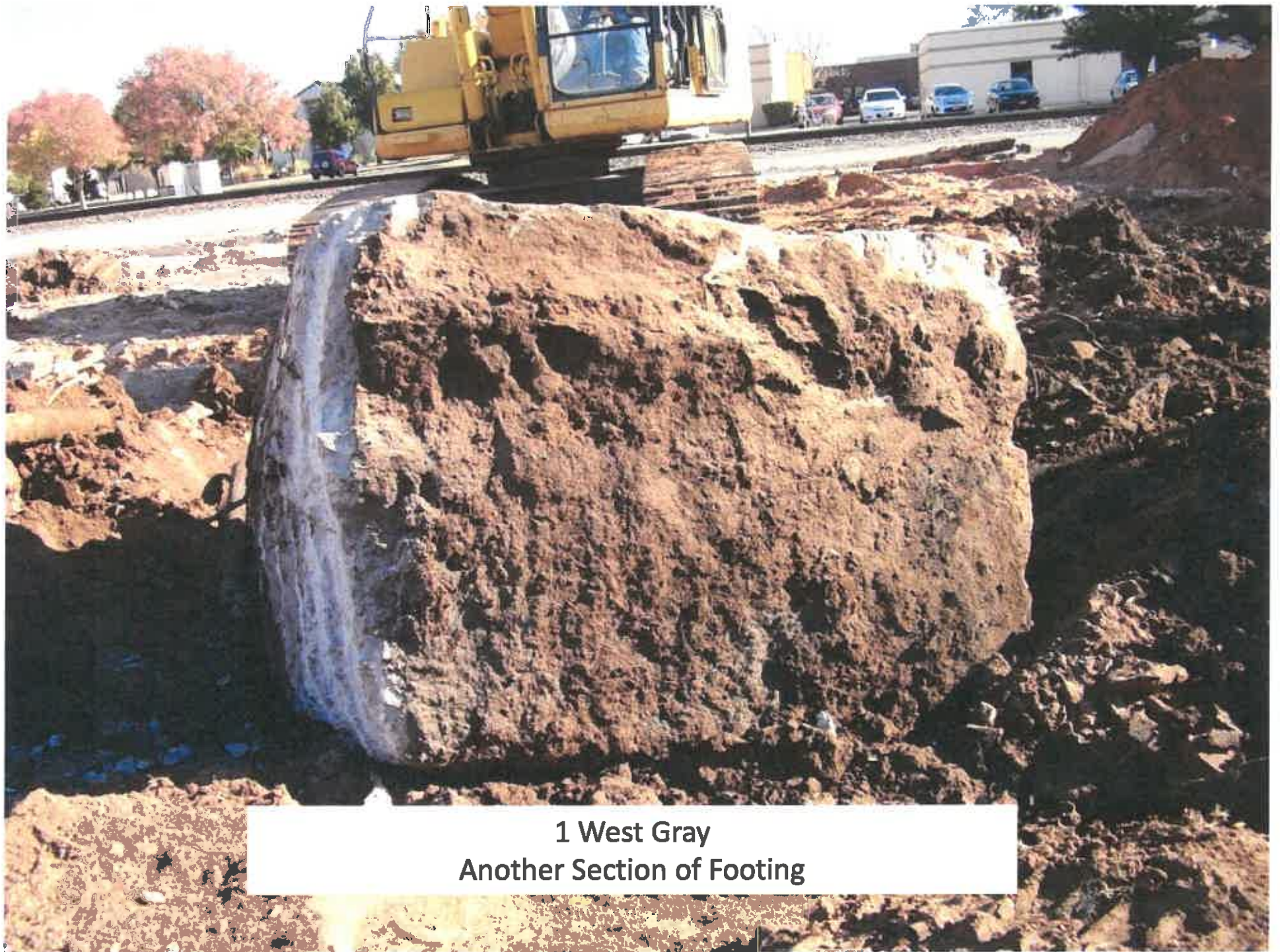
**1 West Gray
Part of 5' Deep Footing**



**1 West Gray
Part of Uncovered Footing**



1 West Gray
Another Section of Footing



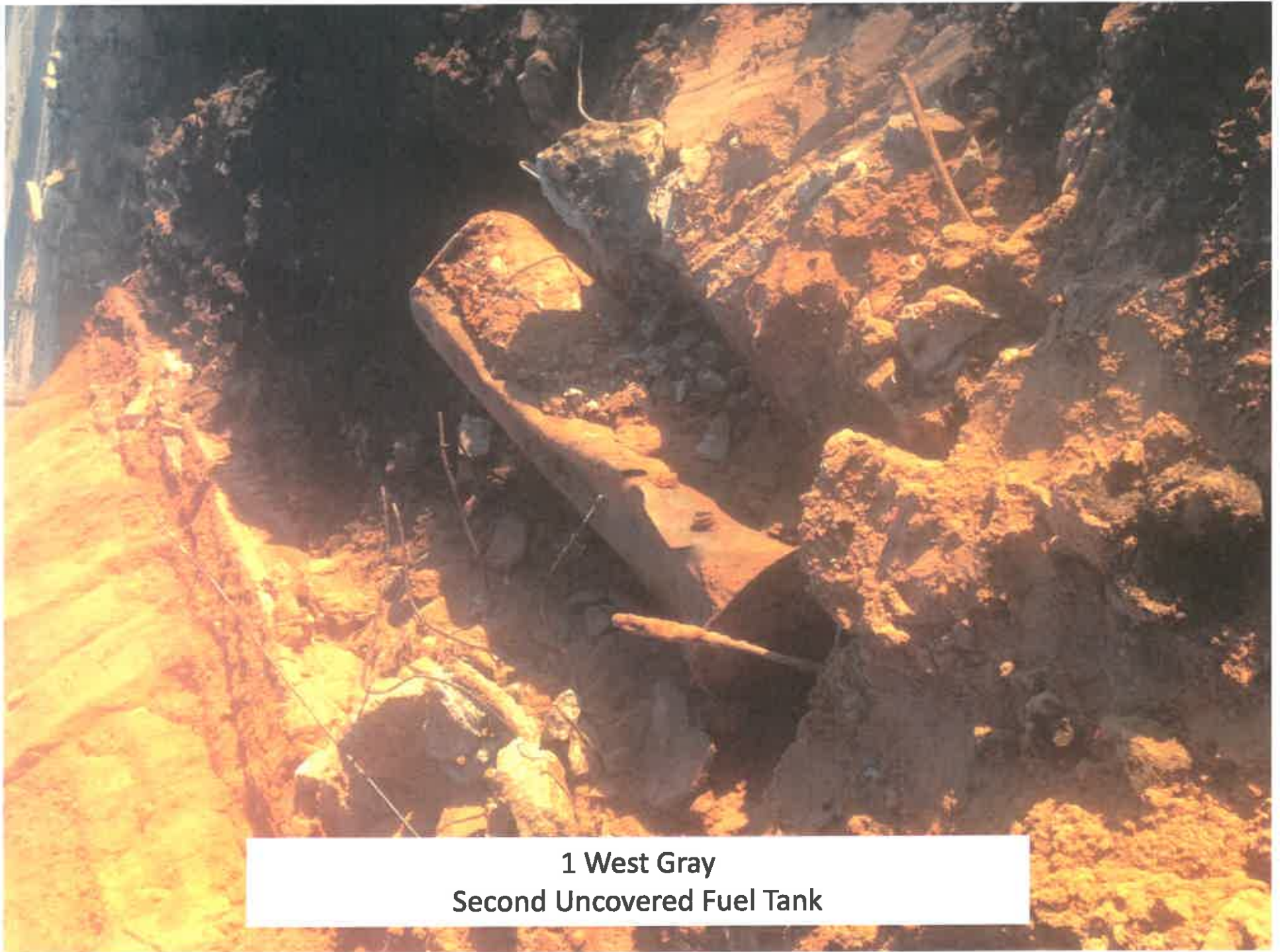
1 West Gray
Another Section of Footing



**1 West Gray
Another Piece of Footing with Jack Hammer Used to Break into
Smaller, Movable Pieces**



**1 West Gray
Contaminated Soil Area**



**1 West Gray
Second Uncovered Fuel Tank**