

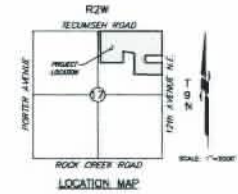
Revised

PRELIMINARY SITE DEVELOPMENT PLAN

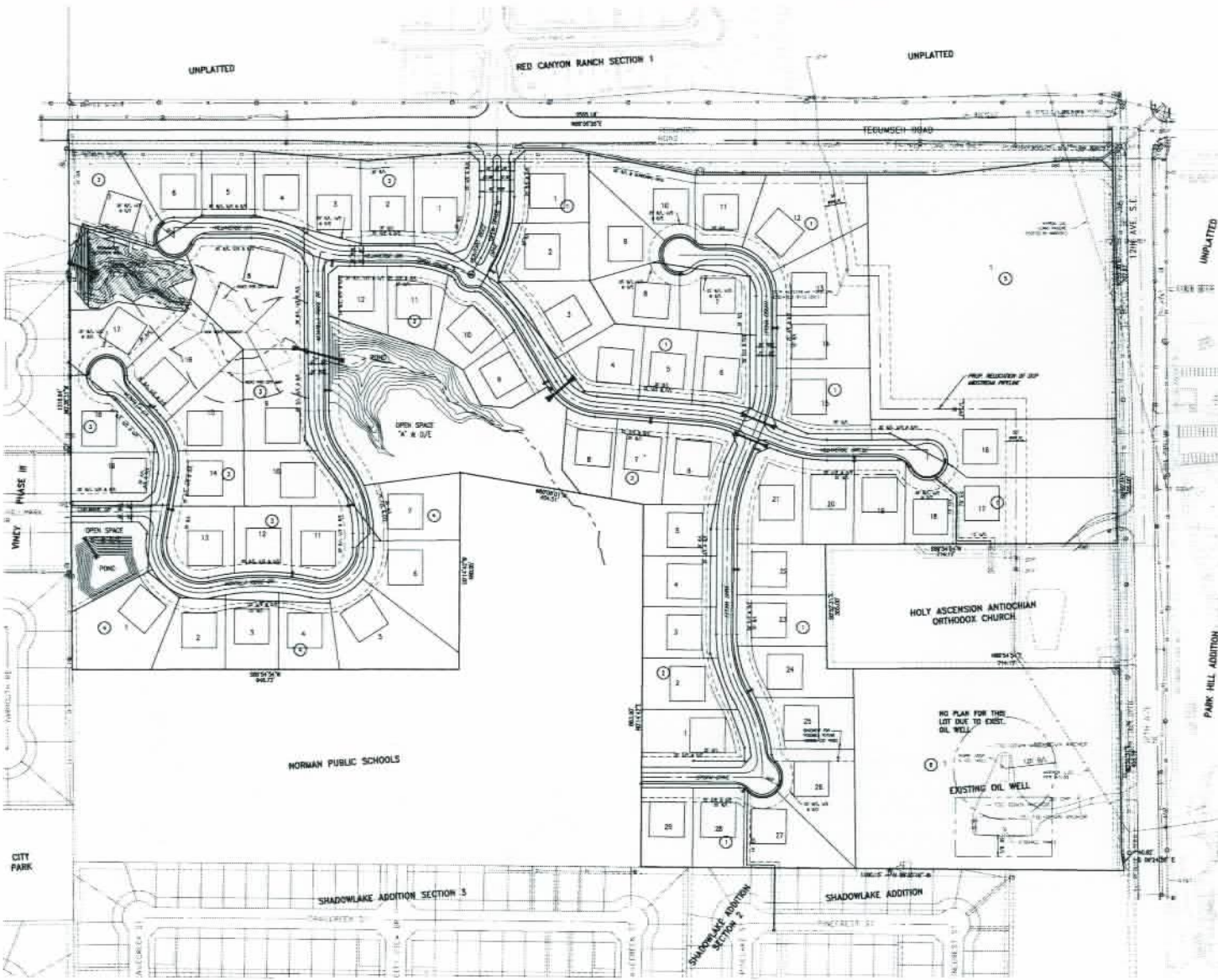
MONTORO RIDGE

A PLANNED UNIT DEVELOPMENT

A PART OF THE N.E. 1/4, SECTION 17, T9N, R2W, I.M.  
NORMAN, CLEVELAND COUNTY, OKLAHOMA



NOTES:  
1. MARKERS AND PERMITS WILL BE LOCATED AND INSTALLED IN ACCORDANCE WITH THE FINAL PLAN AND THE CITY OF NORMAN ZONING AND DEVELOPMENT



OWNER/DEVELOPER  
LANDMARK LAND COMPANY  
1402 N. POKER AVE.  
NORMAN, OKLAHOMA 73071  
PH: (405) 822-2883

PREPARED BY  
SMC Consulting Engineers, P.C.  
877 N. 10th St.  
Shawnee, Ok. Shawnee 73084  
PH: (405) 222-7718

MONTORO RIDGE  
A PLANNED UNIT DEVELOPMENT  
TECUMSEH ROAD & 122nd AVE, N.E.  
NORMAN, OKLAHOMA

SMC  
SMC Consulting Engineers, P.C.  
877 N. 10th St.  
Shawnee, Ok. Shawnee 73084  
PH: (405) 222-7718

PROJECT NO. 2401  
SCALE: 1" = 100'  
DATE: 08/20/2014  
1: PRELIMINARY SITE DEVELOPMENT PLAN