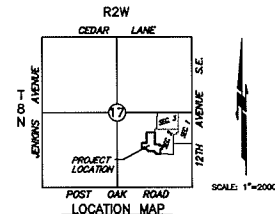


FINAL PLAT
EAGLE CLIFF SOUTH ADDITION SECTION 4
 A PART OF THE S.E. 1/4, SECTION 17, T8N, R2W I.M.
 NORMAN, CLEVELAND COUNTY, OKLAHOMA

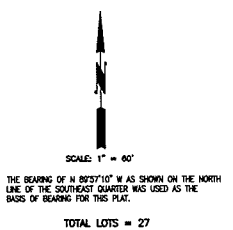
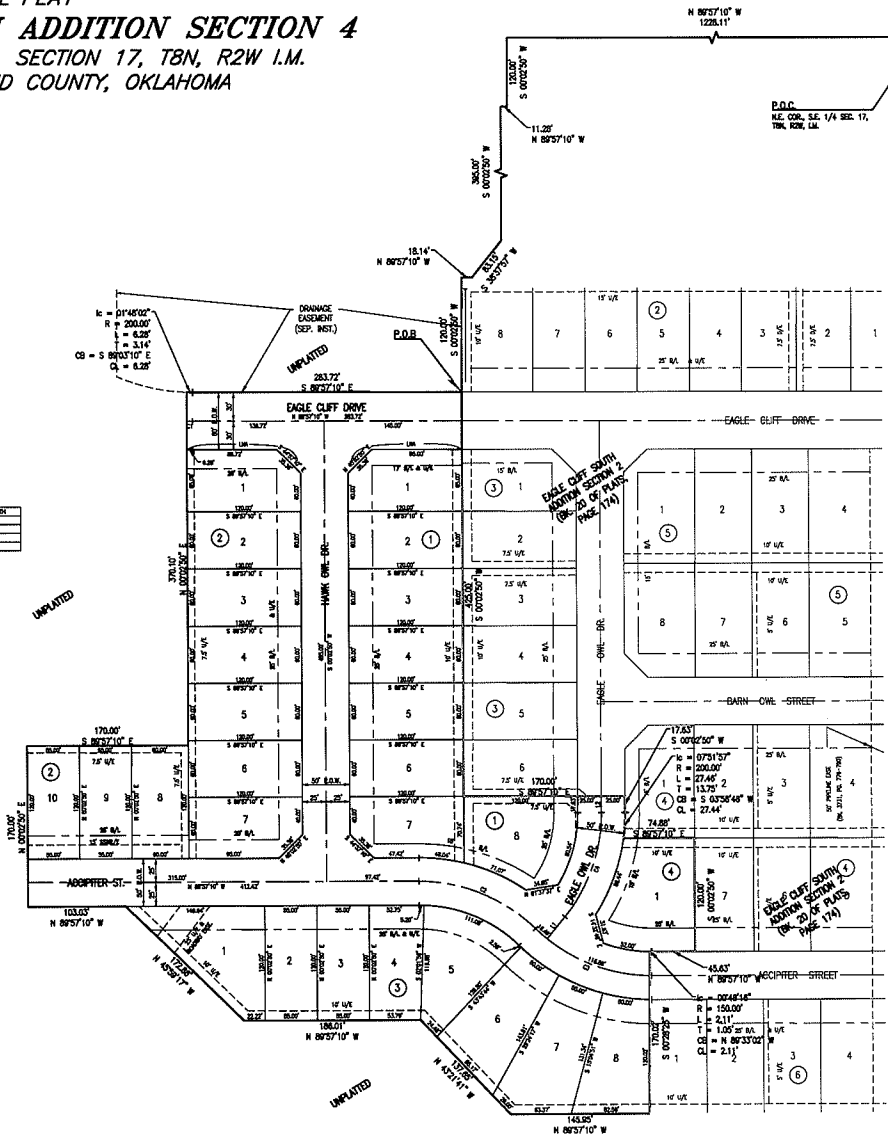


CURVE TABLE

CURVE	CHORD BEARING	CHORD LENGTH	ARC LENGTH	CHORD BEARING	CHORD LENGTH
C1	S 89°57'10" W	1228.11'	1228.11'	S 89°57'10" W	1228.11'
C2	S 89°57'10" W	11.22'	11.22'	S 89°57'10" W	11.22'
C3	S 89°57'10" W	18.14'	18.14'	S 89°57'10" W	18.14'
C4	S 89°57'10" W	283.72'	283.72'	S 89°57'10" W	283.72'
C5	S 89°57'10" W	170.00'	170.00'	S 89°57'10" W	170.00'
C6	S 89°57'10" W	170.00'	170.00'	S 89°57'10" W	170.00'
C7	S 89°57'10" W	170.00'	170.00'	S 89°57'10" W	170.00'
C8	S 89°57'10" W	170.00'	170.00'	S 89°57'10" W	170.00'
C9	S 89°57'10" W	170.00'	170.00'	S 89°57'10" W	170.00'
C10	S 89°57'10" W	170.00'	170.00'	S 89°57'10" W	170.00'
C11	S 89°57'10" W	170.00'	170.00'	S 89°57'10" W	170.00'
C12	S 89°57'10" W	170.00'	170.00'	S 89°57'10" W	170.00'
C13	S 89°57'10" W	170.00'	170.00'	S 89°57'10" W	170.00'
C14	S 89°57'10" W	170.00'	170.00'	S 89°57'10" W	170.00'
C15	S 89°57'10" W	170.00'	170.00'	S 89°57'10" W	170.00'
C16	S 89°57'10" W	170.00'	170.00'	S 89°57'10" W	170.00'
C17	S 89°57'10" W	170.00'	170.00'	S 89°57'10" W	170.00'
C18	S 89°57'10" W	170.00'	170.00'	S 89°57'10" W	170.00'
C19	S 89°57'10" W	170.00'	170.00'	S 89°57'10" W	170.00'
C20	S 89°57'10" W	170.00'	170.00'	S 89°57'10" W	170.00'
C21	S 89°57'10" W	170.00'	170.00'	S 89°57'10" W	170.00'
C22	S 89°57'10" W	170.00'	170.00'	S 89°57'10" W	170.00'
C23	S 89°57'10" W	170.00'	170.00'	S 89°57'10" W	170.00'
C24	S 89°57'10" W	170.00'	170.00'	S 89°57'10" W	170.00'
C25	S 89°57'10" W	170.00'	170.00'	S 89°57'10" W	170.00'
C26	S 89°57'10" W	170.00'	170.00'	S 89°57'10" W	170.00'
C27	S 89°57'10" W	170.00'	170.00'	S 89°57'10" W	170.00'
C28	S 89°57'10" W	170.00'	170.00'	S 89°57'10" W	170.00'
C29	S 89°57'10" W	170.00'	170.00'	S 89°57'10" W	170.00'
C30	S 89°57'10" W	170.00'	170.00'	S 89°57'10" W	170.00'
C31	S 89°57'10" W	170.00'	170.00'	S 89°57'10" W	170.00'
C32	S 89°57'10" W	170.00'	170.00'	S 89°57'10" W	170.00'
C33	S 89°57'10" W	170.00'	170.00'	S 89°57'10" W	170.00'
C34	S 89°57'10" W	170.00'	170.00'	S 89°57'10" W	170.00'
C35	S 89°57'10" W	170.00'	170.00'	S 89°57'10" W	170.00'
C36	S 89°57'10" W	170.00'	170.00'	S 89°57'10" W	170.00'
C37	S 89°57'10" W	170.00'	170.00'	S 89°57'10" W	170.00'
C38	S 89°57'10" W	170.00'	170.00'	S 89°57'10" W	170.00'
C39	S 89°57'10" W	170.00'	170.00'	S 89°57'10" W	170.00'
C40	S 89°57'10" W	170.00'	170.00'	S 89°57'10" W	170.00'
C41	S 89°57'10" W	170.00'	170.00'	S 89°57'10" W	170.00'
C42	S 89°57'10" W	170.00'	170.00'	S 89°57'10" W	170.00'
C43	S 89°57'10" W	170.00'	170.00'	S 89°57'10" W	170.00'
C44	S 89°57'10" W	170.00'	170.00'	S 89°57'10" W	170.00'
C45	S 89°57'10" W	170.00'	170.00'	S 89°57'10" W	170.00'
C46	S 89°57'10" W	170.00'	170.00'	S 89°57'10" W	170.00'
C47	S 89°57'10" W	170.00'	170.00'	S 89°57'10" W	170.00'
C48	S 89°57'10" W	170.00'	170.00'	S 89°57'10" W	170.00'
C49	S 89°57'10" W	170.00'	170.00'	S 89°57'10" W	170.00'
C50	S 89°57'10" W	170.00'	170.00'	S 89°57'10" W	170.00'

LINE TABLE

LINE	BEARING	LENGTH
L1	S 89°57'10" W	1228.11'
L2	S 89°57'10" W	11.22'
L3	S 89°57'10" W	18.14'
L4	S 89°57'10" W	283.72'
L5	S 89°57'10" W	170.00'
L6	S 89°57'10" W	170.00'
L7	S 89°57'10" W	170.00'
L8	S 89°57'10" W	170.00'
L9	S 89°57'10" W	170.00'
L10	S 89°57'10" W	170.00'
L11	S 89°57'10" W	170.00'
L12	S 89°57'10" W	170.00'
L13	S 89°57'10" W	170.00'
L14	S 89°57'10" W	170.00'
L15	S 89°57'10" W	170.00'
L16	S 89°57'10" W	170.00'
L17	S 89°57'10" W	170.00'
L18	S 89°57'10" W	170.00'
L19	S 89°57'10" W	170.00'
L20	S 89°57'10" W	170.00'
L21	S 89°57'10" W	170.00'
L22	S 89°57'10" W	170.00'
L23	S 89°57'10" W	170.00'
L24	S 89°57'10" W	170.00'
L25	S 89°57'10" W	170.00'
L26	S 89°57'10" W	170.00'
L27	S 89°57'10" W	170.00'
L28	S 89°57'10" W	170.00'
L29	S 89°57'10" W	170.00'
L30	S 89°57'10" W	170.00'
L31	S 89°57'10" W	170.00'
L32	S 89°57'10" W	170.00'
L33	S 89°57'10" W	170.00'
L34	S 89°57'10" W	170.00'
L35	S 89°57'10" W	170.00'
L36	S 89°57'10" W	170.00'
L37	S 89°57'10" W	170.00'
L38	S 89°57'10" W	170.00'
L39	S 89°57'10" W	170.00'
L40	S 89°57'10" W	170.00'
L41	S 89°57'10" W	170.00'
L42	S 89°57'10" W	170.00'
L43	S 89°57'10" W	170.00'
L44	S 89°57'10" W	170.00'
L45	S 89°57'10" W	170.00'
L46	S 89°57'10" W	170.00'
L47	S 89°57'10" W	170.00'
L48	S 89°57'10" W	170.00'
L49	S 89°57'10" W	170.00'
L50	S 89°57'10" W	170.00'



D/E = DRAINAGE EASEMENT
 UAA = LIMITS OF NO ACCESS
 U/E = UTILITY EASEMENT
 B/L = BUILDING LINE
 -1000- = ADDRESS

NOTE: THE UNIT OF MEASUREMENT SHOWN FOR ALL DIMENSIONS ON THE FINAL PLAT IS U.S. SURVEY FEET.

BENCHMARK SET BRASS CAP AT INTERSECTION OF
 EAGLE CLIFF DRIVE & HAWK OWL STREET
 ELEV. =

Date: June 27, 2012
 SMC Consulting Engineers, P.C.
 816 W. Main Street
 Oklahoma City, OK 73108
 Ph: (405)232-7775
 Oklahoma C.A.M.A. Exp. 6/30/2013
 EAGLE CLIFF SOUTH ADDITION SECTION 4
 FINAL PLAT SHEET 2 OF 2