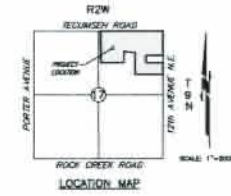
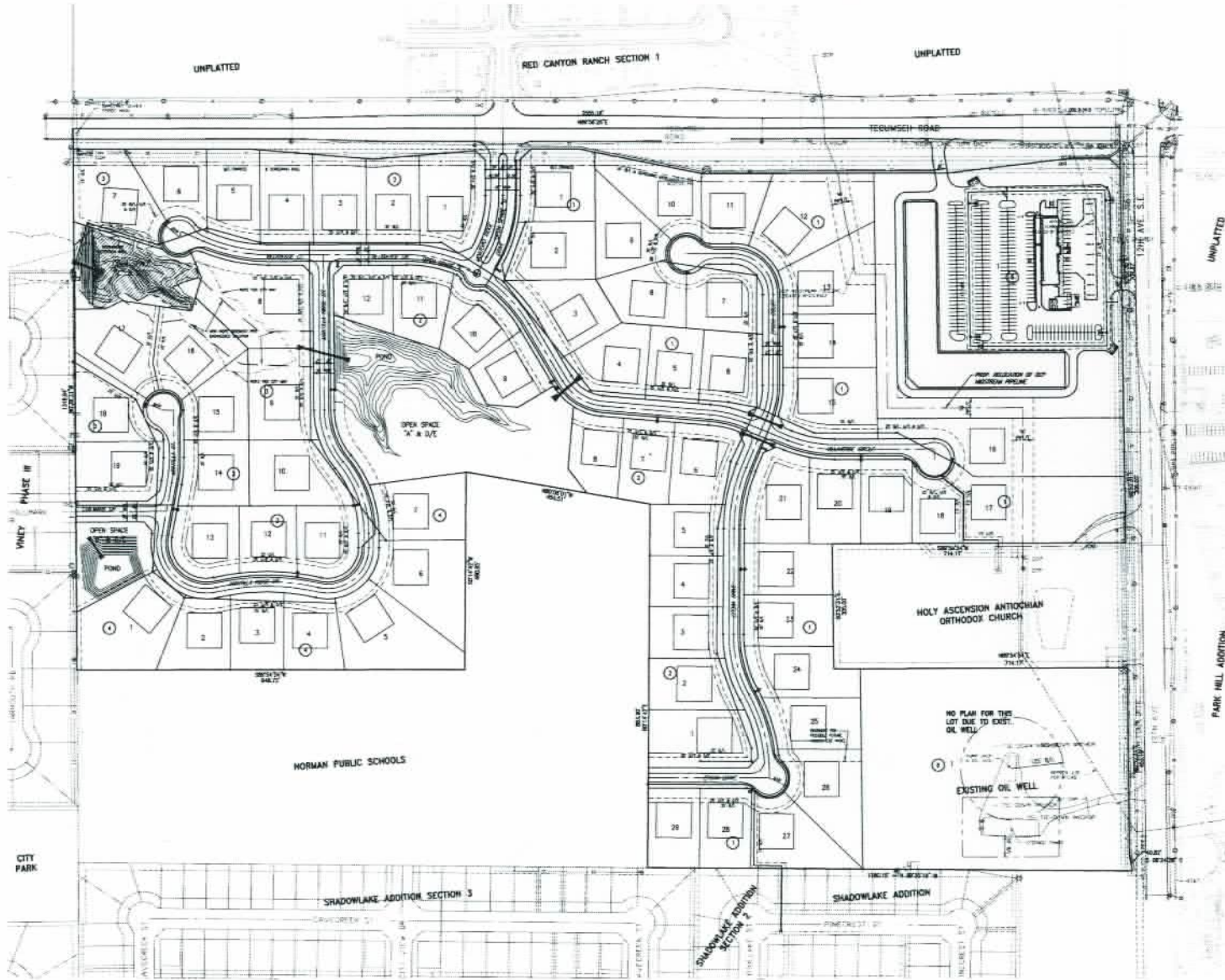


PRELIMINARY SITE DEVELOPMENT PLAN

MONTORO RIDGE

A PLANNED UNIT DEVELOPMENT

A PART OF THE N.E. 1/4, SECTION 17, T9N, R2W, I.M.
NORMAN, CLEVELAND COUNTY, OKLAHOMA



NOTES:
1. MATERIAL AND DIMENSIONS WILL BE LOCATED AND REVISED IN ACCORDANCE WITH THE FINAL PLANS AND THE CITY OF NORMAN COMMENTS AND DISCRETIONING.

2. ALL CONVEYANCES, ETC., TO BE RECORDED IN THE PUBLIC RECORDS OF CLEVELAND COUNTY, OKLAHOMA. PREPARED BY: SMC CONSULTING ENGINEERS, P.C. 1400 N. POSTER AVE. NORMAN, OKLAHOMA 73061. TEL: 342-5852-5853. PREPARED BY: SMC CONSULTING ENGINEERS, P.C. 1400 N. POSTER AVE. NORMAN, OKLAHOMA 73061. TEL: 342-5852-5853.

MONTORO RIDGE
A PLANNED UNIT DEVELOPMENT
TEVUMSEH ROAD & 12th AVE. N.E.
NORMAN, OKLAHOMA

SMC
SMC CONSULTING ENGINEERS, P.C.
1400 N. POSTER AVE.
NORMAN, OKLAHOMA 73061
TEL: 342-5852-5853
FAX: 342-5852-5854
WWW.SMC-OKLAHOMA.COM

PROJECT NO. 2024-01
DATE: 08/20/24
SCALE: 1" = 80'
PROJECT: MONTORO RIDGE
SHEET NO. 1 OF 1
PREPARED BY: J. SMITH
CHECKED BY: J. SMITH
DATE: 08/20/24

PRELIMINARY SITE DEVELOPMENT PLAN