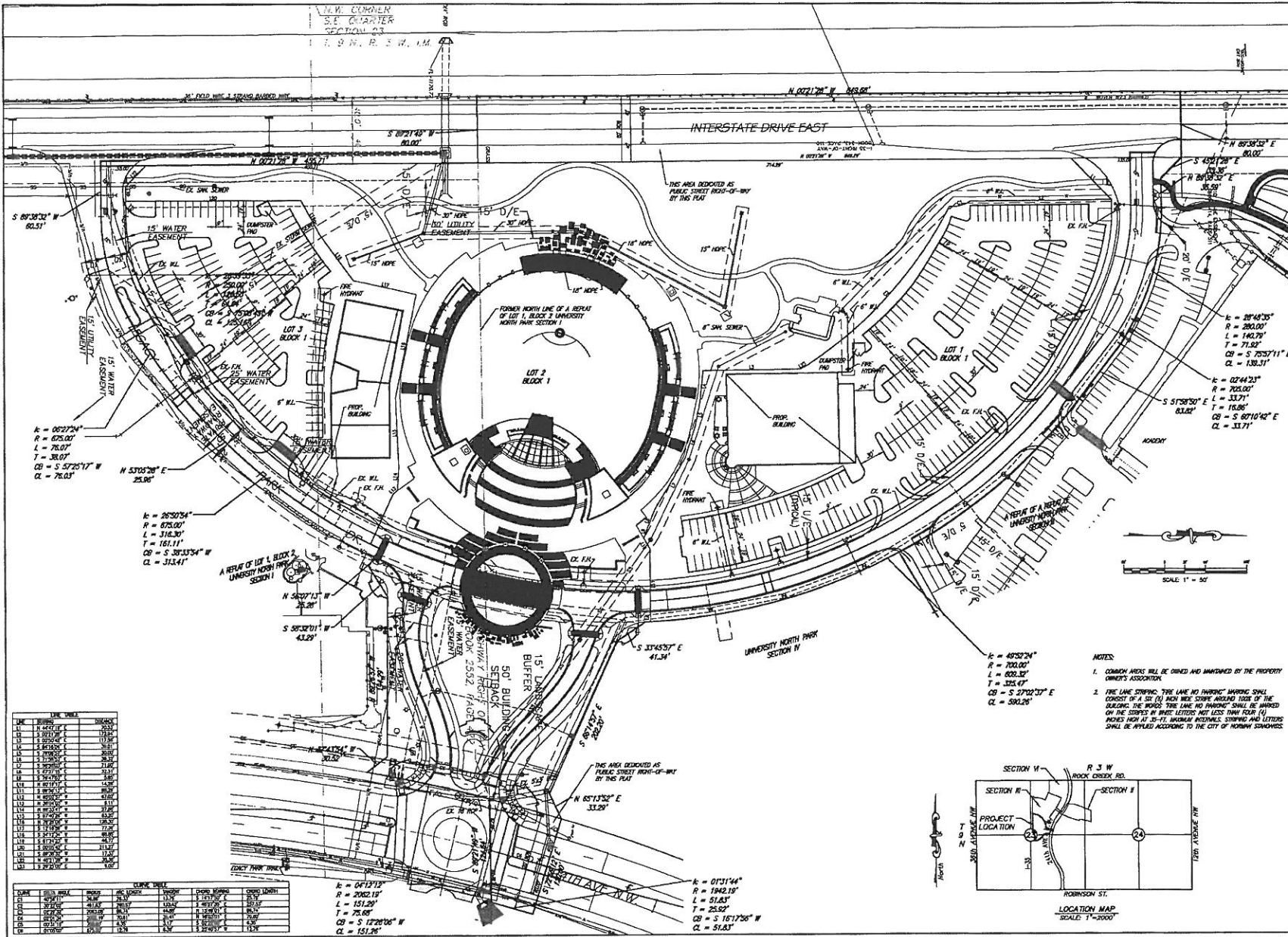


© SMC CONSULTING ENGINEERS, P.C. ALL RIGHTS RESERVED. THESE DOCUMENTS ARE NOT BE LOANED FOR ANY PURPOSES WITHOUT WRITTEN PERMISSION FROM THE CONSULTING ENGINEER, P.C.

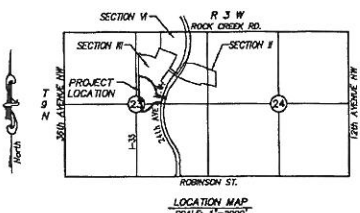


LINE	BEARING	DISTANCE
L1	N 0°21'42" W	80.571'
L2	N 0°21'42" W	179.171'
L3	N 0°21'42" W	179.171'
L4	N 0°21'42" W	179.171'
L5	N 0°21'42" W	179.171'
L6	N 0°21'42" W	179.171'
L7	N 0°21'42" W	179.171'
L8	N 0°21'42" W	179.171'
L9	N 0°21'42" W	179.171'
L10	N 0°21'42" W	179.171'
L11	N 0°21'42" W	179.171'
L12	N 0°21'42" W	179.171'
L13	N 0°21'42" W	179.171'
L14	N 0°21'42" W	179.171'
L15	N 0°21'42" W	179.171'
L16	N 0°21'42" W	179.171'
L17	N 0°21'42" W	179.171'
L18	N 0°21'42" W	179.171'
L19	N 0°21'42" W	179.171'
L20	N 0°21'42" W	179.171'
L21	N 0°21'42" W	179.171'
L22	N 0°21'42" W	179.171'
L23	N 0°21'42" W	179.171'
L24	N 0°21'42" W	179.171'
L25	N 0°21'42" W	179.171'
L26	N 0°21'42" W	179.171'
L27	N 0°21'42" W	179.171'
L28	N 0°21'42" W	179.171'
L29	N 0°21'42" W	179.171'
L30	N 0°21'42" W	179.171'

CURVE	BEG. STA.	END STA.	BEARING	ANGLE	CHORD	CHORD BEARING
CD	0+00.00	0+00.00	N 0°21'42" W	90°	0.00	N 0°21'42" W
CD	0+00.00	0+00.00	N 0°21'42" W	90°	0.00	N 0°21'42" W
CD	0+00.00	0+00.00	N 0°21'42" W	90°	0.00	N 0°21'42" W
CD	0+00.00	0+00.00	N 0°21'42" W	90°	0.00	N 0°21'42" W
CD	0+00.00	0+00.00	N 0°21'42" W	90°	0.00	N 0°21'42" W
CD	0+00.00	0+00.00	N 0°21'42" W	90°	0.00	N 0°21'42" W
CD	0+00.00	0+00.00	N 0°21'42" W	90°	0.00	N 0°21'42" W
CD	0+00.00	0+00.00	N 0°21'42" W	90°	0.00	N 0°21'42" W
CD	0+00.00	0+00.00	N 0°21'42" W	90°	0.00	N 0°21'42" W
CD	0+00.00	0+00.00	N 0°21'42" W	90°	0.00	N 0°21'42" W

$k = 0413'12"$
 $R = 2082.19'$
 $L = 151.29'$
 $T = 75.05'$
 $CB = S 12°26'06" W$
 $CL = 151.29'$

$k = 0151'44"$
 $R = 1942.19'$
 $L = 51.83'$
 $T = 25.52'$
 $CB = S 16°17'08" W$
 $CL = 51.83'$



- NOTES:
1. COMMON AREAS WILL BE OWNED AND MAINTAINED BY THE PROPERTY OWNERS ASSOCIATION.
 2. THE LANE STOPPING, TURN LANE NO PARKING MARKING SHALL CONSIST OF A 24" (6) INCH WIDE STRIP ALONG TOE OF THE BUILDING. THE WORDS 'TURN LANE NO PARKING' SHALL BE PAINTED ON THE SURFACE IN BLOCK LETTERS NOT LESS THAN 6" HIGH (6) INCHES HIGH AT 35-FT. MAXIMUM INTERVALS STOPPING AND LETTERS SHALL BE APPLIED ACCORDING TO THE CITY OF NORMAN STANDARDS.

UNIVERSITY NORTH PARK SECTION II
P.U.D.
INTERSTATE DRIVE & LEGACY PARK
DRIVE
NORMAN, OKLAHOMA

SMC
SMC CONSULTING ENGINEERS, P.C.
1000 N. UNIVERSITY BLVD., SUITE 200
NORMAN, OKLAHOMA 73069
PHONE: (405) 822-1111
FAX: (405) 822-1112
WWW.SMCENGINEERS.COM

PROJECT NO. 19-0002
SHEET NO. 28
DATE: 05/15/2019

FINAL SITE DEVELOPMENT
PLAN
SHEET NO. 28