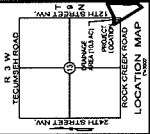


CITY OF NORMAN



LEGEND

(Symbol)	WATER MAIN
(Symbol)	SEWER MAIN
(Symbol)	18" PVC PIPE, SCH. 40
(Symbol)	CONCRETE EXHAUST
(Symbol)	DETERENTION POND
(Symbol)	UNPLANTED
(Symbol)	ASPHALT PARKING
(Symbol)	SEPTIC TANK
(Symbol)	LATERAL FIELD
(Symbol)	BNSF RAILROAD
(Symbol)	ROCK CREEK ROAD
(Symbol)	12th STREET NW
(Symbol)	11th STREET NW
(Symbol)	24th STREET NW
(Symbol)	TECHNICAL ROAD
(Symbol)	ROCK CREEK ROAD
(Symbol)	11th STREET NW
(Symbol)	24th STREET NW
(Symbol)	TECHNICAL ROAD

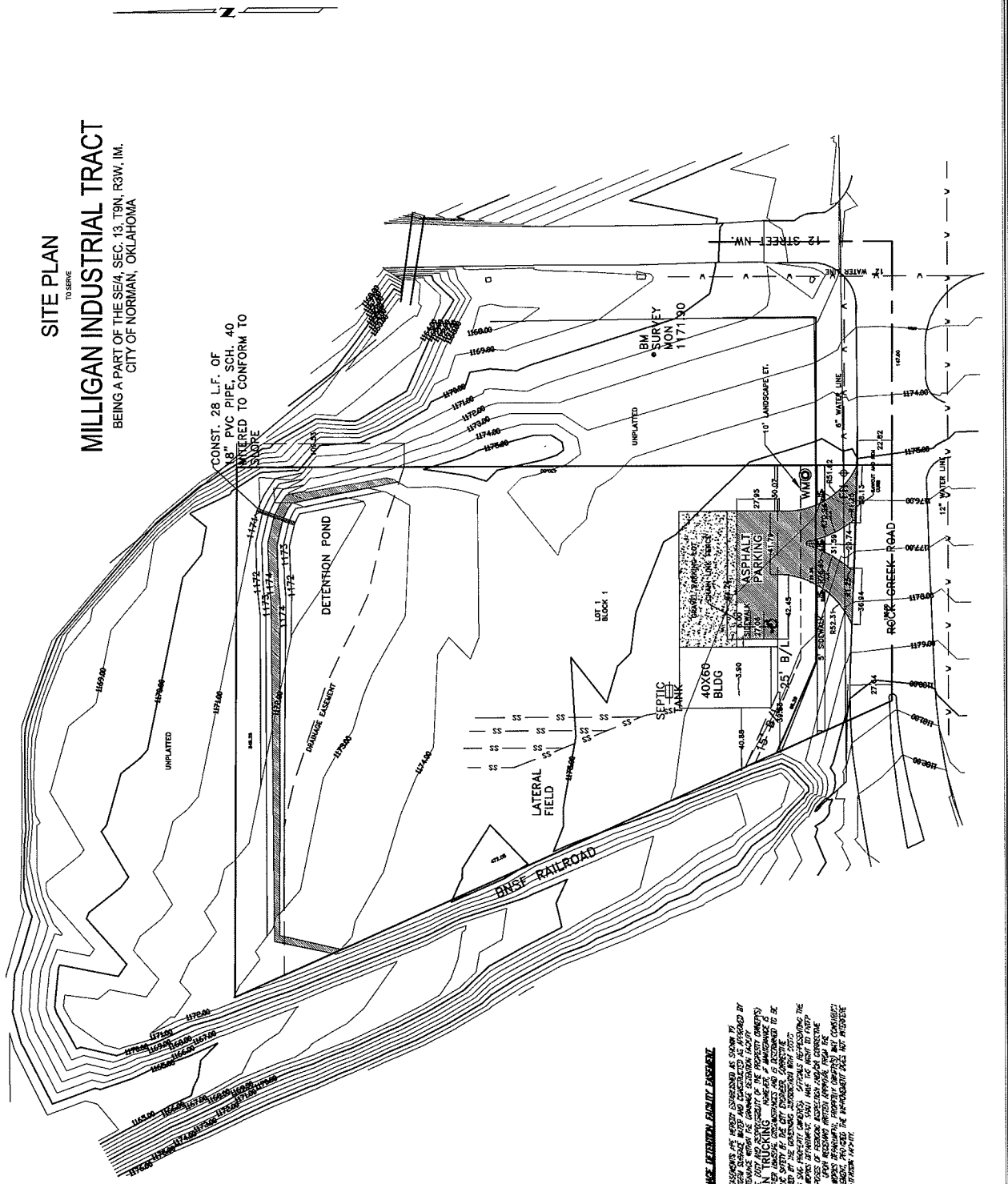
SITE PLAN
 TO SERVE
MILLIGAN INDUSTRIAL TRACT
 BEING A PART OF THE SE/4, SEC. 13, T9N, R3W, IM,
 CITY OF NORMAN, OKLAHOMA

MORRIS
 REGISTERED PROFESSIONAL ENGINEER
 877 NW 27th ST., NORMAN, OKLAHOMA 73101
 (405) 833-1111

DATE: 6-12
 SHEET NO. 3 OF 6

PROPOSED TO SERVE
MILLIGAN INDUSTRIAL TRACT
 SEC. 13, T9N, R3W, IM,
 CITY OF NORMAN, OKLAHOMA

SITE PLAN
 TO SERVE
MILLIGAN INDUSTRIAL TRACT
 BEING A PART OF THE SE/4, SEC. 13, T9N, R3W, IM,
 CITY OF NORMAN, OKLAHOMA



STORM DRAINAGE UTILITIES PRESENT

ADVANCE DRAINAGE FACILITY DESIGNER'S REPORT SUBMITTED TO CITY OF NORMAN BY THE CITY ENGINEER. ALL UTILITIES WITHIN THE DRAINAGE FACILITY ARE TO BE CONSIDERED AS EXISTING UNLESS OTHERWISE NOTED. THE CITY ENGINEER'S REVIEW OF THIS REPORT IS LIMITED TO THE TECHNICAL ASPECTS OF THE DESIGN AND IS NOT A GUARANTEE OF THE ACCURACY OF THE INFORMATION PROVIDED. THE CITY ENGINEER'S REVIEW IS LIMITED TO THE TECHNICAL ASPECTS OF THE DESIGN AND IS NOT A GUARANTEE OF THE ACCURACY OF THE INFORMATION PROVIDED.