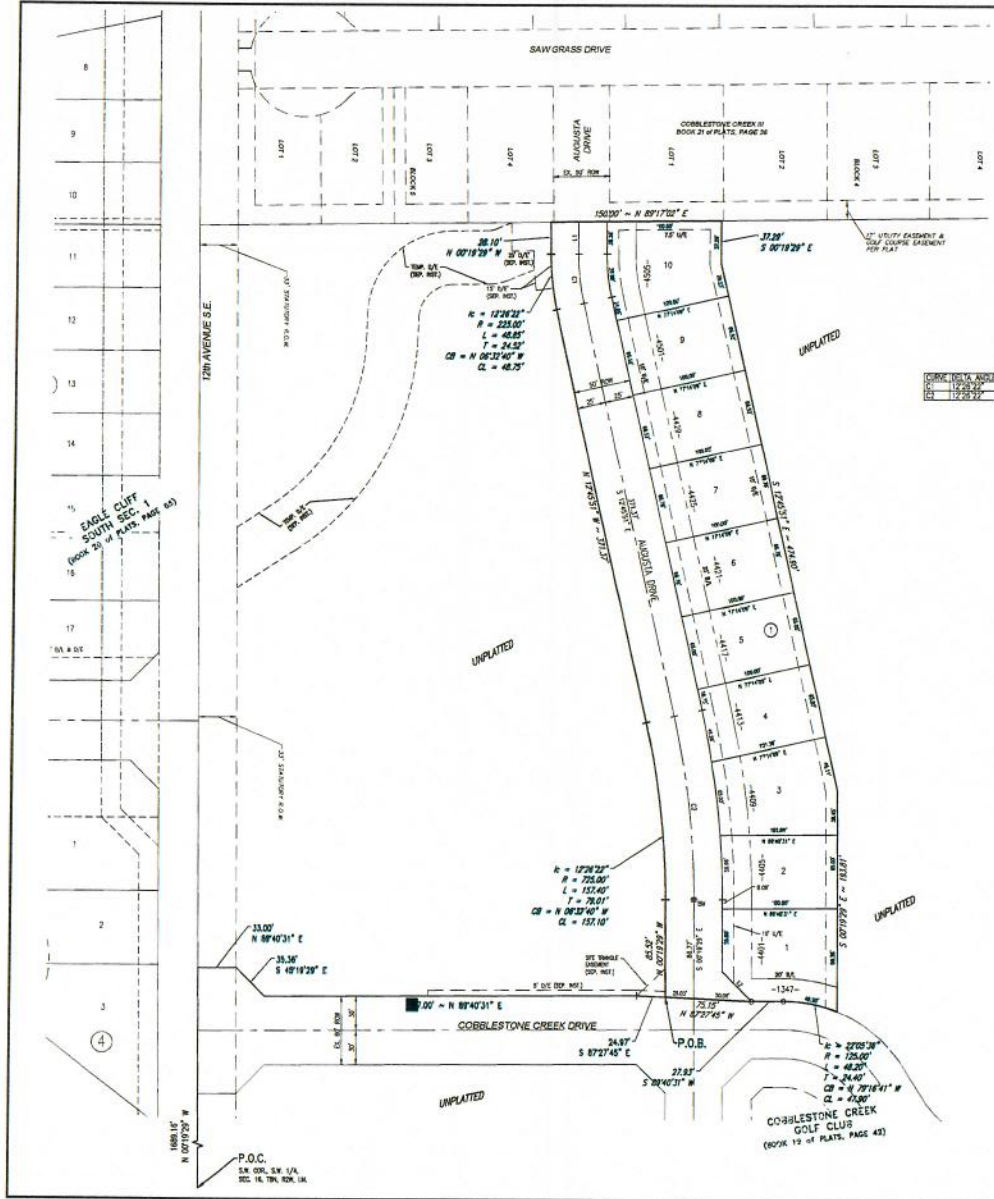


FINAL PLAT
COBBLESTONE CREEK V
 A PART OF THE S.W. OF SECTION 16, T8N, R2W, I.M.
 NORMAN, CLEVELAND COUNTY, OKLAHOMA



CURVE TABLE

CURVE	BEARING	LENGTH	CHORD BEARING	CHORD LENGTH
1	N 00°19'29" W	28.10	S 89°40'31" E	44.54
2	S 07°19'29" E	28.20	N 82°27'45" W	44.54

LINE TABLE

LINE BEARING	LENGTH
1	S 07°19'29" E 28.20
2	S 82°27'45" W 44.54



LEGAL DESCRIPTION

A tract of land lying in the Southwest Quarter of Section 16, Township 8 North, Range 2 West, of the Indian Meridian, Cleveland County, Oklahoma, being more particularly described as follows:

COMMENCING at the southwest corner of said Southwest Quarter;

THENCE North 00°19'29" West along the west line of said Southwest Quarter, a distance of 1609.16 feet;

THENCE North 89°40'31" East a distance of 33.00 feet to a point on the 33.00 foot statutory right-of-way of 12th Ave. S.E., said point being a point on the north right-of-way line of Cobblestone Creek Drive, as shown on the filed first plat of COBBLESTONE CREEK GOLF CLUB (see filed in Book 19 of Plats, Page 43); THENCE along said north right-of-way line the following three (3) courses:

- 1) THENCE South 47°19'29" East a distance of 35.36 feet;
- 2) THENCE North 89°40'31" East a distance of 327.00 feet;
- 3) THENCE South 87°27'45" East a distance of 24.87 feet to the POINT OF BEGINNING;

THENCE North 00°19'29" West a distance of 85.55 feet to a point of curvature; THENCE around a curve to the left having a radius of 225.00 feet (said curve subtended by a chord which bears North 09°52'04" West, a distance of 157.10 feet) and on an arc length of 157.40 feet; THENCE North 12°45'51" West a distance of 371.37 feet to a point of curvature; THENCE around a curve to the right having a radius of 225.00 feet (said curve subtended by a chord which bears North 08°22'40" West, a distance of 48.75 feet) and on an arc length of 48.88 feet; THENCE North 00°19'29" West a distance of 28.10 feet to a point on the South property line of the filed first plat of COBBLESTONE CREEK II (as filed in Book 21 of Plats, Page 36); THENCE North 89°17'02" East along the South line of said South property line a distance of 150.00 feet; THENCE South 07°19'29" East a distance of 37.29 feet; THENCE South 12°45'51" East a distance of 474.80 feet; THENCE South 00°19'29" East a distance of 183.81 feet to a point on a non-tangent curve, said point also being a point on the North right-of-way line of said Cobblestone Creek Drive; THENCE along said North right-of-way line the following three (3) courses:

- 1) THENCE around a curve to the left having a radius of 125.00 feet (said curve subtended by a chord which bears North 79°16'41" West, a distance of 47.80 feet) and on an arc length of 48.20 feet;
- 2) THENCE South 89°40'31" West a distance of 27.83 feet;
- 3) THENCE North 87°27'45" West a distance of 75.15 feet to the POINT OF BEGINNING.

Said tract contains 104,851 square feet, or 2,402 acres, more or less.

- NOTES:**
1. BENCHMARKS SHOWN HEREON ARE BASED ON THE RECORD OF N 00°19'29" W FOR THE WEST LINE OF SECTION 16.
 2. EASEMENTS SHOWN HEREON BY SPECIFIC RECORDING INFORMATION ARE SHOWN FOR REFERENCE PURPOSES ONLY AND ARE NOT DEDICATED PURSUANT TO THIS FINAL PLAT.
 3. UNLESS NOTED OTHERWISE, THE UNIT OF MEASUREMENT SHOWN FOR ALL DIMENSIONS ON THE FINAL PLAT IS FEET.

LONA = LIMITS OF NO ACCESS
 A/E = ACCESS EASEMENT
 D/E = DRAINAGE EASEMENT
 U/E = UTILITY EASEMENT
 P/E/E = PROFESSIONAL EASEMENT
 B/L = BUILDING LINE
 -1000- = ADDRESS

BENCHMARKS:
 SITE BENCHMARK # 1, SET BRASS CHP @ P.C. OF AUGUSTA DRIVE.
 ELEVATION =

Date: July 19, 2017
 SMC CONSULTING ENGINEERS, P.C.
 815 N. Main Street
 Oklahoma City, OK 73106
 PH: (405)332-7715
 Oklahoma C.A.B.A.#4 Exp. 6-30-2019
 COBBLESTONE CREEK V
 FINAL PLAT SHEET 2 of 2