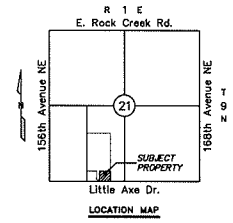
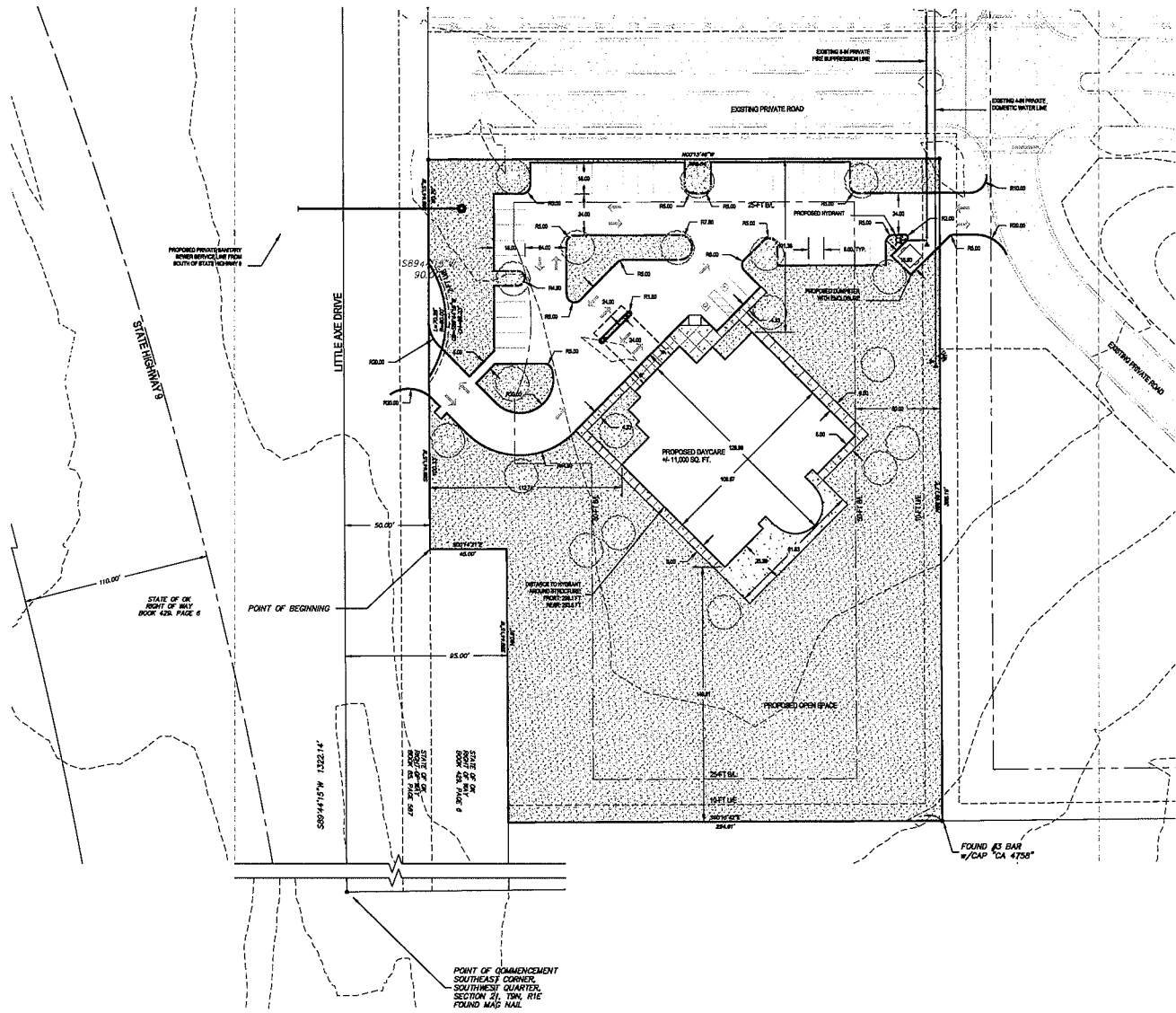


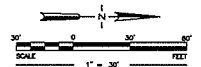
SITE PLAN FOR

ABSENTEE SHAWNEE HEALTH CENTER, SECTION 2

THE E/2 OF THE SW/4, SECTION 21, TOWNSHIP 9 NORTH, RANGE 1 EAST OF THE I.M.
NORMAN, CLEVELAND COUNTY, OKLAHOMA



- NOTES
1. PRIVATE WATER AND SEWER SYSTEMS TO COMPLY WITH OED "P&L/C" REQUIREMENTS AND APPLICABLE RULES.
 2. FIRE FLOW DATA FOR THE BUILDING LOCATION HAS BEEN REQUESTED BY CITY OF NORMAN FIRE MARSHAL. A HYDRANT FLOW TEST SHALL BE COORDINATED.
 3. THE CITY OF NORMAN FIRE MARSHAL'S REQUIREMENT FOR FACILE COVERAGE HAS BEEN MET (LESS THAN 200-FT TO HYDRANT).



REVISIONS

No.	Description	Date

PREPARED BY

DESIGNED BY

DRAWN BY

CHECKED BY

DATE

SCALE

REVIEW

PROJECT

Absentee Shawnee Health Center, Section 2

LOCATION

Little Axe Drive
Norman, Oklahoma

PREPARED BY

Trinity Group Architects and
Absentee Shawnee Tribe of Oklahoma

DRAWN BY

FINAL PLAT - SITE PLAN

Project No. 08077.05

Drawn By JNC

Checked By JRC

Date 11.08.2012

Scale AS SHOWN

Reviewed BY REVIEW

B

CARDINAL ENGINEERING

1018 N. Broadway Ave., Suite 200
Oklahoma City, OK 73102
Phone 405.842.1000
Fax 405.843.4687

3224 Burt Cooper Drive
Norman, OK 73072
Phone 405.579.2655
Fax 405.366.8540

http://www.cardinalengineering.com
C#8 2004, expiration date 01.30.2013