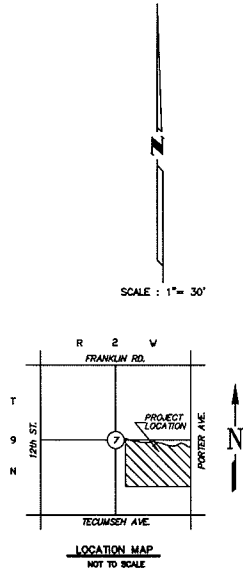
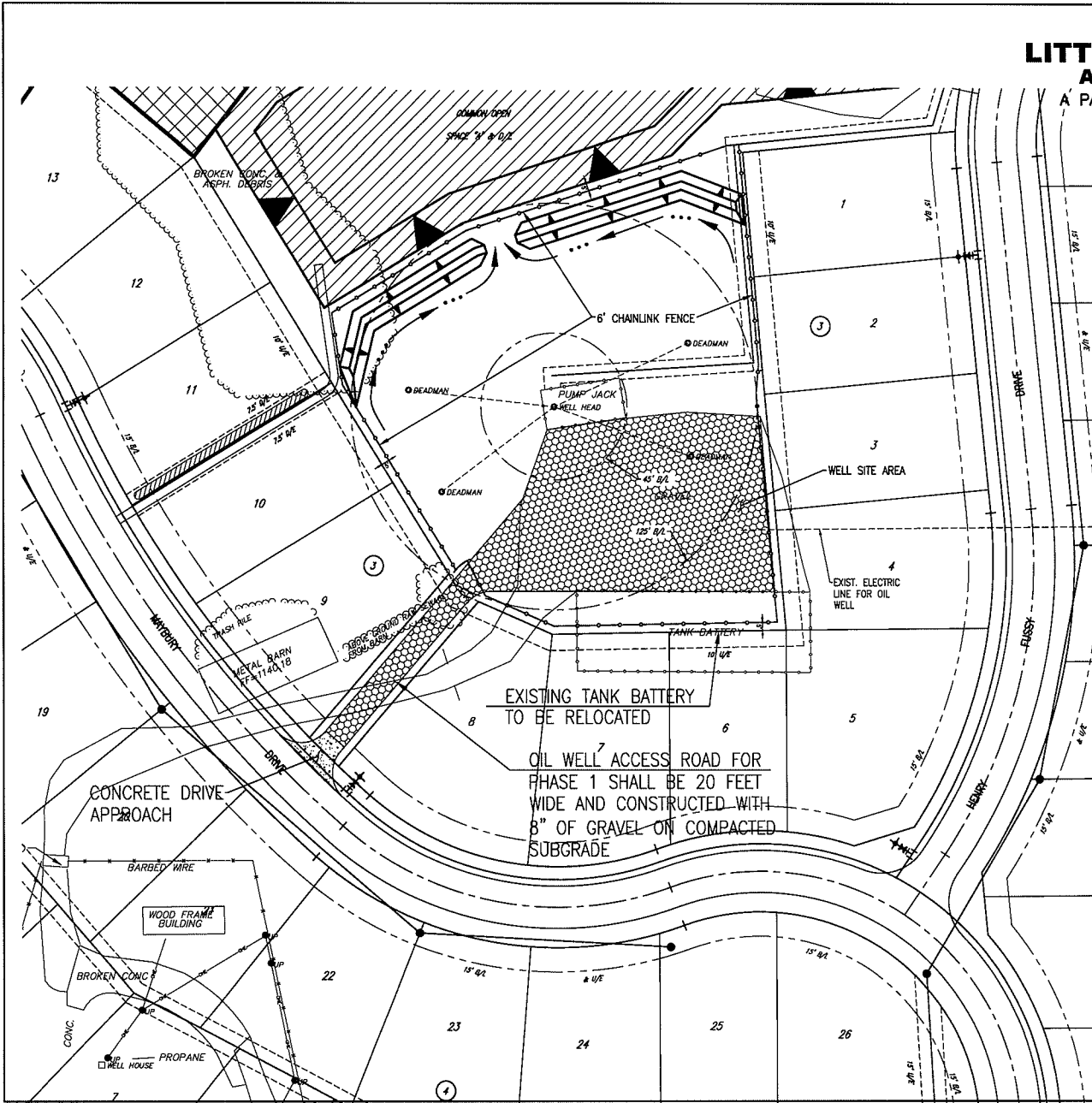


# WELL SITE PLAN LITTLE RIVER TRAILS ADDITION A PLANNED UNIT DEVELOPMENT

A PART OF THE E. 1/2, SECTION 7, T9N, R2W, I.M.  
NORMAN, CLEVELAND COUNTY, OKLAHOMA



MODIFICATION OF EXISTING WELL SITE, INCLUDING RELOCATION OF TANK BATTERY AND FLOW-LINE, ELECTRIC LINES, CONSTRUCTION OF APPROACHES, LEASE ROAD, AND FENCING, WILL BE PERFORMED BY THE DEVELOPER. FINAL MODIFICATION WILL BE DETERMINED WITH FINAL PLAN.

© SMC CONSULTING ENGINEERS, P.C. ALL RIGHTS RESERVED. THESE DRAWINGS ARE NOT BE USED FOR ANY PURPOSES WITHOUT THE WRITTEN PERMISSION OF SMC CONSULTING ENGINEERS, P.C.

LITTLE RIVER TRAILS ADDITION  
PORTER AVE. & TECUMSEH ROAD  
NORMAN, OKLAHOMA

**SMC**  
SMC Consulting Engineers, P.C.  
1400 N. UNIVERSITY  
NORMAN, OKLAHOMA 73069  
PHONE: (405) 771-7777 FAX: (405) 771-7788  
WWW.SMCENGINEERS.COM

PROJECT NO. 164840  
DATE: 04/24/12  
SCALE: 1" = 30'  
SHEET NO. 1  
DRAWN: CHRISTOPHER D. ANDERSON  
P.E. NUMBER: P.E. #1008

WELL SITE PLAN  
SHEET NO. 1