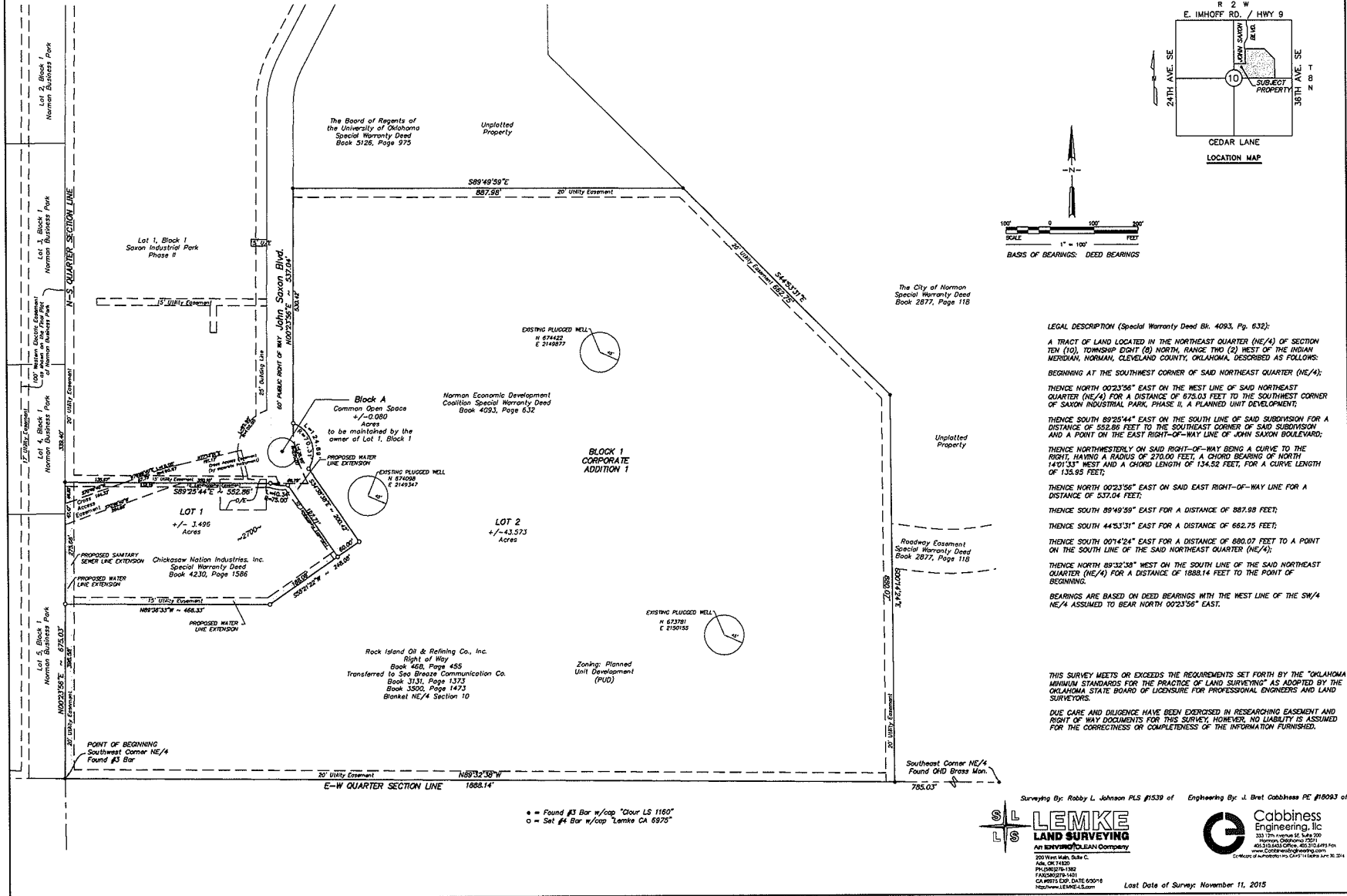


PRELIMINARY PLAT CORPORATE ADDITION 1

A Planned Unit Development
A PART OF THE NE/4, SECTION TEN, T8N, R2W OF THE I. M.,
NORMAN, CLEVELAND COUNTY, OKLAHOMA



THE MCKINNEY PARTNERSHIP
ARCHITECTS

3600 West Main
Suite 200
Norman, Oklahoma
73072
405.360.1400 p
405.364.8387 f
Imparch.com

Seal:

10/05/2015

Project:

**Chickasaw Nation
Industries
Proposed Office Building**
2700 JOHN SAXON BLVD.
NORMAN, OKLAHOMA

Issue Date:
01/04/2016

Revisions:

Project Number:
CM072215

Sheet Title:
PRELIMINARY PLAT

Sheet Number:
PP 1