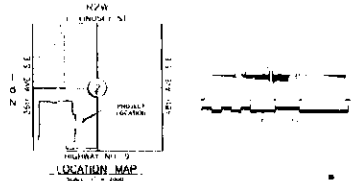


PRELIMINARY PLAT
BELLATONA ADDITION
 A PART OF THE S.W. 1/4 AND THE N.W. 1/4 OF
 SECTION 2, T8N, R2W, 14M.
 NORMAN, CLEVELAND COUNTY, OKLAHOMA

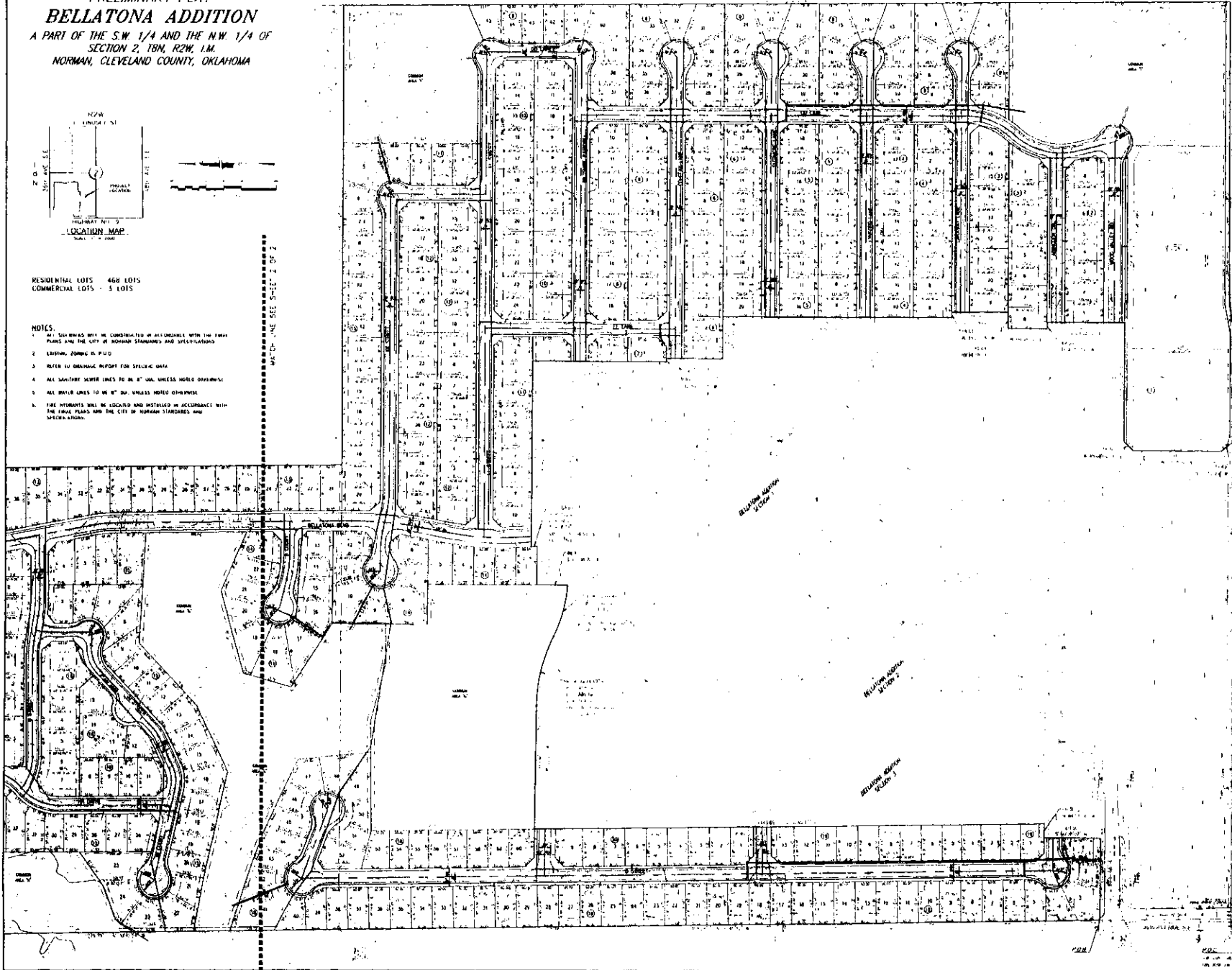


RESIDENTIAL LOTS - 468 LOTS
 COMMERCIAL LOTS - 3 LOTS

NOTES:

1. ALL UTILITIES WILL BE CONSTRUCTED IN ACCORDANCE WITH THE FINAL PLANS AND THE CITY OF NORMAN STANDARDS AND SPECIFICATIONS.
2. EXISTING ZONING IS P-10.
3. REFER TO ORIGINAL REPORT FOR SPECIFIC DATA.
4. ALL SANITARY SEWER LINES TO BE 8" DIA. UNLESS NOTED OTHERWISE.
5. ALL WATER LINES TO BE 8" DIA. UNLESS NOTED OTHERWISE.
6. FIRE HYDRANTS WILL BE LOCATED AND INSTALLED IN ACCORDANCE WITH THE FINAL PLANS AND THE CITY OF NORMAN STANDARDS AND SPECIFICATIONS.

MATCH LINE SEE SHEET 2 OF 2



OWNER / DEVELOPER
 BELLATONA DEVELOPMENT, LLC
 1111 W. UNIVERSITY BLVD.
 SUITE 100
 NORMAN, OK 73069

ENGINEER
 SMC CONSULTING ENGINEERS, P.C.
 215 S. MAIN ST.
 SUITE 100
 NORMAN, OK 73069



BELLATONA ADDITION
 STATE HWY. 9 & 36TH AVE. S.E.
 NORMAN, OKLAHOMA

SMC
 CONSULTING ENGINEERS, P.C.
 215 S. MAIN ST., SUITE 100
 NORMAN, OKLAHOMA 73069
 LICENSE NO. 10000

PROJECT NO. 24872
 DATE: 11/14/14
 SHEET NO. 1 OF 2
 PRELIMINARY PLAT
 1 of 2

