

**PRELIMINARY PLAT
TRAILWOODS WEST
A PART OF THE S.W. 1/4 OF SECTION 18, 19N, R2W, I.M.
NORMAN, CLEVELAND COUNTY, OKLAHOMA**

LEGAL DESCRIPTION

A part of said plat in the Southern Quarter (SW1/4) of Section 18, Township 19N, Range 2W, I.M. Norman, Cleveland County, Oklahoma and being more particularly described as follows:

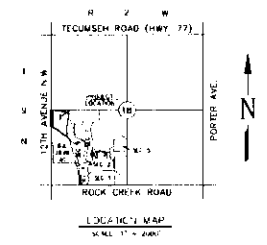
COMMENCE at the Northwest corner of said SW1/4, THENCE North 00°27'40" East along the West line of said SW1/4 a distance of 200.00 feet to the POINT OF BEGINNING;

THENCE continuing North 00°27'40" East a distance of 577.88 feet to the Northeast corner of said SW1/4, THENCE South 89°52'20" West along and north line a distance of 146.50 feet, THENCE South 00°27'40" East a distance of 200.00 feet, THENCE South 00°27'40" East a distance of 146.50 feet, THENCE South 89°52'20" West along and north line a distance of 146.50 feet, THENCE North 00°27'40" East a distance of 577.88 feet to the POINT OF BEGINNING.

THENCE continuing North 00°27'40" East a distance of 577.88 feet to the Northeast corner of said SW1/4, THENCE South 89°52'20" West along and north line a distance of 146.50 feet, THENCE South 00°27'40" East a distance of 200.00 feet, THENCE South 00°27'40" East a distance of 146.50 feet, THENCE South 89°52'20" West along and north line a distance of 146.50 feet, THENCE North 00°27'40" East a distance of 577.88 feet to the POINT OF BEGINNING.

Area: 200.00 Acres ±

See also plat containing SW1/4 SW1/4 Section 18, I.M. 19N, 2W, I.M. Norman, Cleveland County, Oklahoma.



- NOTES:**
- EXISTING ZONING IS P-1
 - ALL PUBLIC UTILITIES SHALL BE DESIGNED IN ACCORDANCE WITH THE CITY OF NORMAN STANDARDS
 - ALL STREETS SHALL BE DESIGNED IN ACCORDANCE WITH THE CITY OF NORMAN STANDARDS
 - ALL PUBLIC UTILITIES SHALL BE IN DELEGATED FACILITIES
 - ALL SANITARY SEWER LINES TO BE 8" DIA. UNLESS NOTED OTHERWISE
 - WATER LINES TO BE 6" DIA. UNLESS NOTED OTHERWISE. WATER LINE SIZES MAY NEED TO BE INCREASED BASED ON FINISH OF PROJECT
 - THE HYDRAULICS TO BE CHECKED WITHIN A PERIOD OF 300 HOURS
 - ALL UTILITY MAINTENANCE AREAS SHALL BE MAINTAINED BY THE CITY OF NORMAN AND ALL COMMON AREAS WITHIN THIS DEVELOPMENT SHALL BE MAINTAINED BY THE PROPERTY OWNER'S ASSOCIATION OF TRAILWOODS WEST
 - REFER TO DRAINAGE REPORT FOR DRAINAGE INFORMATION
 - ALL UTILITIES SHALL BE CONSTRUCTED IN ACCORDANCE WITH THE FINAL PLANS AND THE CITY OF NORMAN STANDARDS AND SPECIFICATIONS

© 2010 CLEVELAND COUNTY, P.C. ALL RIGHTS RESERVED. THIS DOCUMENT IS NOT TO BE REPRODUCED OR TRANSMITTED IN ANY FORM OR BY ANY MEANS, ELECTRONIC OR MECHANICAL, INCLUDING PHOTOCOPYING, RECORDING, OR BY ANY INFORMATION STORAGE AND RETRIEVAL SYSTEM.

OWNER / DEVELOPER
JOHN W. WILSON, LLC
 1221 WEST AVENUE
 NORMAN, OK 73071
 (405) 833-1122

PREPARED BY
SMC CONSULTING ENGINEERS, P.C.
 215 S. MAIN ST.
 NORMAN, OK 73071
 (405) 833-1122

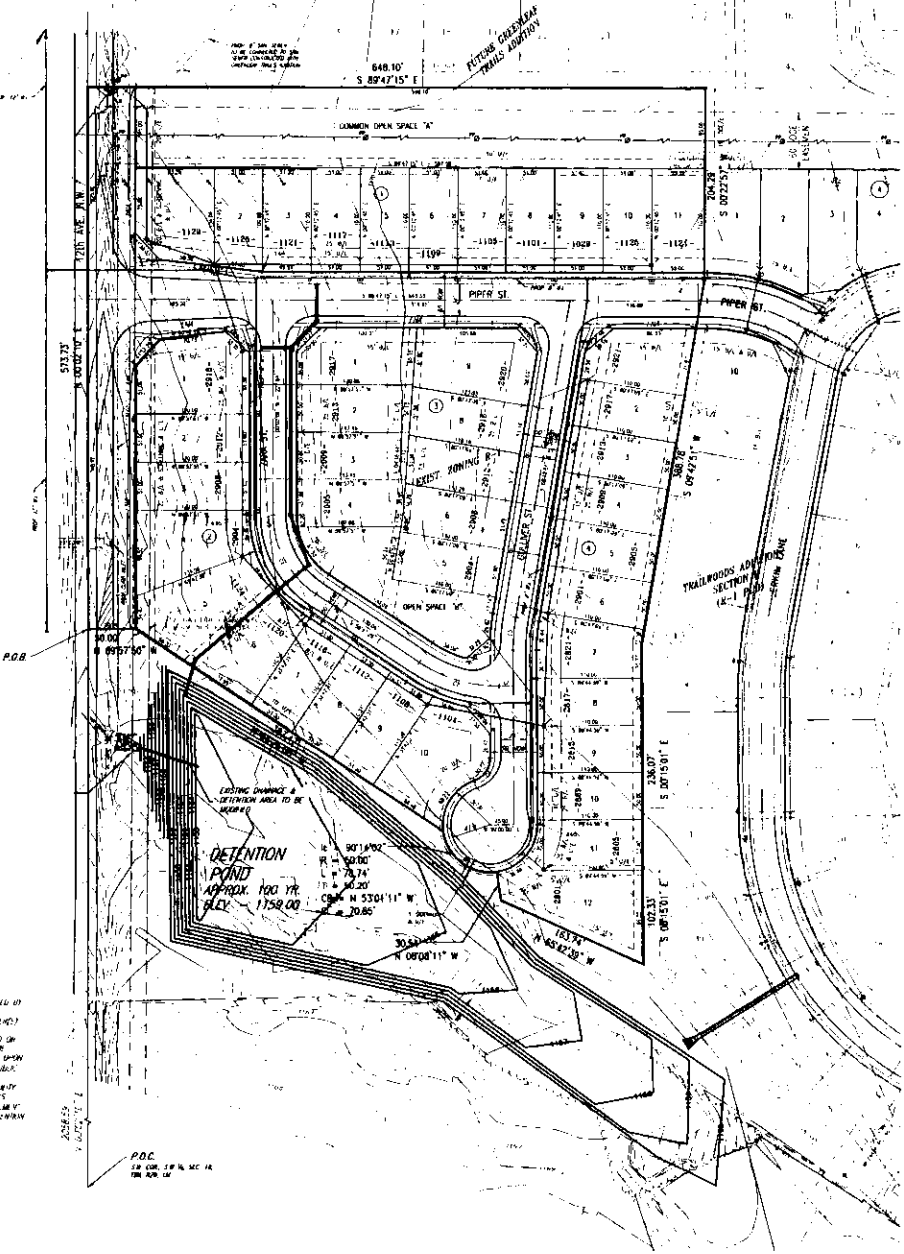


TRAILWOODS WEST
 1221 WEST AVENUE, N.W. & ROCK CREEK ROAD,
 NORMAN, OKLAHOMA

SMC
 SMC CONSULTING ENGINEERS, P.C.
 215 S. MAIN ST.
 NORMAN, OK 73071
 (405) 833-1122
 www.smccoe.com

PROJECT NO. 21010
 DATE: 05/18/10
 SCALE: 1" = 40'
 DRAWN BY: JWC
 CHECKED BY: JWC
 P.L. NUMBER: 1000

Preliminary Plat



STORM DRAINAGE DETENTION FACILITY FACSIMILE

STORM DRAINAGE DETENTION FACILITIES ARE HEREBY ESTABLISHED AS SHOWN TO PROVIDE FOR COLLECTION OF STORM SURFACE WATER AND CONSTRUCTION AS APPROVED BY THE CITY ENGINEER. THE MAINTENANCE, REPAIR AND REPAIRS TO BE MADE TO SUCH FACILITIES SHALL BE THE RESPONSIBILITY OF THE PROPERTY OWNER(S) OF THE PLAT OF TRAILWOODS WEST. MAINTENANCE IS REQUIRED AND SUBJECT TO OTHER APPLICABLE ORDINANCES, AND IS DETERMINED TO BE A MAJOR THREAT TO PUBLIC SAFETY BY THE CITY ENGINEER. CONSTRUCTION MAINTENANCE MAY BE PERFORMED BY THE FOLLOWING INDIVIDUALS WHOSE NAMES ARE LISTED ON THIS PLAT: JOHN WILSON, LLC, 1221 WEST AVENUE, NORMAN, OK 73071. ANY OTHER INDIVIDUALS REPRESENTING THE ENGINEERING DESIGN FIRM, WORKS DEPARTMENT, SHALL HAVE THE RIGHT TO ENTER UPON THE PLAT FOR THE PURPOSES OF PERFORMING MAINTENANCE AND/OR CONSTRUCTION OF THE FACILITY WITHIN 15 DAYS AFTER THE CITY ENGINEER HAS PROVIDED WRITTEN NOTICE FROM THE ENGINEERING DESIGN FIRM. THE CITY ENGINEER'S OFFICE MAY CONDUCT INSPECTIONS WITHIN 72 HOURS AFTER THE APPROVAL DATE AND MAINTENANCE WITH THE FACILITY.

CONTRACT NO. 1000
 1221 WEST AVENUE, NORMAN, OK 73071