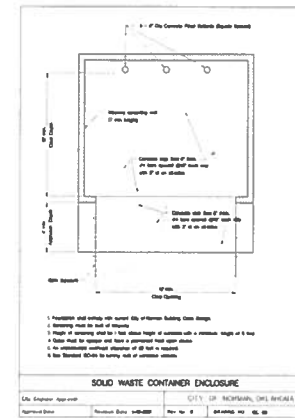
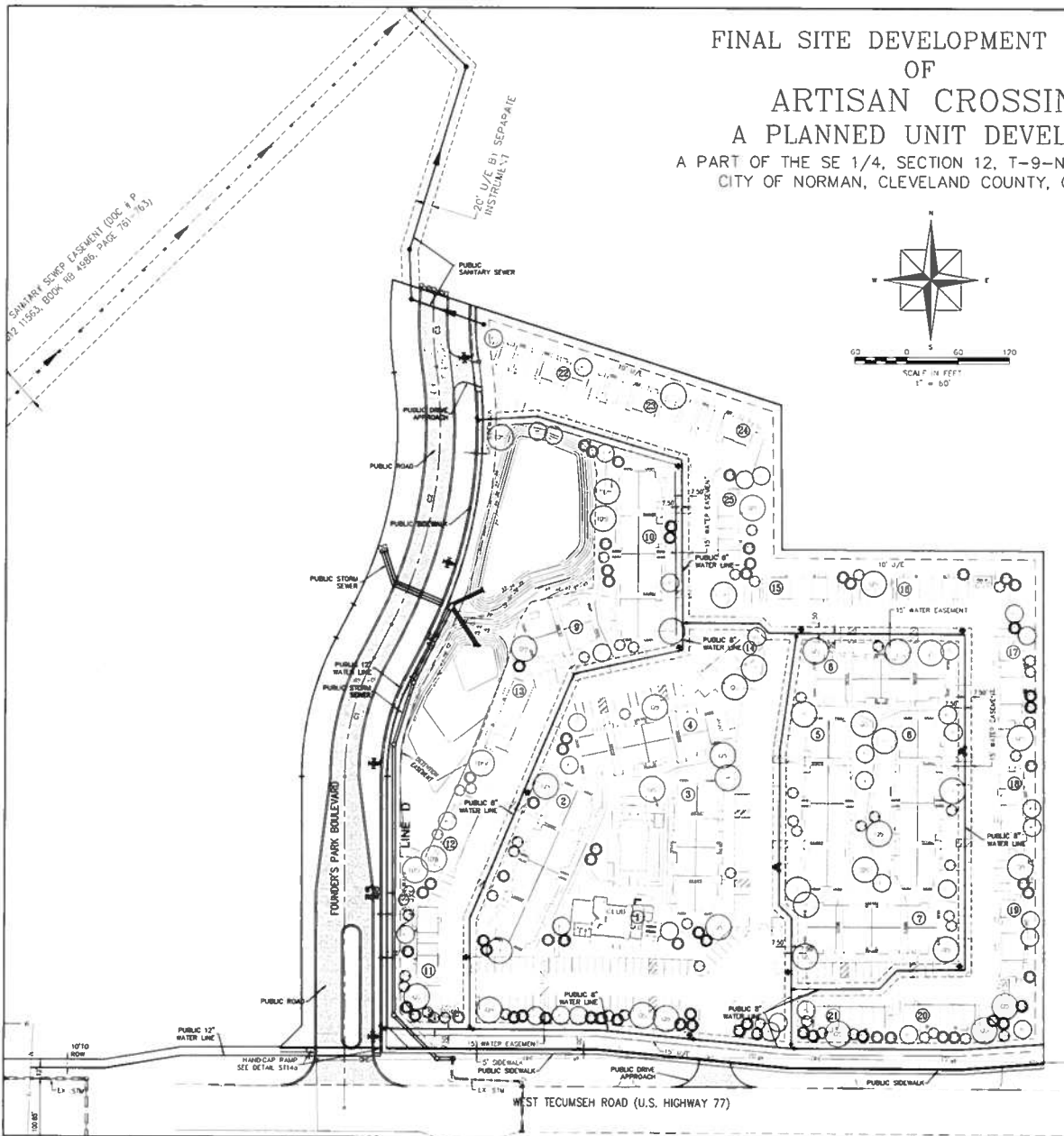
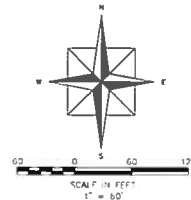
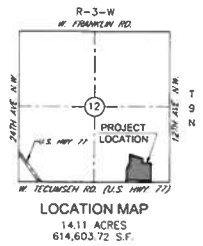


FINAL SITE DEVELOPMENT PLAN
 OF
ARTISAN CROSSING
 A PLANNED UNIT DEVELOPMENT
 A PART OF THE SE 1/4, SECTION 12, T-9-N, R-3-W, 1.M.
 CITY OF NORMAN, CLEVELAND COUNTY, OKLAHOMA



LANDSCAPE MATERIAL LIST

KEY	QUANTITY	DESCRIPTION	SYMBOL	TYPE
CC-2	32	Seto's 6-8" (various) - 6" (various)	6-8"	640
MC	24	3" (various) - 3" (various)	3"	240
W-1	81	Wedge of 1/2" - 1/2" (various)	1/2"	300
GS	29	Grass (various)	Grass	240
TD-1	1	1" (various) - 1" (various)	1"	240
W-2	3	Wedge of 1/2" - 1/2" (various)	1/2"	240

OWNER
ARTISAN CROSSING HOLDING LLC
 4200 E SKELLY DRIVE, SUITE 800
 TULSA, OK 74135
 PHONE: (918) 492-1983

ENGINEER/SURVEYOR
TUTTLE & ASSOCIATES, INC.
 P.O. BOX 471313
 TULSA, OKLAHOMA 74147-1313
 PHONE: (918) 663-5567
 CERTIFICATE OF AUTHORITY CA 465
 EXPIRATION 6-30-21



SITE PLAN
PRIVATE ONSITE ARTISAN CROSSING
CITY OF NORMAN, OKLAHOMA

PLANS & ESTIMATES PREPARED BY:
TUTTLE & ASSOCIATES, INC.

P.O. Box 471313
 TULSA, OK 74147
 918.663.5567

BY	DATE	APPROVED
DESIGNED BY: J. TUTTLE		
DRAWN: 5076 SITE PLAN		
RECOMMENDED:		
ENGINEER'S SERVICES:		
RECOMMENDED:		
ENGINEERING SERVICES:		
RECOMMENDED:		
FILE DRAWING		DATE
ATLAS PAGE NO.		SHEET 1 OF 1 SHEETS