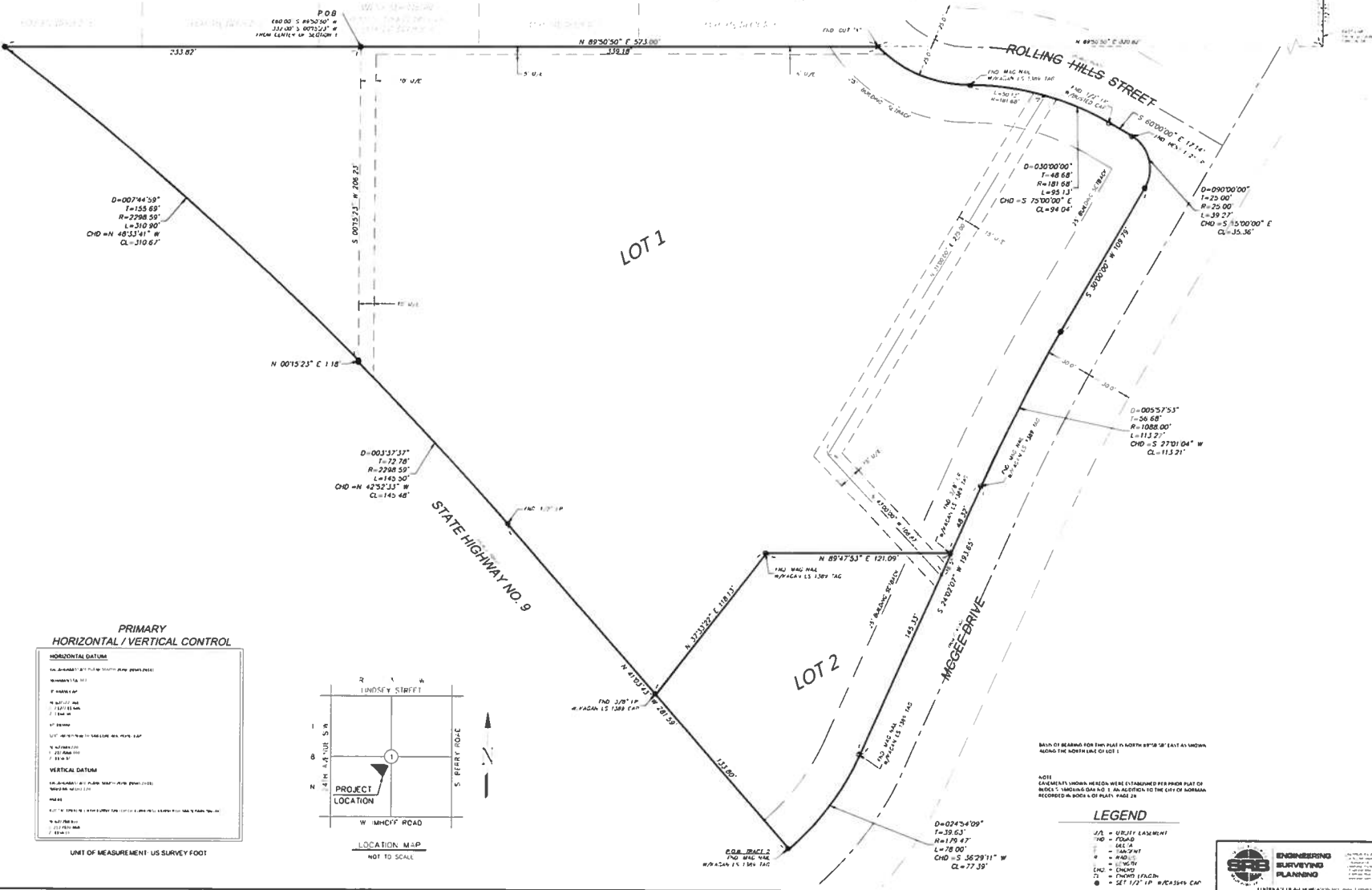


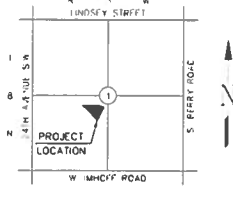
Final Plat of HIPOINT OFFICE COMPLEX

A RE-PLAT OF BLOCK 5 SMOKING OAK NO. 1,
AN ADDITION TO THE CITY OF NORMAN, CLEVELAND COUNTY, OKLAHOMA
BEING A PART OF THE SOUTH HALF OF SECTION 1, T8N, R3W, OF THE INDIAN MERIDIAN



**PRIMARY
HORIZONTAL / VERTICAL CONTROL**

HORIZONTAL DATUM	
ADJ. ADJUSTED BY PLATON (STATION AND POINTS)	
WADSWORTH 1943	
F. WADSWORTH	
N. WADSWORTH	
F. WADSWORTH	
1943	
VERTICAL DATUM	
ADJ. ADJUSTED BY PLATON (STATION AND POINTS)	
WADSWORTH 1943	
F. WADSWORTH	
N. WADSWORTH	
F. WADSWORTH	
1943	



UNIT OF MEASUREMENT - US SURVEY FOOT

LOCATION, M.A.P.
NOT TO SCALE

BOUNDARY BEARING FOR THIS PLAT IS NORTH 89°18'30" EAST AS SHOWN ALONG THE NORTH LINE OF LOT 1

AGEE ENCUMBRANCES SHOWN HEREON WERE ESTABLISHED BY PRIOR PLAT OF BLOCK 5 - SMOKING OAK NO. 1, AN ADDITION TO THE CITY OF NORMAN, RECORDED IN BOOK 4 OF PLATS, PAGE 28.

LEGEND

- JA = SURVEY ENCUMBRANCE
- ND = ROAD
- MA = MAG. N.W.
- 1/4 = 1/4 AC
- 1/2 = 1/2 AC
- CHD = CHANGING CURVE
- TS = TRANSIT STATION
- = SET 1/2" I.P. W/ 3/4" 3/4" CAP

**ENGINEERING
SURVEYING
PLANNING**

1111 N. W. 10th St., Suite 100, Norman, OK 73069
Tel: 405.326.1111 Fax: 405.326.1112
www.sps-engineering.com