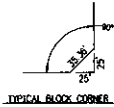
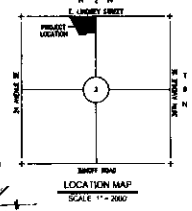
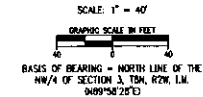


LINE #	LENGTH	DIRECTION
L1	10.00'	N80° 01' 32" W
L2	28.90'	S00° 01' 32" E
L3	28.90'	S00° 01' 32" E
L4	36.79'	S47° 21' 27" E
L5	36.79'	N47° 21' 27" E
L6	35.77'	S47° 22' 42" W
L7	35.36'	S46° 01' 32" E
L8	36.36'	S47° 58' 28" W
L9	36.36'	S46° 01' 32" E

CURVE #	LENGTH	RADIUS	DELTA	CHORD DIRECTION	CHORD LENGTH
C1	235.26'	54.00'	249° 36' 56"	S34° 20' 05" E	88.06'
C2	42.52'	35.00'	089° 36' 57"	S35° 10' 20" W	30.90'
C3	235.26'	54.00'	249° 36' 57"	S34° 50' 00" E	88.06'
C4	42.52'	35.00'	089° 36' 57"	S35° 10' 20" W	30.90'



FINAL SITE DEVELOPMENT PLAN
OF
TURTLE CROSSING
A PLANNED UNIT DEVELOPMENT
A Part of the NW/4 of Section 3, T8N, R2W, L1M.
Norman, Cleveland County, Oklahoma

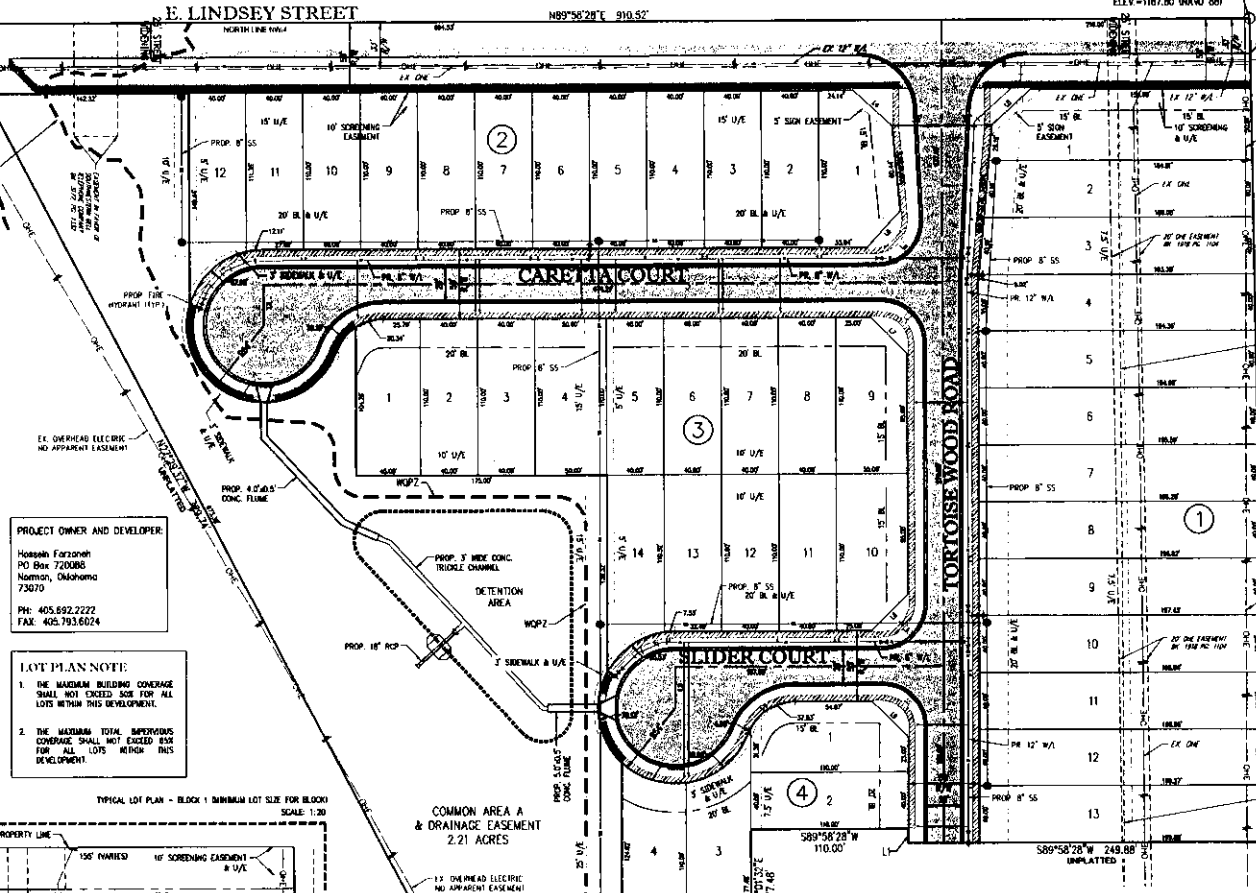
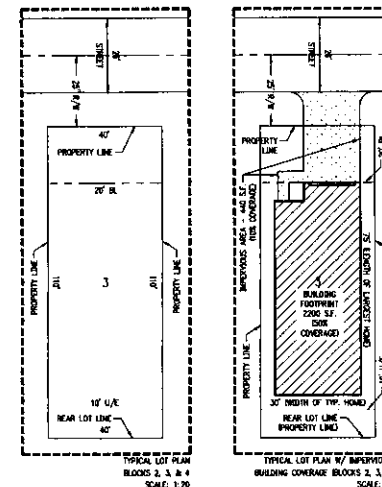


LEGAL DESCRIPTION

A tract of land situated within the Northeast Quarter (NE/4) of Section Three (3), Township Eight North (T8N), Range Two West (R2W) of the Indian Meridian (I.M.), Cleveland County, Oklahoma, being more particularly described by metes and bounds as follows:

BEGINNING at the Northeast corner NW/4; thence S00°54'11"E along the East line of said NW/4 a distance of 580.07 feet; thence S89°58'28"W a distance of 248.88 feet; thence N00°01'32"W a distance of 10.00 feet; thence S00°58'28"W a distance of 110.00 feet; thence S00°01'32"E a distance of 77.48 feet; thence S89°58'28"W a distance of 223.63 feet; thence N07°28'37"W a distance of 728.74 feet; thence N89°58'28"E a distance of 910.52 feet to the POINT OF BEGINNING.

Said tract contains 450,384.54 Ft or 10.92 Acres, more or less.



PROJECT OWNER AND DEVELOPER
Hossein Farzaneh
PO Box 720088
Norman, Oklahoma
73070
PH: 405.892.2222
FAX: 405.793.6024

LOT PLAN NOTE
1. THE MAXIMUM BUILDING COVERAGE SHALL NOT EXCEED 50% FOR ALL LOTS WITHIN THIS DEVELOPMENT.
2. THE MAXIMUM TOTAL IMPERVIOUS COVERAGE SHALL NOT EXCEED 50% FOR ALL LOTS WITHIN THIS DEVELOPMENT.

LEGEND

EX	EXISTING
R/W	RIGHT-OF-WAY
BL	BUILDING LIMIT LINE
U/E	UTILITY EASEMENT
D/E	DRAINAGE EASEMENT
N/L	NONADJACENT LINE
L.W.A.	LIMITS OF NO ACCESS

FINAL SITE DEVELOPMENT PLAN
TURTLE CROSSING, A PLANNED UNIT DEVELOPMENT

Crafton Tull
A Division of Tull Construction Company, Inc.

SHEET NO: 1 OF 1
DATE: 01/07/2021
PROJECT NO: 18614200