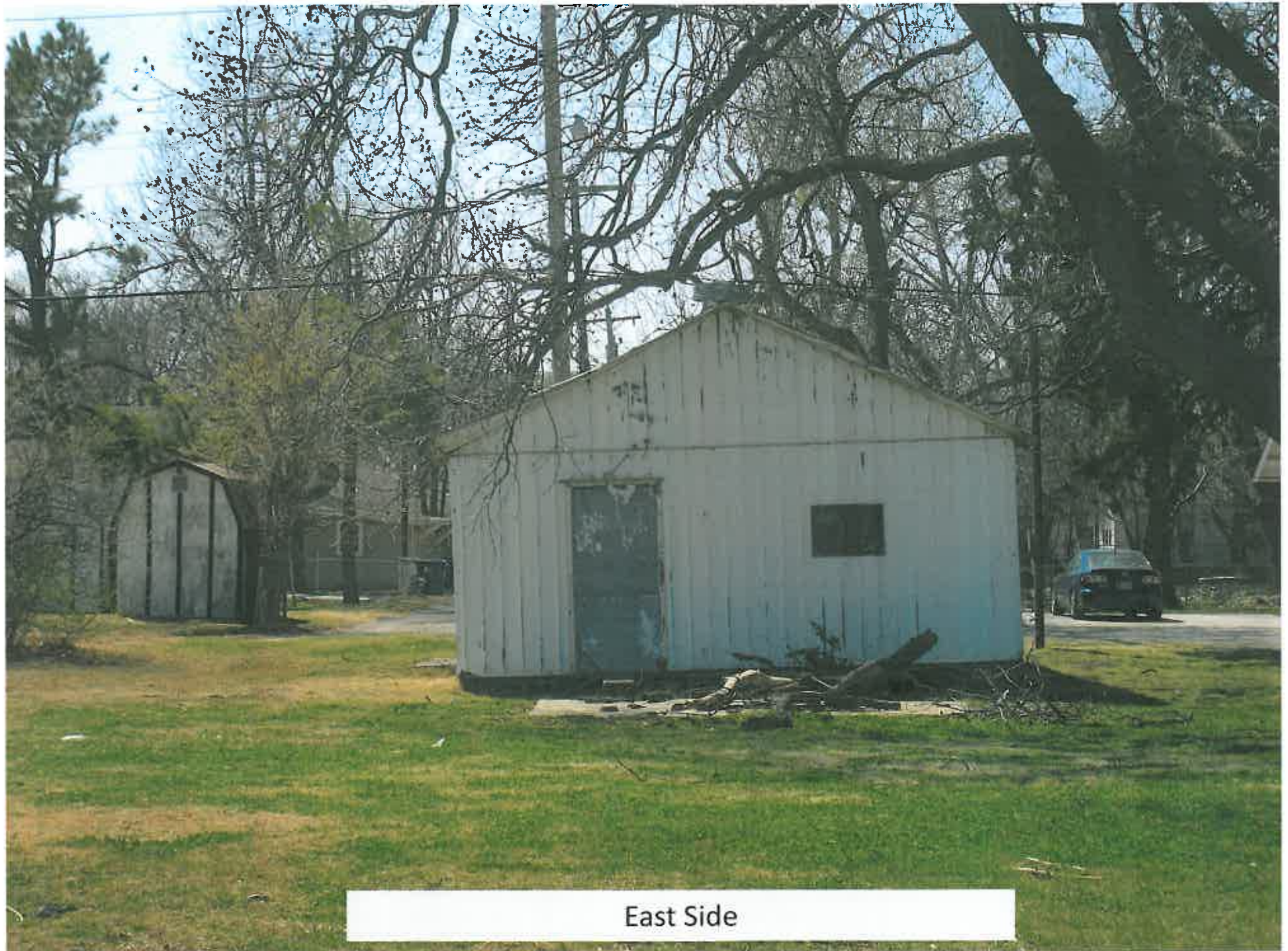


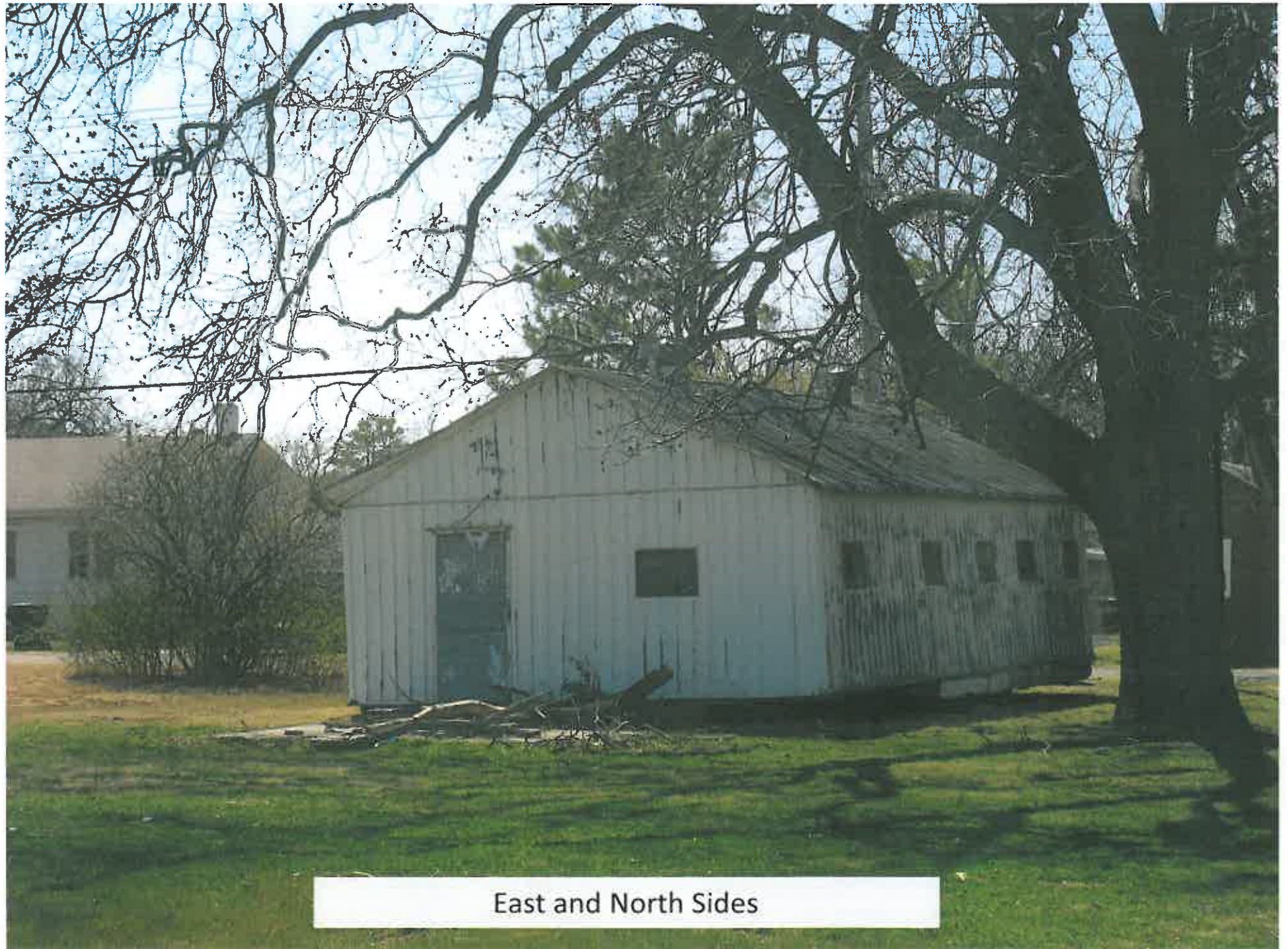
South and East Sides





East Side





East and North Sides

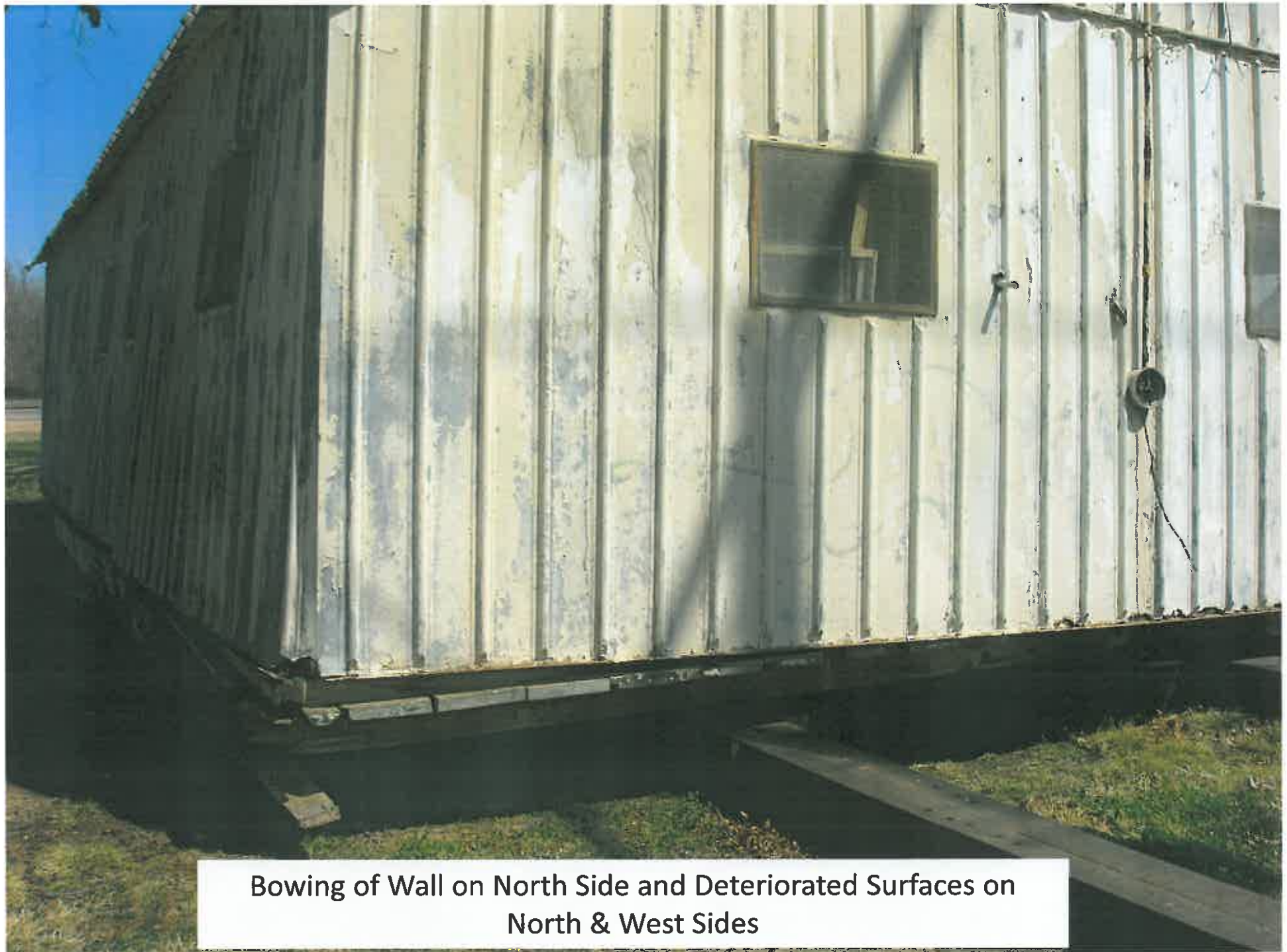




Close View of Northwest Corner

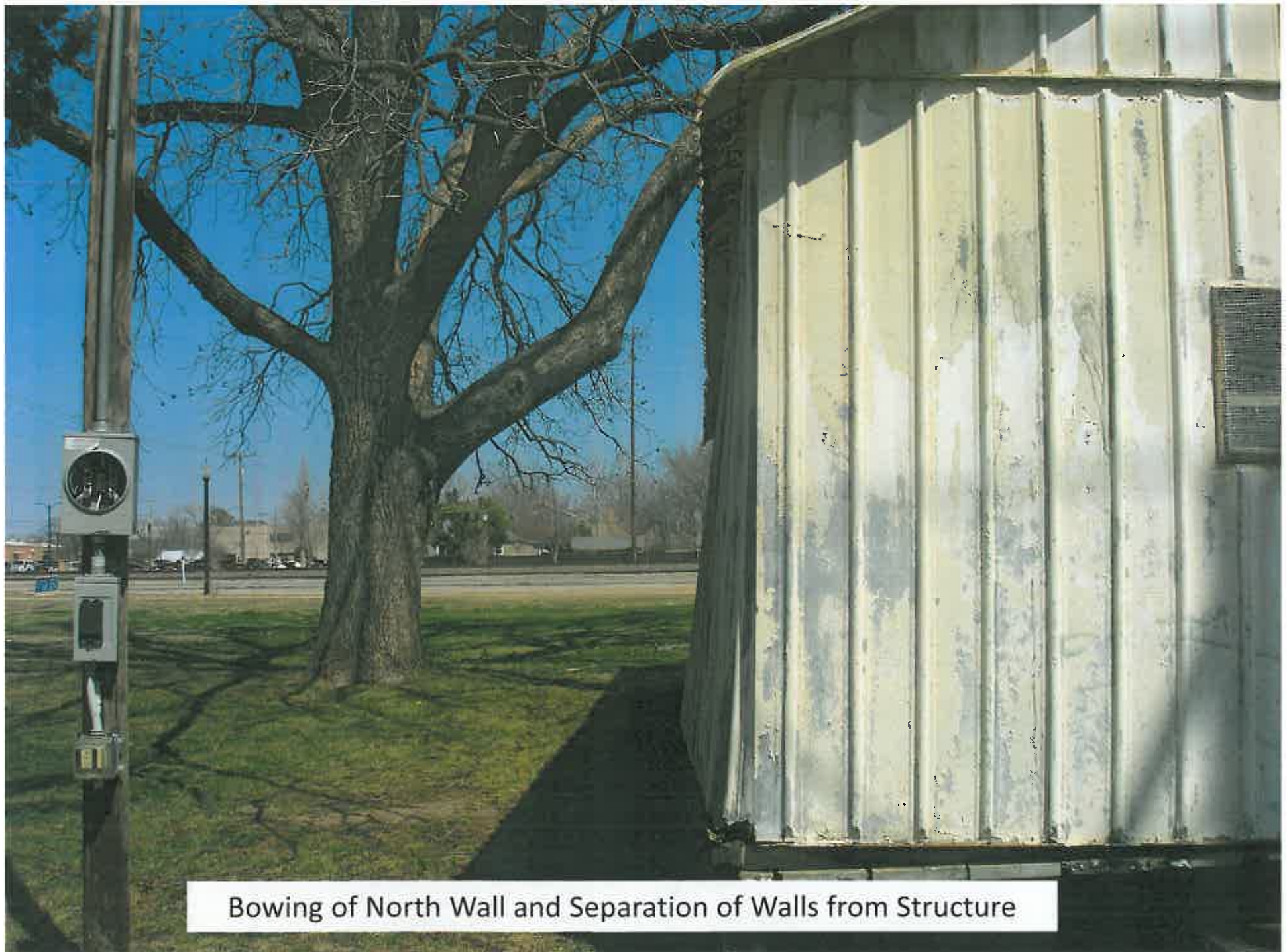






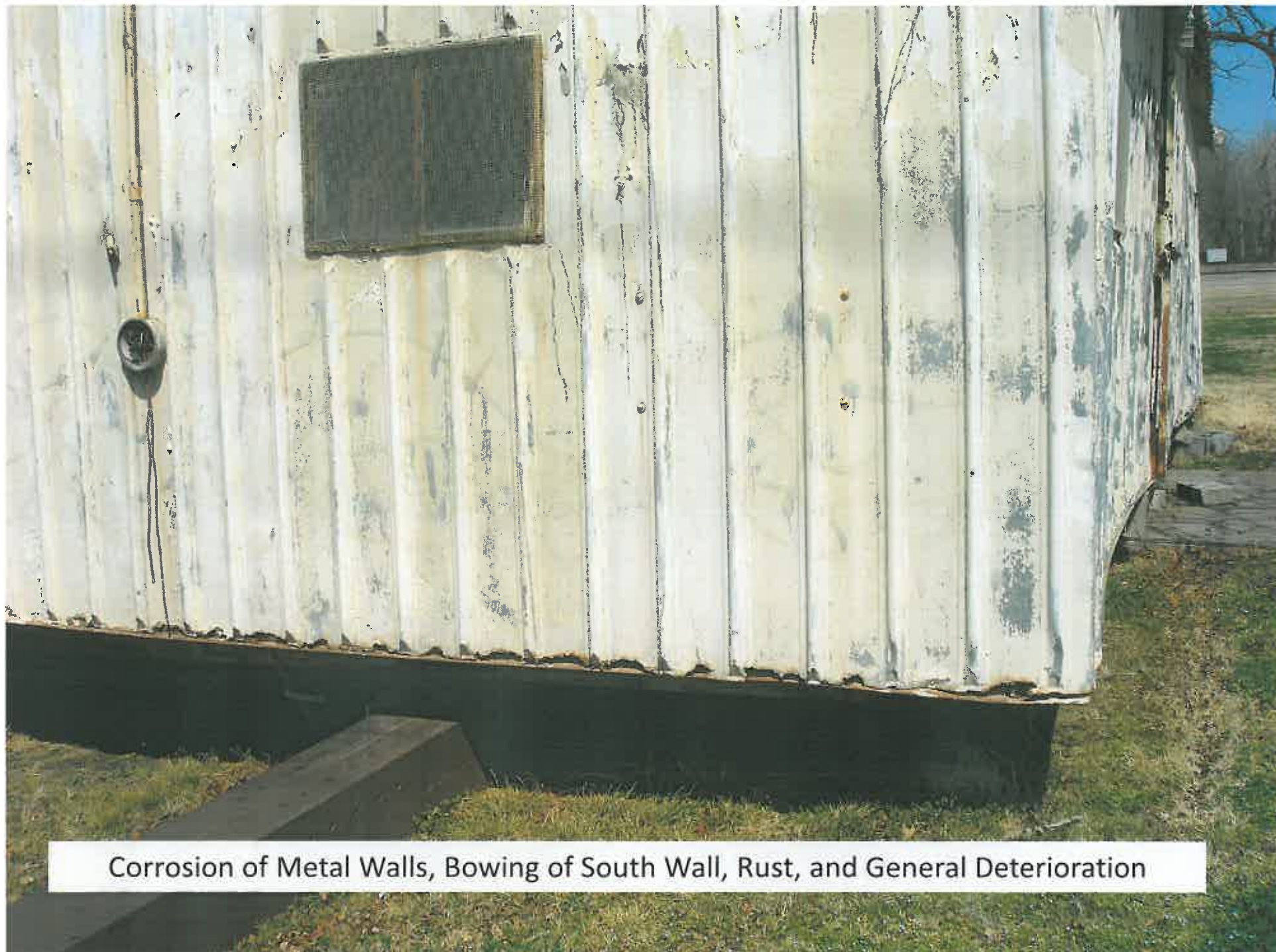
Bowing of Wall on North Side and Deteriorated Surfaces on North & West Sides





Bowing of North Wall and Separation of Walls from Structure





Corrosion of Metal Walls, Bowing of South Wall, Rust, and General Deterioration





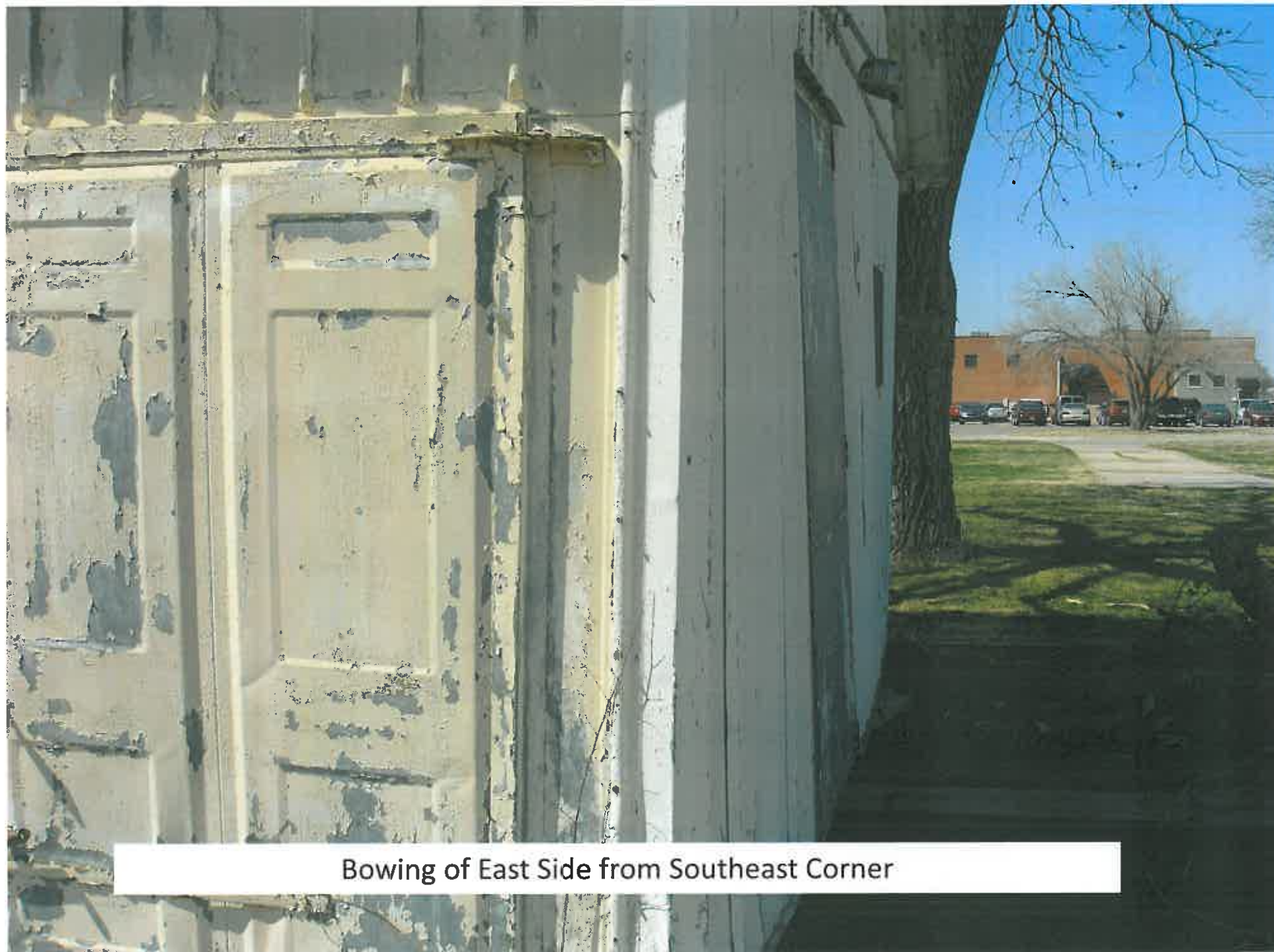
South Side Wall, Bowing, Rotting Wood, Rust, Deteriorated Surfaces, Lack of Foundation





Warped South Wall with Access to Interior to Rodents, Etc. & Deterioration





Bowing of East Side from Southeast Corner





Rotted and Missing Structural Members on North Wall