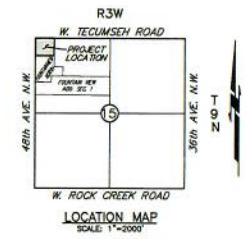
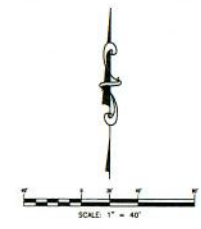
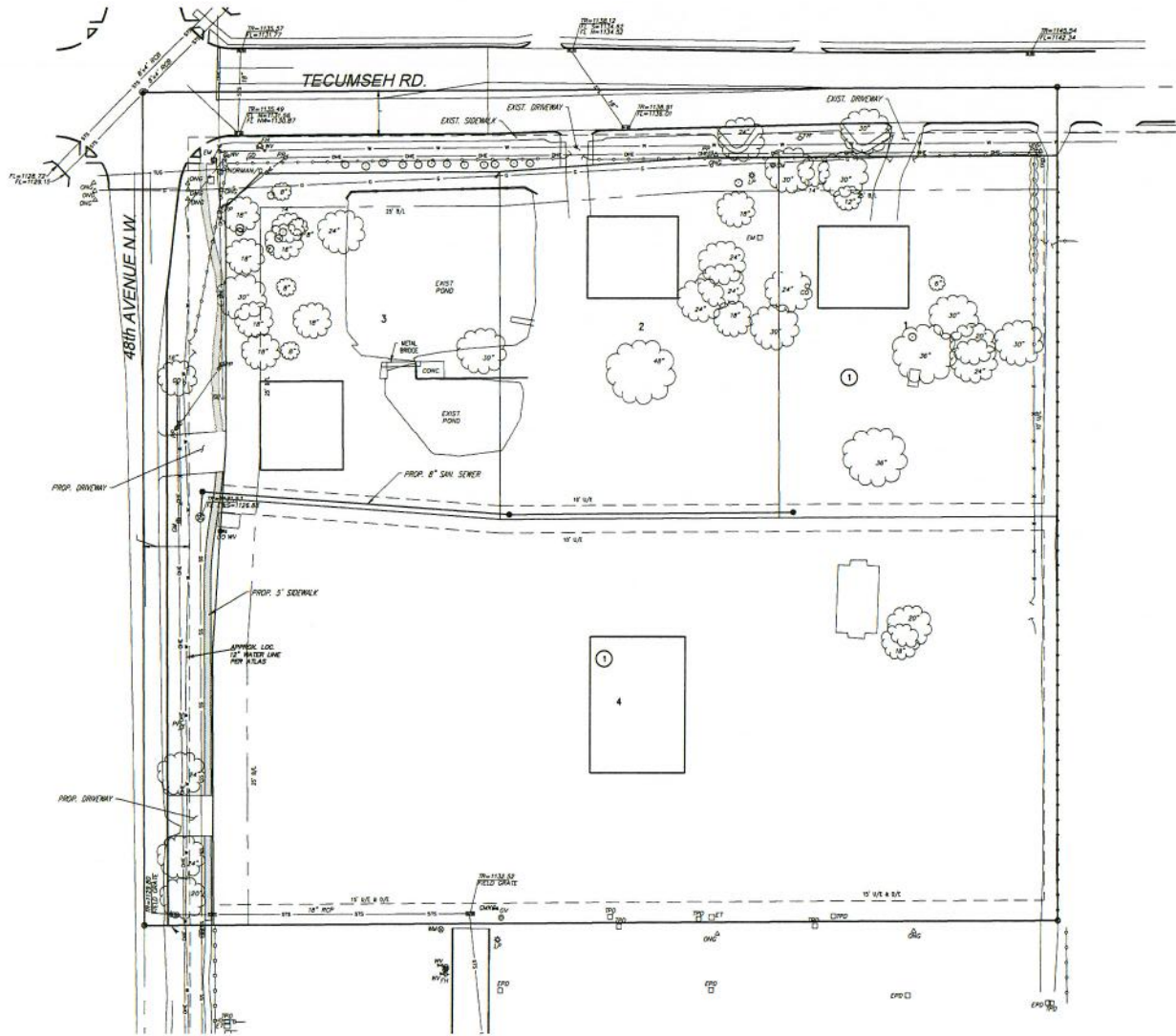


FINAL SITE DEVELOPMENT PLAN
FOUNTAIN VIEW IV
 A PLANNED UNIT DEVELOPMENT
 A PART OF THE N.W. 1/4, SECTION 15, T9N, R3W, I.M.
 NORMAN, CLEVELAND COUNTY, OKLAHOMA



© SMC CONSULTING ENGINEERS, P.C. ALL RIGHTS RESERVED. THESE DOCUMENTS MAY NOT BE USED FOR ANY PURPOSES WITHOUT THE WRITTEN PERMISSION FROM SMC CONSULTING ENGINEERS, P.C.

OWNER/DEVELOPER
 FVN DEVELOPMENT, L.L.C.
 221 48th Avenue NW
 Norman, OK 73072
 (405) 326-7878

ENGINEER:
 SMC Consulting Engineers, P.C.
 813 W. Main Street
 Oklahoma City, OK 73106
 (405) 252-7718

FOUNTAIN VIEW IV
48th AVE. N.W. & TECUMSEH RD.
NORMAN, OKLAHOMA

SMC
 Consulting Engineers, P.C.
 SMC CONSULTING ENGINEERS, P.C.
 813 W. MAIN STREET
 OKLAHOMA CITY, OKLAHOMA 73106
 (405) 252-7718
 FAX: (405) 252-7719
 www.smccoe.com

PROJECT NO: 180430
 DATE: 04/21/18
 SCALE: 1" = 40'
 DRAWN BY: D.C.
 CHECKED BY: S.M.
 P.C. NUMBER:

FINAL SITE DEVELOPMENT PLAN
 SHEET NO. 1