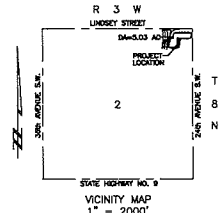
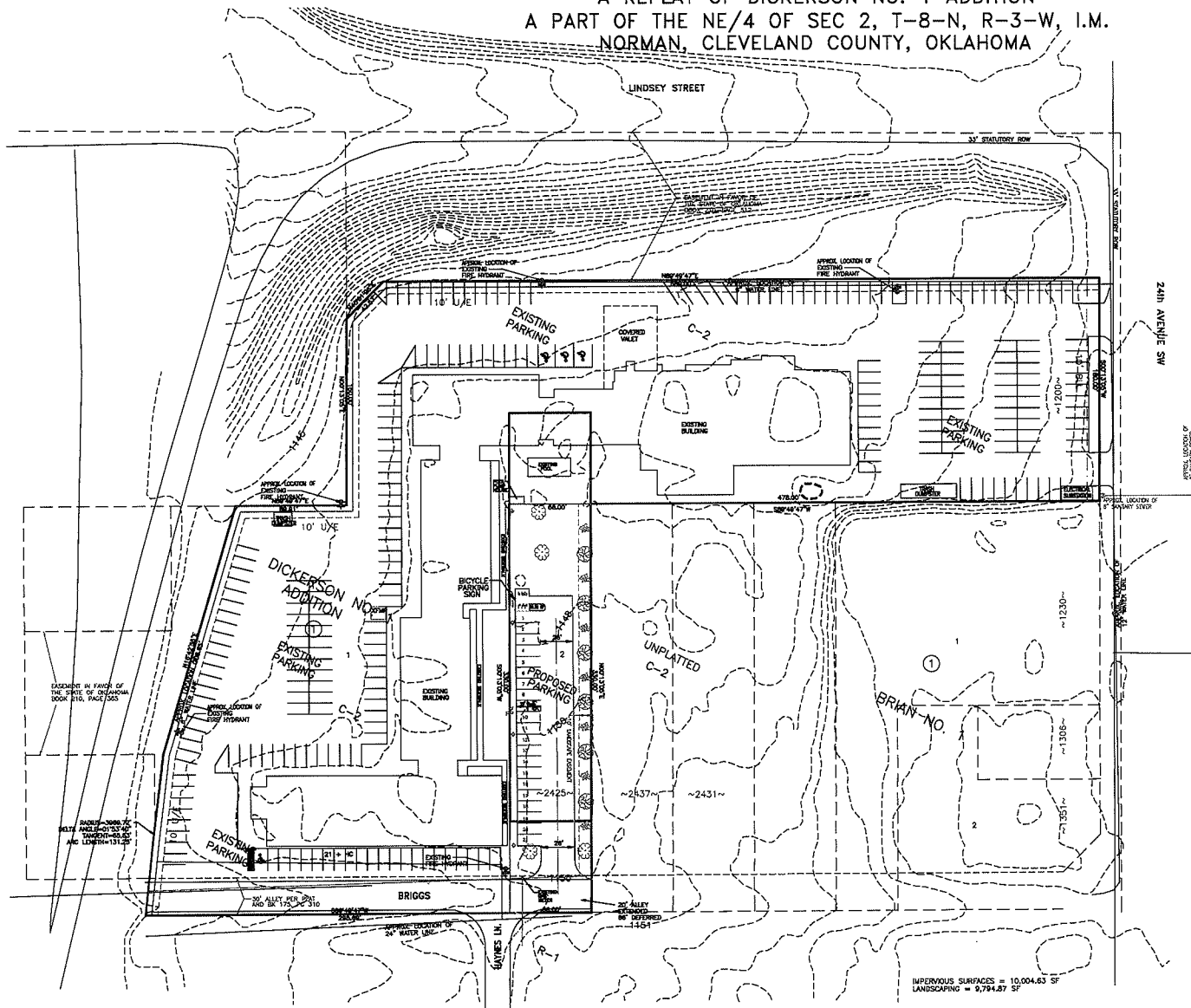


SITE PLAN
OF
SOONER LEGENDS
A REPLAT OF DICKERSON NO. 1 ADDITION
A PART OF THE NE/4 OF SEC 2, T-8-N, R-3-W, I.M.
NORMAN, CLEVELAND COUNTY, OKLAHOMA



SCALE 1" = 40'

DEVELOPER
SOONER LEGENDS, LLC
1200 24th AVE. SW
NORMAN, OK 73072
PHONE: (405) 326-5432

LEGAL DESCRIPTION:

A TRACT OF LAND LYING IN THE NORTHEAST CORNER (NE/4) OF SECTION TWO (2), TOWNSHIP EIGHT (8) NORTH, RANGE THREE (3) WEST OF THE INDIAN MERIDIAN, CLEVELAND COUNTY, OKLAHOMA, BEING MORE PARTICULARLY DESCRIBED AS FOLLOWS:

COMMENCING AT THE NORTHEAST CORNER OF SAID SECTION TWO (2); THENCE S00°13'05"W A DISTANCE OF 149.66 FEET; THENCE N89°49'47"E A DISTANCE OF 60.00 FEET TO THE POINT OF BEGINNING; THENCE FROM SAID POINT OF BEGINNING S00°13'05"W A DISTANCE OF 180.00 FEET; THENCE S89°49'47"W A DISTANCE OF 412.00 FEET; THENCE S00°13'05"W A DISTANCE OF 330.00 FEET; THENCE S89°49'47"W A DISTANCE OF 66.00 FEET; THENCE CONTINUING S89°49'47"W A DISTANCE OF 295.68 FEET TO A POINT ON A CURVE TO THE RIGHT, SAID CURVE HAVING A RADIUS OF 3969.72 FEET, A DELTA ANGLE OF 01°53'40", A CHORD BEARING OF N08°34'24"E, AND A CHORD DISTANCE OF 131.25 FEET; THENCE ALONG SAID CURVE AN ARC DISTANCE OF 131.25 FEET; THENCE N16°42'55"E A DISTANCE OF 208.65 FEET; THENCE N89°49'47"E A DISTANCE OF 89.91 FEET; THENCE N00°13'05"E A DISTANCE OF 150.00 FEET; THENCE N45°01'28"E A DISTANCE OF 42.57 FEET; THENCE N89°49'47"E A DISTANCE OF 580.00 FEET TO THE POINT OF BEGINNING, EXCEPT A STRIP OF LAND 30 FEET IN WIDTH ALONG THE SOUTH SIDE OF THE ABOVE DESCRIBED TRACT TO BE USED FOR ROAD EASEMENT AND PUBLIC UTILITIES USAGE, SAID TRACT CONTAINING 5.03 ACRES, MORE OR LESS, AND SUBJECT TO ANY EASEMENTS OR RIGHTS-OF-WAY OF RECORD.

DATE: 07/30/13		SITE PLAN	
SCALE: 1" = 40'		Sooner Legends	
JOB NUMBER: KEN13044		New Parking Lot	
DRAWN BY: S.C.B.		Norman OK	
CHECKED BY: M.J.M.		ANCHOR ENGINEERING, L.L.C.	
APPROVED BY: D.H.B.		Specializing in Subdivisions	
REVISIONS		DATE	
10004 Quail Place Dr.		06/20/14	
Suite 200		(405) 748-9999	
Oklahoma City, OK 73120		dickerson@anchor-engineering.com	
Project Name: Sooner Legends		Project No.:	

IMPERVIOUS SURFACES = 10,004.63 SF
LANDSCAPING = 9,794.87 SF