

# BOYD STREET COMMONS

A Simple Planned Unit Development

Item 31

Right-of-Way Closing



**SMC**  
Consulting Engineers, P.C.  
Floyd Law Firm, P.C.





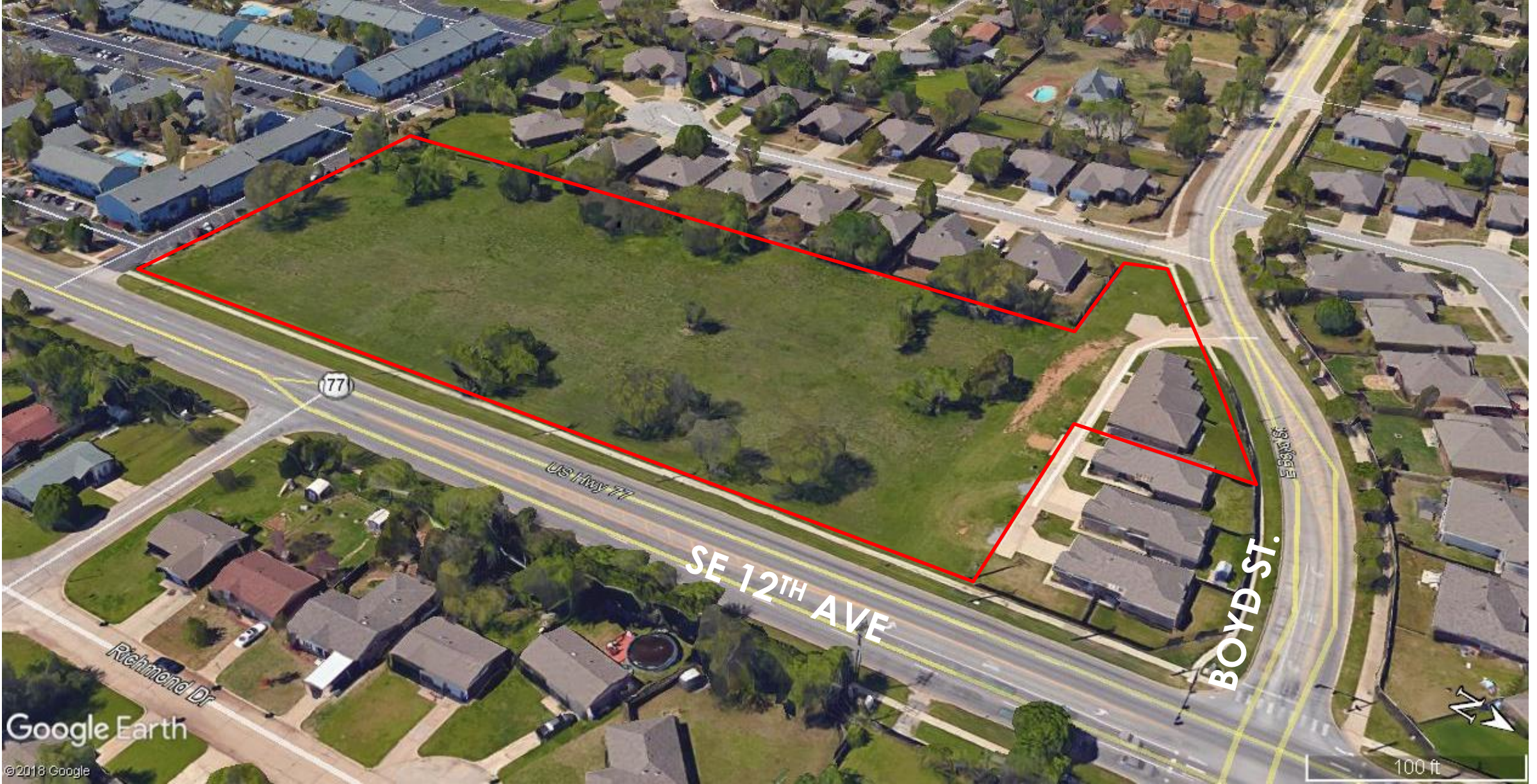


# BOYD STREET COMMONS

Right of Ways







Google Earth

©2018 Google

**WOODS  
ROW  
L.L.C.**

# BOYD STREET COMMONS

Right of Ways

**SMC**

Consulting Engineers, P.C.

Floyd Law Firm, P.C.



THE MCKINNEY  
PARTNERSHIP  
architects





ENTRY OPTION

TRACT BOUNDARY

LIMITS OF RIGHT OF WAY

ENTRY OPTION

# BOYD STREET COMMONS

Right of Ways

WOODS  
ROW  
L.L.C.

**SMC**  
Consulting Engineers, P.C.

Floyd Law Firm, P.C.

**M**  
THE MCKINNEY  
PARTNERSHIP  
architects





WOODS  
ROW  
L.L.C.

# BOYD STREET COMMONS

Rights of Way

**SMC**  
Consulting Engineers, P.C.  
Floyd Law Firm, P.C.

**M**  
THE MCKINNEY  
PARTNERSHIP  
architects