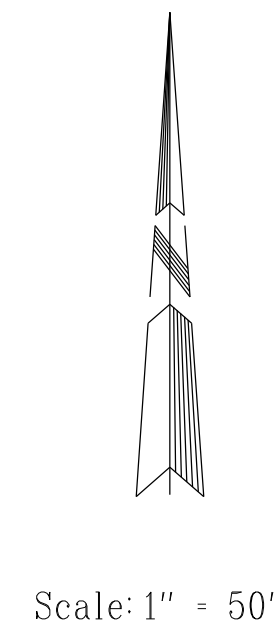
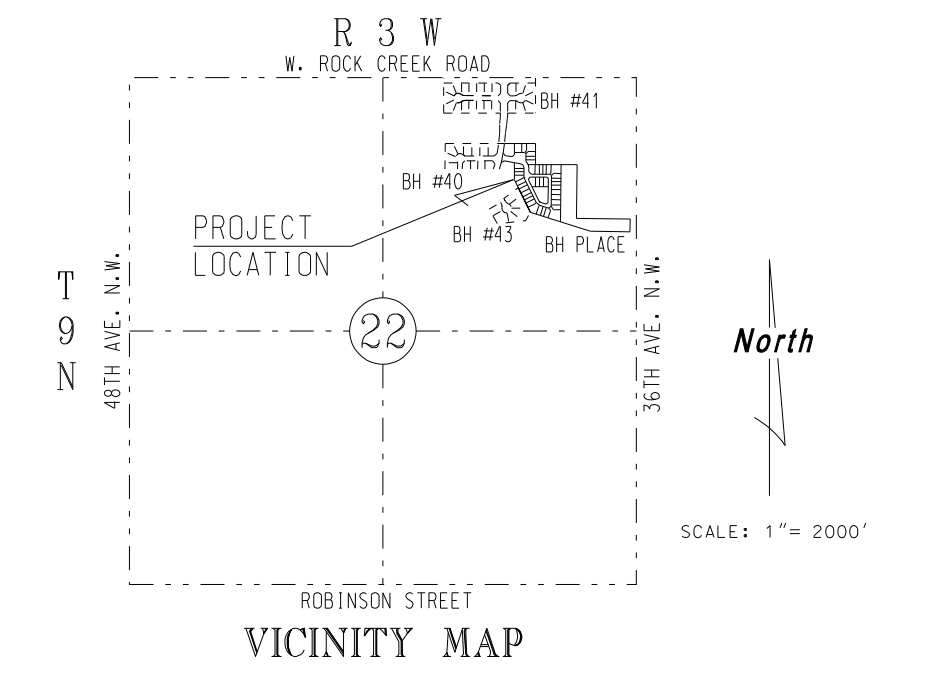


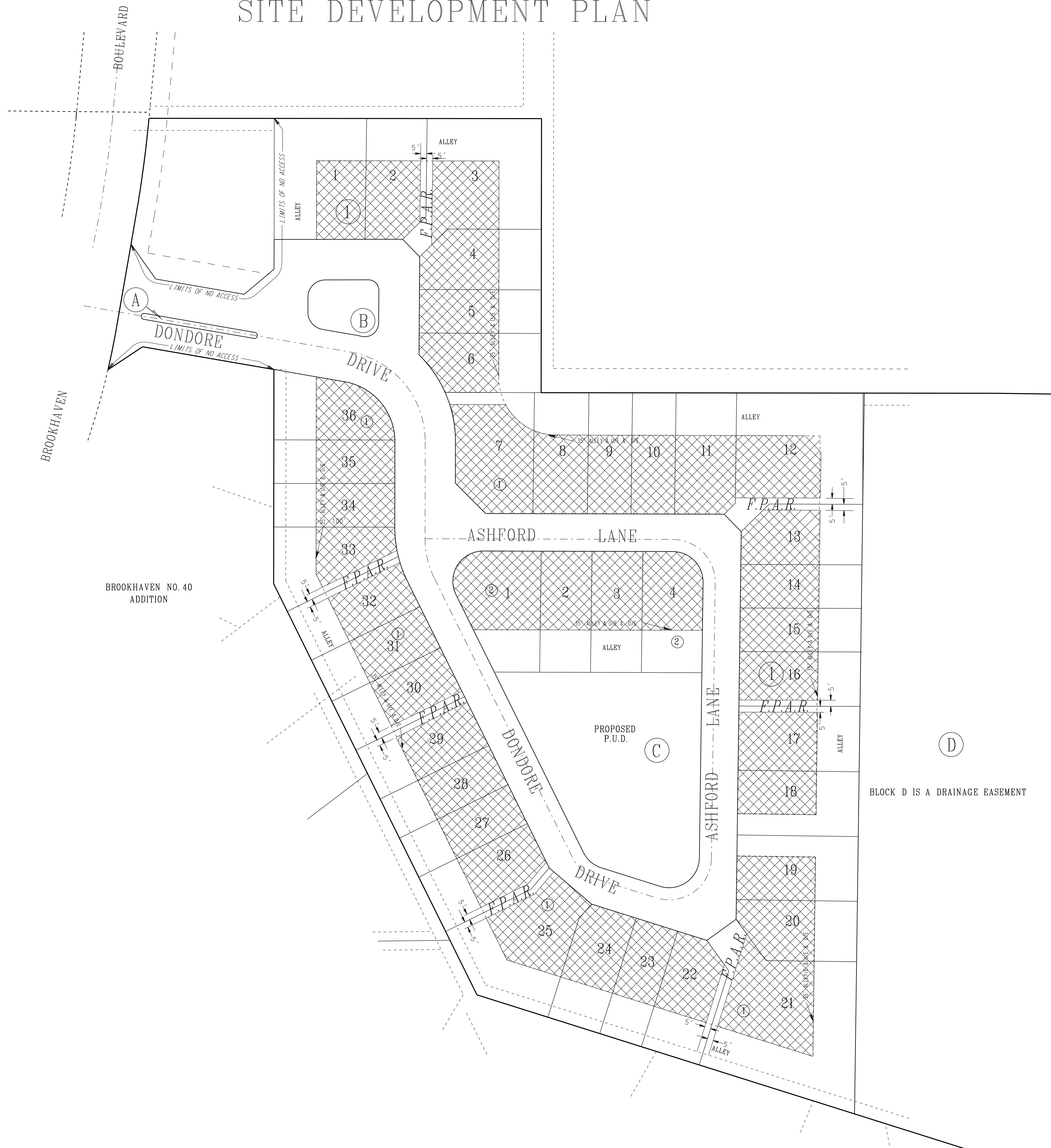
FINAL PLAT BROOKHAVEN PLACE ADDITION A PLANNED UNIT DEVELOPMENT

NE 1/4, SECTION 22, T9N, R3W, I.M.
NORMAN, CLEVELAND COUNTY, OKLAHOMA

SITE DEVELOPMENT PLAN



Scale: 1" = 50'



F.P.A.R. - DENOTES "FIRE PROTECTION ACCESS RESERVE" LOCATIONS

- DENOTES BUILDABLE AREA

DEVELOPER:
Cies, LLC
1203 Brookhaven Boulevard
Norman, Oklahoma 73072
405-329-0256

ENGINEER/SURVEYOR
CLOUR PLANNING & ENGINEERING SERVICES, LLC
Phil Clour, P.E. No. 10849, L.S. No. 1160
123 Tonhawa St., Suite 105
Norman, Oklahoma 73069

| | | |
|--|---|------------------|
| <p>ENGINEERS SURVEYORS PLANNERS</p> | <p>Clour Planning & Engineering Services</p> <p>123 Tonhawa St., Suite 105 Norman, OK 73069 • 405-329-8500 • C.A. No. 5976, Exp. Date 06-28-2014</p> | |
| <p>BROOKHAVEN PLACE ADDITION A PLANNED UNIT DEVELOPMENT A PART OF THE NE/4, SEC. 22, T9N-R3W, I.M. NORMAN, CLEVELAND COUNTY, OKLAHOMA SITE DEVELOPMENT PLAN</p> | | |
| Drawn By: MICROSTATION Checked By: Drwg. File: LOT_COVERAGE.DGN Date: 04-01-2013 Rev.: 05-01-2013 | Sheet 3 of 3 | JOB NO. P-031 |