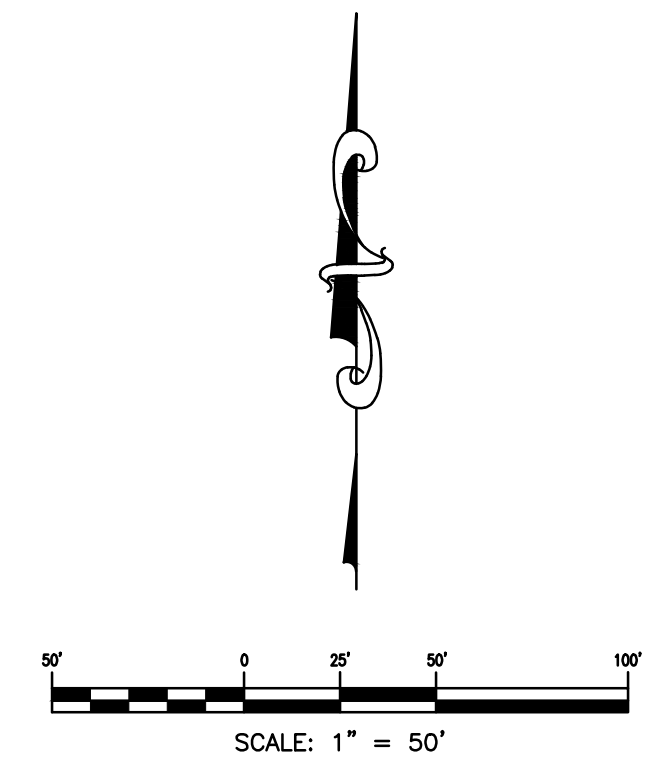
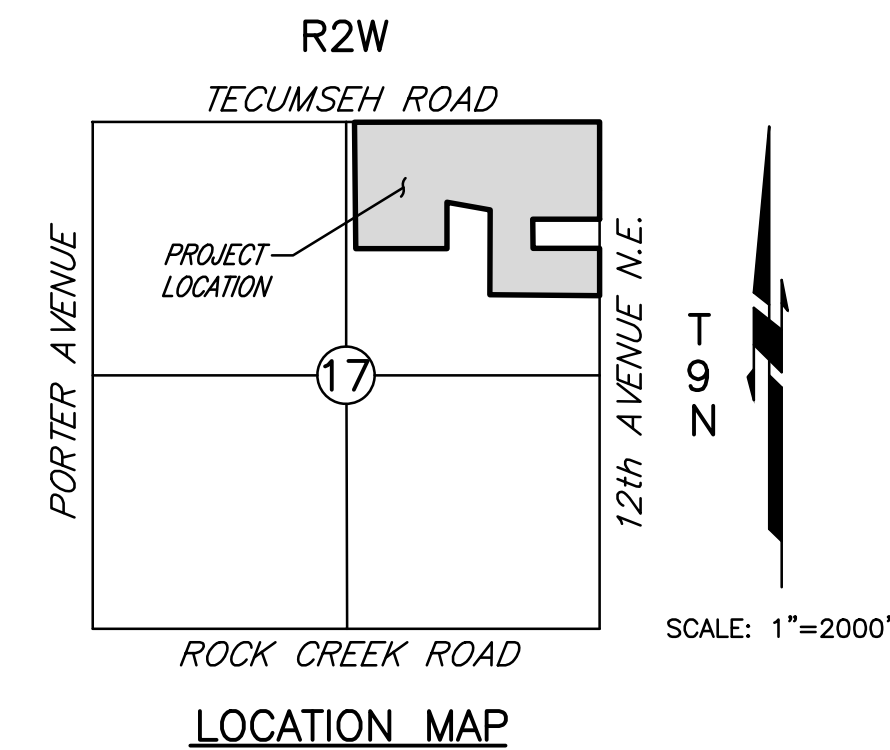
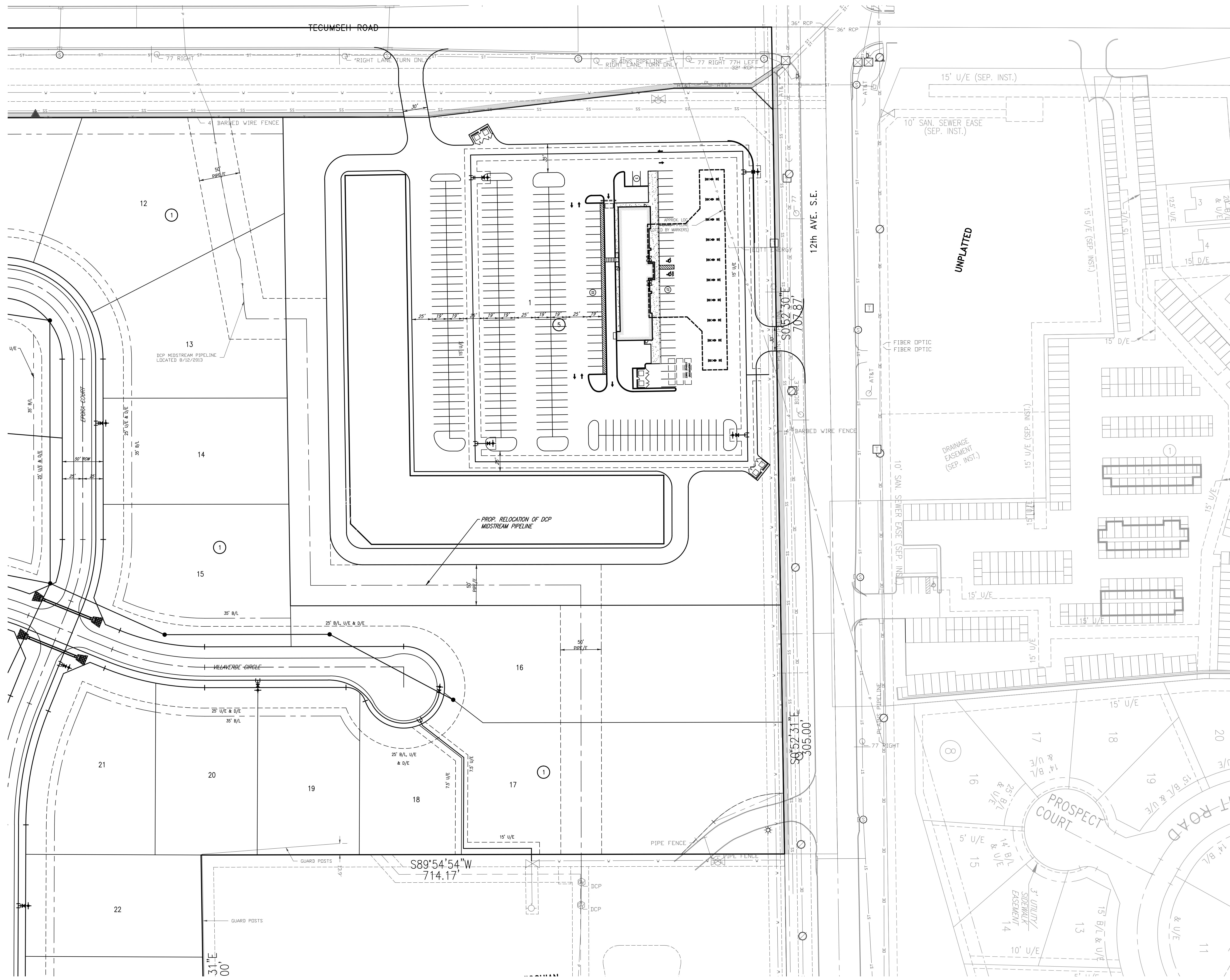


# PRELIMINARY SITE PLAN

## MONTORO RIDGE

A PART OF THE N.E. 1/4, SECTION 17, T9N, R2W, I.M.  
NORMAN, CLEVELAND COUNTY, OKLAHOMA



© SMC CONSULTING ENGINEERS, P.C. ALL RIGHTS RESERVED. THESE DOCUMENTS MAY NOT BE USED FOR ANY PURPOSES WITHOUT PRIOR WRITTEN PERMISSION FROM SMC CONSULTING ENGINEERS, P.C.

**OWNER/DEVELOPER**  
LANDMARK LAND COMPANY,  
1400 N. PORTER AVE.  
NORMAN, OKLAHOMA 73071  
PH: (405)292-5283

**PREPARED BY:**  
SMC Consulting Engineers, P.C.  
815 W. Main St.  
Oklahoma City, Oklahoma 73106  
PH: (405)292-7715

**MONTORO RIDGE**  
**TECUMSEH ROAD & 12th AVE. N.E.**  
**NORMAN, OKLAHOMA**

**SMC**  
SMC Consulting Engineers, P.C.  
www.smc-engineers.com  
PH: (405) 292-7715 FAX: (405) 292-7889  
OKLAHOMA CERTIFICATE OF AUTHORIZATION NO. 644 EXP. 08/20/15  
By: [Signature]  
Title: [Title]

PROJECT NO.: 5477.00  
DATE: 12/02/13  
SCALE: 1" = 50'  
DRAWN BY: G.C.  
ENGINEER: Christopher D. Anderson  
P.E. NUMBER: 18288

**PRELIMINARY SITE PLAN**  
SHEET NO.  
**1**