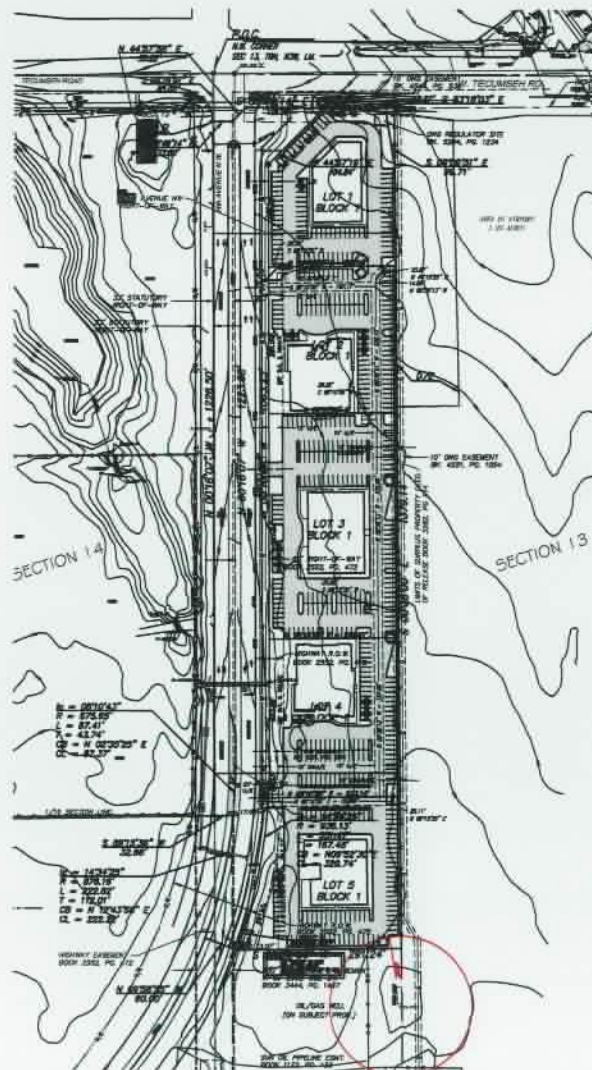


FINAL SITE DEVELOPMENT PLAN
UNIVERSITY NORTH PARK PROFESSIONAL CENTER
 A PLANNED UNIT DEVELOPMENT
 A PART OF THE NW 1/4 OF SECTION 13 AND THE NE 1/4 OF SECTION 14, T9N, R3W, I.M.
 NORMAN, CLEVELAND COUNTY, OKLAHOMA



© SMC CONSULTING ENGINEERS, P.C. ALL RIGHTS RESERVED. THIS DRAWING MAY NOT BE USED FOR ANY PURPOSES WITHOUT WRITTEN PERMISSION FROM SMC CONSULTING ENGINEERS, P.C.

OWNER'S ADDRESS
 UNIVERSITY NORTH PARK
 PROFESSIONAL CENTER, LLC
 2201 WEST LAKESIDE
 SUITE 300
 NORMAN, OK 73069
 PH: (405) 850-0000

**UNIVERSITY NORTH PARK
 PROFESSIONAL CENTER, PUD**
 24th AVE. N.W. &
 TECUMSEH ROAD
 NORMAN, OKLAHOMA

SMC CONSULTING ENGINEERS, P.C.
 2201 WEST LAKESIDE, SUITE 300
 NORMAN, OKLAHOMA 73069
 PH: (405) 850-0000
 FAX: (405) 850-0001
 WWW.SMC-OKLAHOMA.COM

PROJECT REVISIONS
 NO. 1
 DATE: 11/11/11
 BY: J. L. BAKER
 CHECKED: J. L. BAKER
 P.C. BAKER 11/11/11

**FINAL SITE
 DEVELOPMENT PLAN**

Sheet No.
 1