

**Legal Description**

The East One Half (E/2) of Lots Seven (7), Eight (8), Nine (9), Ten (10), Eleven (11), Twelve (12), Thirteen (13), Fourteen (14), Fifteen (15) and Sixteen (16), in Block Ninety (90), of ORIGINAL TOWNSITE OF NORMAN, Cleveland County, Oklahoma, according to the recorded plat thereof, together with the West fifty feet of Park Avenue adjoining on the East of said lots, which has been vacated by the City of Norman.

**Land Area:**

29,999.76 Square Feet or 0.69 Acres ±.

**Topographic Survey**

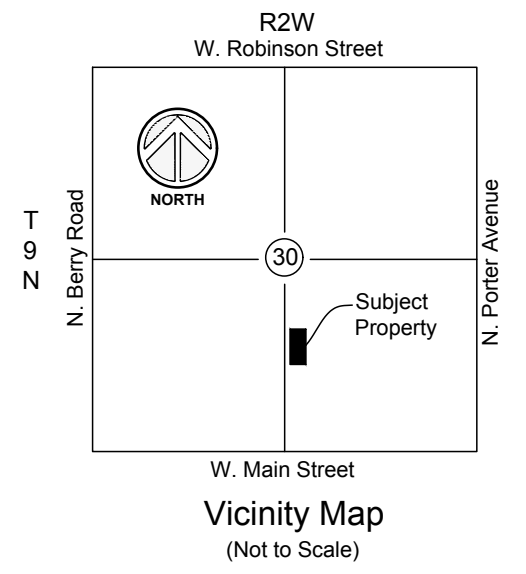
**Basis of Bearings:**

Per the Oklahoma State Plane Coordinate System of 1983 (NAD83), North Zone.



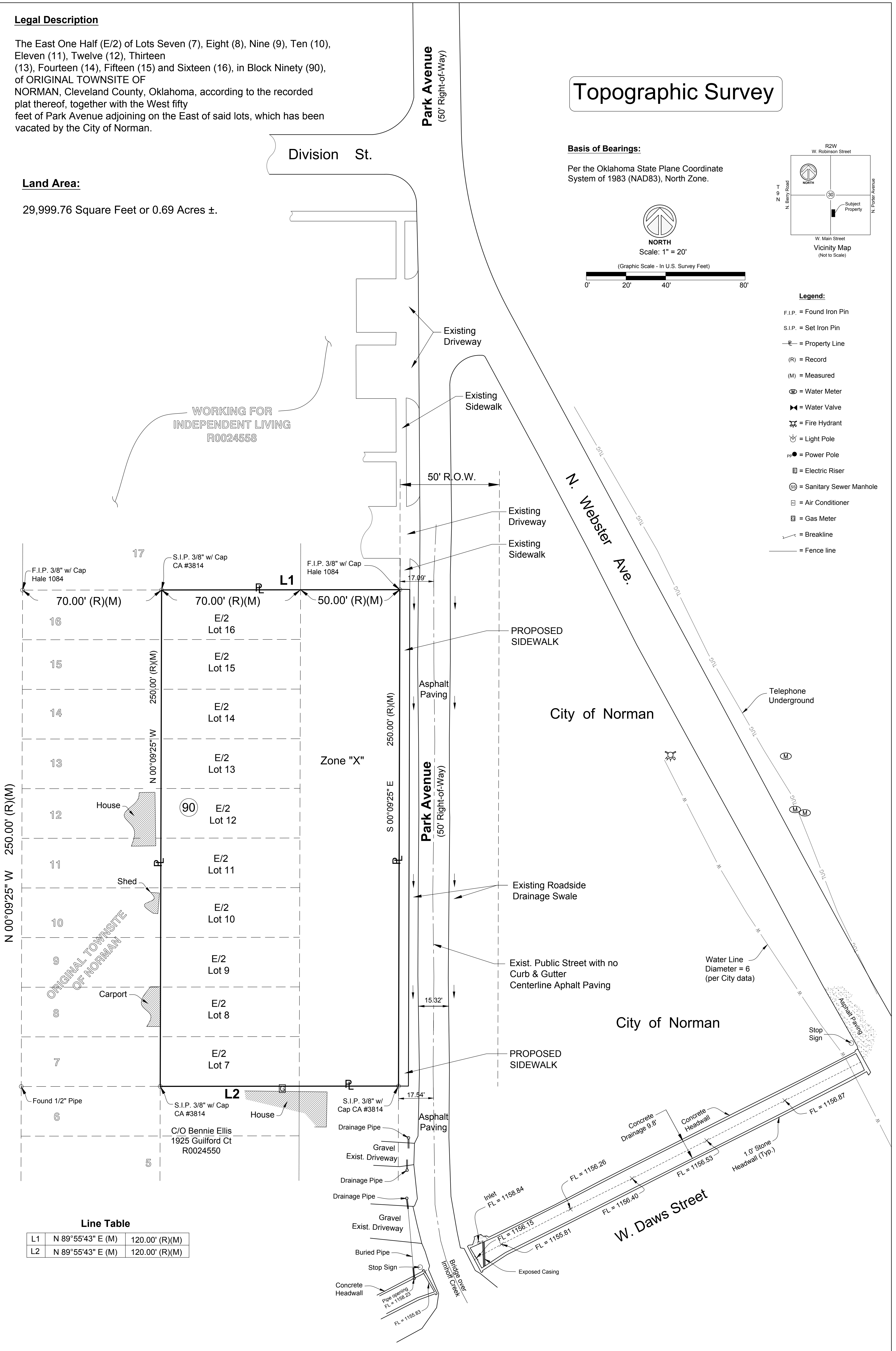
NORTH  
Scale: 1" = 20'

(Graphic Scale - In U.S. Survey Feet)



**Legend:**

- F.I.P. = Found Iron Pin
- S.I.P. = Set Iron Pin
- P— = Property Line
- (R) = Record
- (M) = Measured
- ⊕ = Water Meter
- ⊕ = Water Valve
- ⊕ = Fire Hydrant
- ⊕ = Light Pole
- ⊕ = Power Pole
- ⊕ = Electric Riser
- ⊕ = Sanitary Sewer Manhole
- ⊕ = Air Conditioner
- ⊕ = Gas Meter
- = Breakline
- = Fence line



**Line Table**

L1	N 89°55'43" E (M)	120.00' (R)(M)
L2	N 89°55'43" E (M)	120.00' (R)(M)