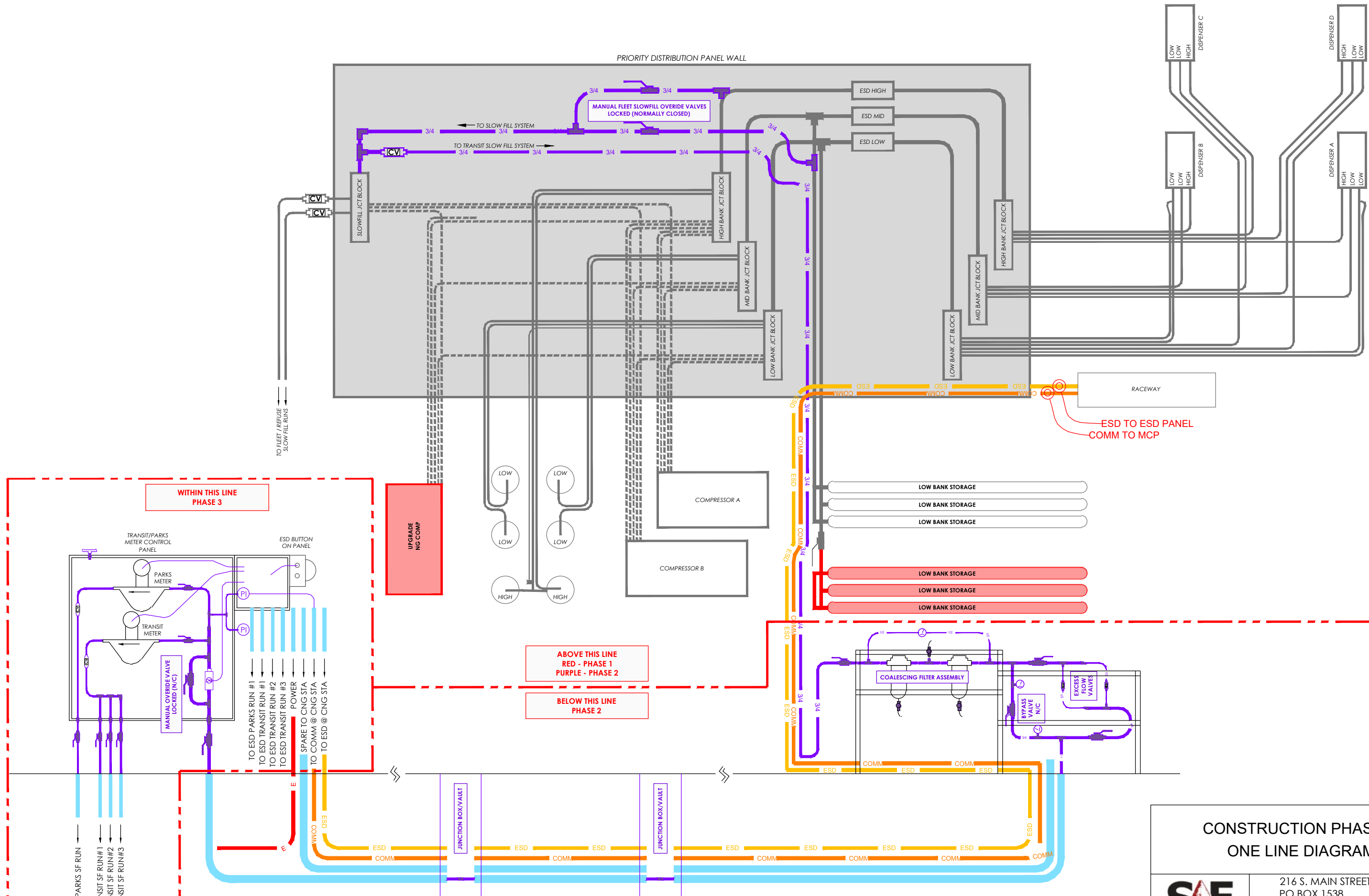


PRIORITY DISTRIBUTION PANEL WALL



WITHIN THIS LINE
PHASE 3

ABOVE THIS LINE
RED - PHASE 1
PURPLE - PHASE 2

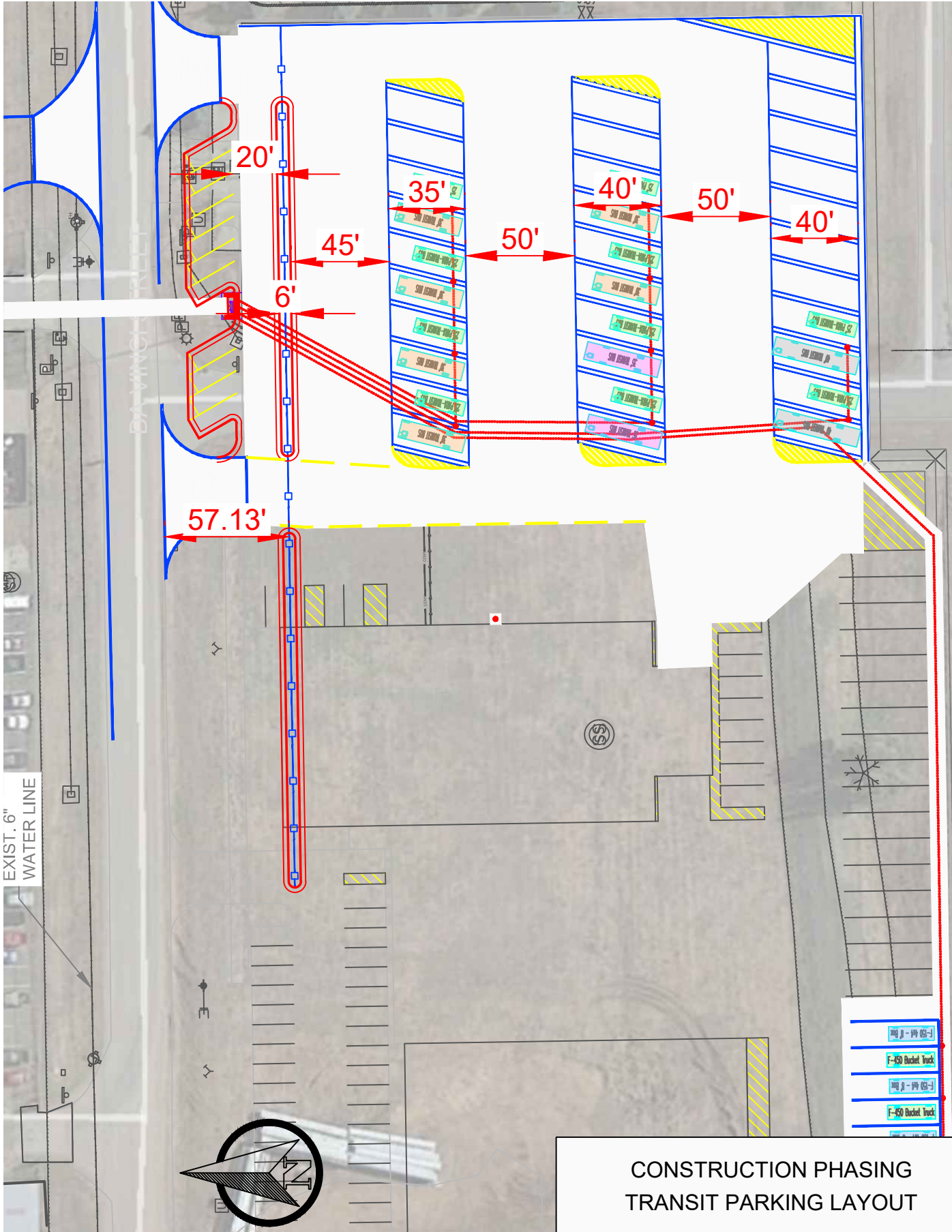
BELOW THIS LINE
PHASE 2

RACEWAY
ESD TO ESD PANEL
COMM TO MCP

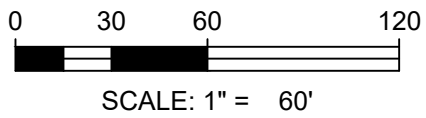
CONSTRUCTION PHASING
ONE LINE DIAGRAM



216 S. MAIN STREET
PO BOX 1538
JOPLIN, MISSOURI 64802
TEL: 417.624.2333
FAX: 417.624.2441
www.smallarrow.com



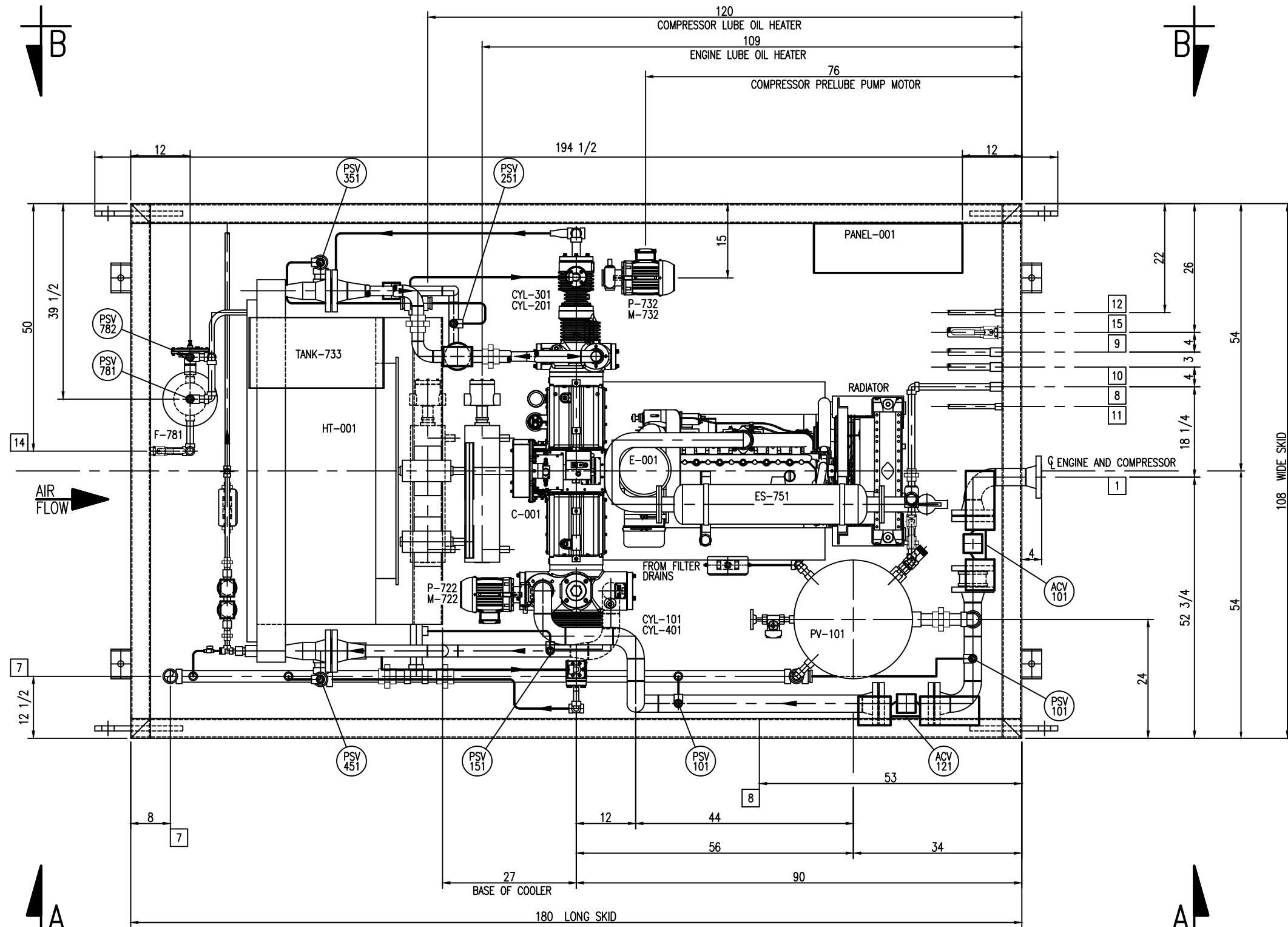
CONSTRUCTION PHASING TRANSIT PARKING LAYOUT



216 S. MAIN STREET
PO BOX 1538
JOPLIN, MISSOURI 64802
TEL: 417.624.2333
FAX: 417.624.2441
www.smallarrow.com

SCHEDULE OF OPENINGS

MARK	QTY	SIZE	RATING	TYPE	SERVICE
1	1	3"	300#	RF	UNIT INLET
2	1	1/2"	6000#	NPT	UNIT OUTLET - DIRECT FILL
3	1	1/2"	6000#	NPT	UNIT OUTLET - HIGH PRESSURE
4	1	1/2"	6000#	NPT	UNIT OUTLET - MEDIUM PRESSURE
5	1	1/2"	6000#	NPT	UNIT OUTLET - LOW PRESSURE
6	1	1/2"	6000#	NPT	UNIT OUTLET - SLOW FILL
7	1	2"	3000#	NPT	RELIEF VALVE HEADER OUTLET
8	1	1"	3000#	NPT	SCRUBBER DRAIN
9	1	1"	3000#	NPT	ENGINE AND COMPRESSOR OIL DRAIN
10	1	1"	3000#	NPT	ENGINE AND COMPRESSOR OIL MAKE-UP
11	1	1/2"	3000#	NPT	DRIP POT DRAIN
12	1	1/2"	3000#	NPT	CUSTOMER AIR SUPPLY
13	1	3"	TUBING	STUB	ENGINE EXHAUST
14	1	1"	3000#	NPT	FUEL GAS INLET
15	1	1-1/2"	3000#	NPT	STARTER GAS INLET



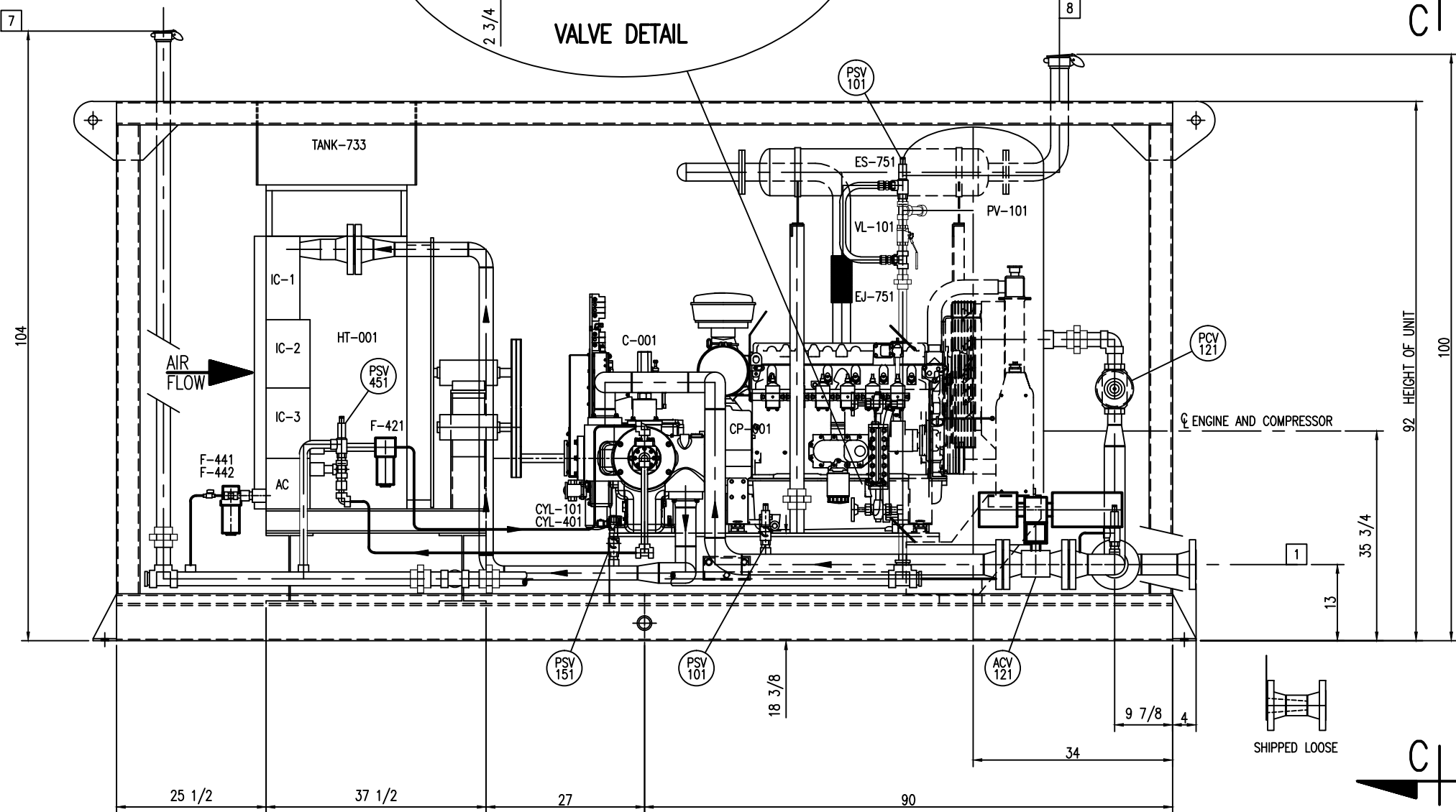
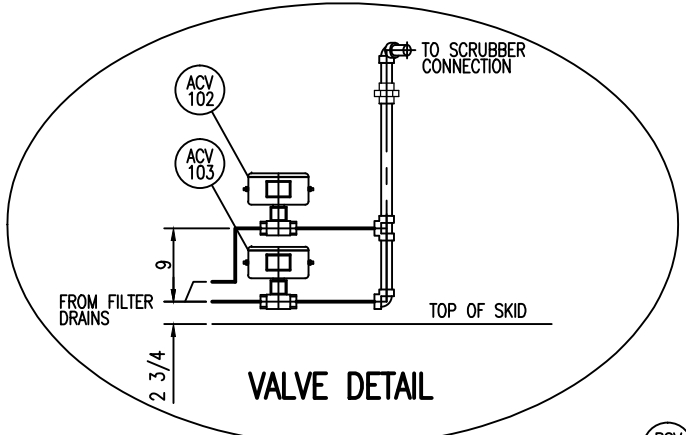
MAJOR COMPONENTS
 COMPRESSOR: VRC-2-4
 CYLINDER: 8.50" DIA BORE
 CYLINDER: 4.25" DIA BORE
 CYLINDER: 2.25" DIA BORE
 CYLINDER: 1.125" DIA BORE
 ENGINE: ARROW VRG-330
 COUPLING: REXNORD CMR 262
 COOLER: AXH AIR-COOLERS, MODEL 42VI
 PANEL: ARROW CNG CONTROL

CUSTOMER: CITY OF NORMAN
 JOB NO.: 10186
 REV. NO.

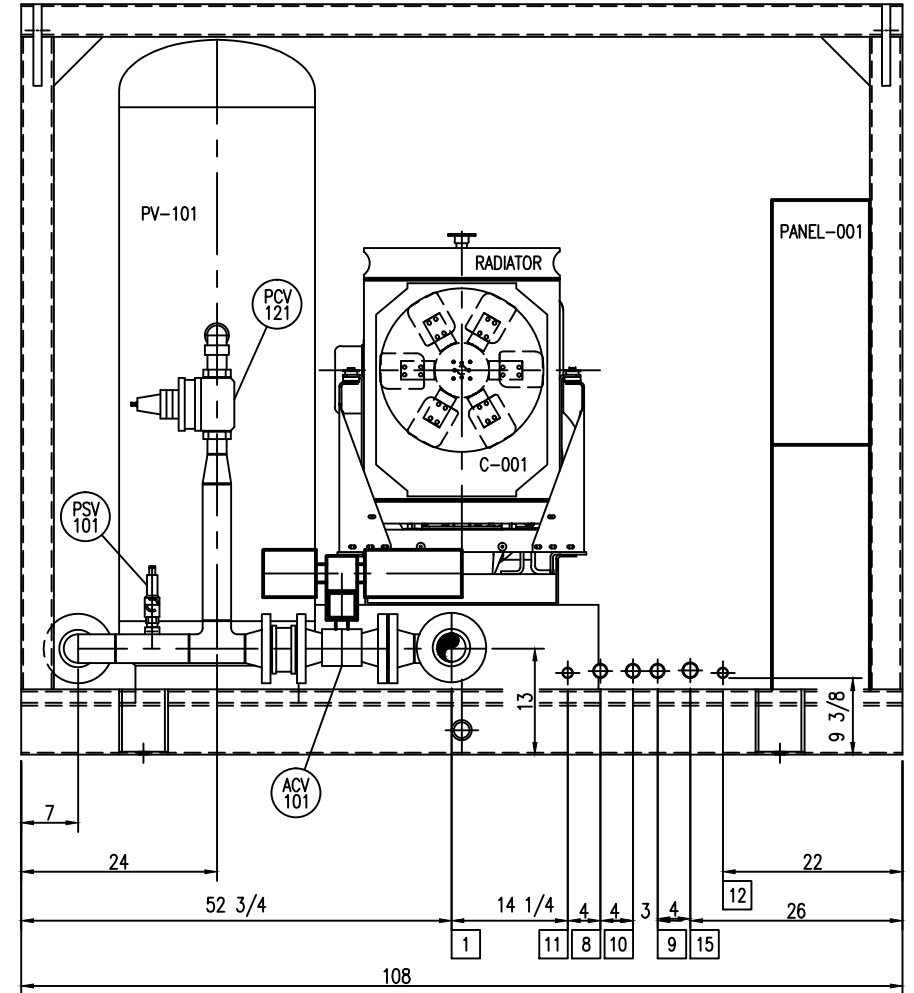
UNLESS OTHERWISE SPECIFIED: DIMENSIONS ARE IN INCHES. BREAK SHARP CORNERS 010-030. SHEET METAL FABRICATION TOLERANCES PER S-8410. CONCENTRICITY (T.I.R.) OF ANY TWO MACHINED DIAMETERS AROUND A COMMON AXIS SHALL BE WITHIN 1/2 THE SUM OF THE TOTAL TOLERANCES ON THOSE DIAMETERS.		REF. NO.:	MODEL: ARROW GAS DIV.	TULSA, OKLAHOMA	
THIS PRINT PROPERTY OF ARROW ENGINE COMPANY AND MUST NOT BE REPRODUCED OR USED IN ANY MANNER DETRIMENTAL TO INTEREST OF SAID COMPANY.	DRILL HOLE TOLERANCES UNLESS OTHERWISE NOTED NO. 30 TO NO.1 DIA. +.003 - .000 1/4 TO 1/2 DIA. +.004 - .000 1/2 TO 3/4 DIA. +.005 - .000 3/4 TO 1 DIA. +.007 - .000 1 TO 2 DIA. +.010 - .000	* * * * * * * * * * * * * * * *	UNLESS OTHERWISE SPECIFIED FRACTIONAL: ± .010 ANGULAR: MACH ± 1/2 X ± .080 XX ± .030 XXX ± .010 SURFACE FINISH: 125 AA	TITLE: GENERAL ASSEMBLY - PLANVIEW	
	REV * CHANGE DESCRIPTION	BY DATE CHD E.C.R. NO.	DRAWN: DMV CHECKED: DMV E.C.R. NO.: *	SCALE: NONE DATE: 2-1-12 APP'D: *	MATERIAL: NOTED DRAWING NO.: GA-001 SHEET 1 OF 1

SCHEDULE OF OPENINGS

MARK	QTY	SIZE	RATING	TYPE	SERVICE
1	1	3"	300#	RF	UNIT INLET
2	1	1/2"	6000#	NPT	UNIT OUTLET - DIRECT FILL
3	1	1/2"	6000#	NPT	UNIT OUTLET - HIGH PRESSURE
4	1	1/2"	6000#	NPT	UNIT OUTLET - MEDIUM PRESSURE
5	1	1/2"	6000#	NPT	UNIT OUTLET - LOW PRESSURE
6	1	1/2"	6000#	NPT	UNIT OUTLET - SLOW FILL
7	1	2"	3000#	NPT	RELIEF VALVE HEADER OUTLET
8	1	1"	3000#	NPT	SCRUBBER DRAIN
9	1	1"	3000#	NPT	ENGINE AND COMPRESSOR OIL DRAIN
10	1	1"	3000#	NPT	ENGINE AND COMPRESSOR OIL MAKE-UP
11	1	1/2"	3000#	NPT	DRIP POT DRAIN
12	1	1/2"	3000#	NPT	CUSTOMER AIR SUPPLY
13	1	3"	TUBING	STUB	ENGINE EXHAUST
14	1	1"	3000#	NPT	FUEL GAS INLET
15	1	1-1/2"	3000#	NPT	STARTER GAS INLET



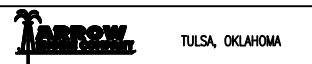
ELEVATION AA



ELEVATION CC

- MAJOR COMPONENTS**
 COMPRESSOR: VRC-2-4
 CYLINDER: 8.50" DIA BORE
 CYLINDER: 4.25" DIA BORE
 CYLINDER: 2.25" DIA BORE
 CYLINDER: 1.125" DIA BORE
 ELECTRIC MOTOR: TOSHIBA, 444T FRAME @ 125 HP
 COUPLING: REYNORD AMR 350
 COOLER: AXH AIR-COOLERS, MODEL 42VVI
 PANEL: ARROW CNG CONTROL

CUSTOMER: CITY OF NORMAN
 JOB NO.: 10186
 REV. NO.



TITLE: GENERAL ASSEMBLY - ELEVATION AA & CC

UNLESS OTHERWISE SPECIFIED: DIMENSIONS ARE IN INCHES. BREAK SHARP CORNERS 010-030. SHEET METAL FABRICATION TOLERANCES PER S-8410. CONCENTRICITY (T.I.R.) OF ANY TWO MACHINED DIAMETERS AROUND A COMMON AXIS SHALL BE WITHIN 1/2 THE SUM OF THE TOTAL TOLERANCES ON THOSE DIAMETERS.	REF. NO.	MODEL:	ARROW GAS DIV.
	DRILL HOLE TOLERANCES UNLESS OTHERWISE NOTED NO. 30 TO NO. 101 DIA. +.003 - .000 1/4 TO 3/4 DIA. +.004 - .000 3/4 TO 1 DIA. +.005 - .000 1 TO 2 DIA. +.010 - .000	UNLESS OTHERWISE SPECIFIED: FRACTIONALS: ± .010 ANGULAR: MACH ± 1/2 X ± .030 3X ± .030 SURFACE FINISH: 125 AA	DRAWN: DMV CHECKED: DMV DATE: 2-1-12 APP'D: * DATE: *

THIS PRINT PROPERTY OF ARROW ENGINE COMPANY AND NOT BE REPRODUCED OR USED IN ANY MANNER DETRIMENTAL TO INTEREST OF SAID COMPANY.

REV

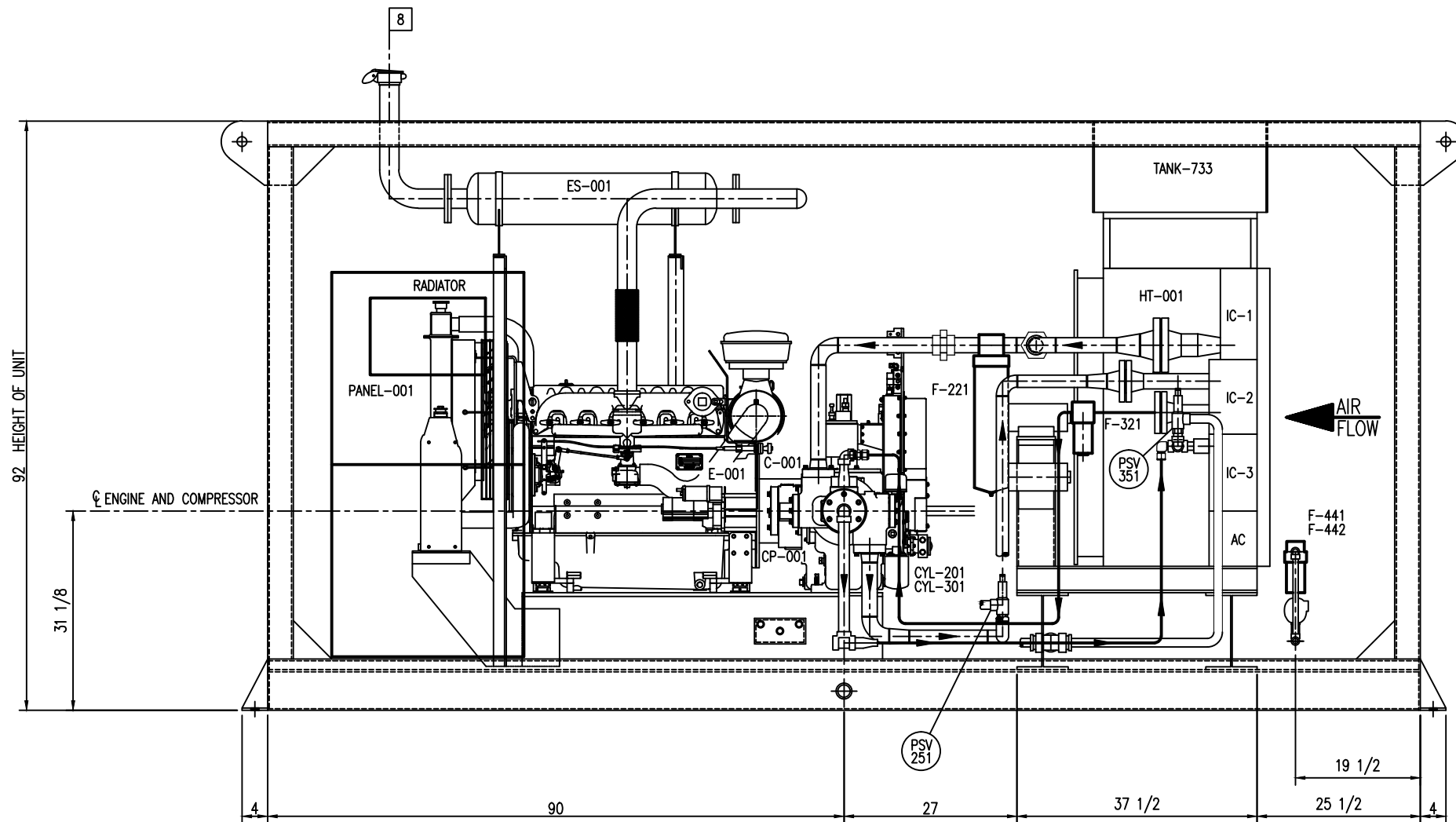
CHANGE DESCRIPTION

BY DATE CHD E.C.R. NO.

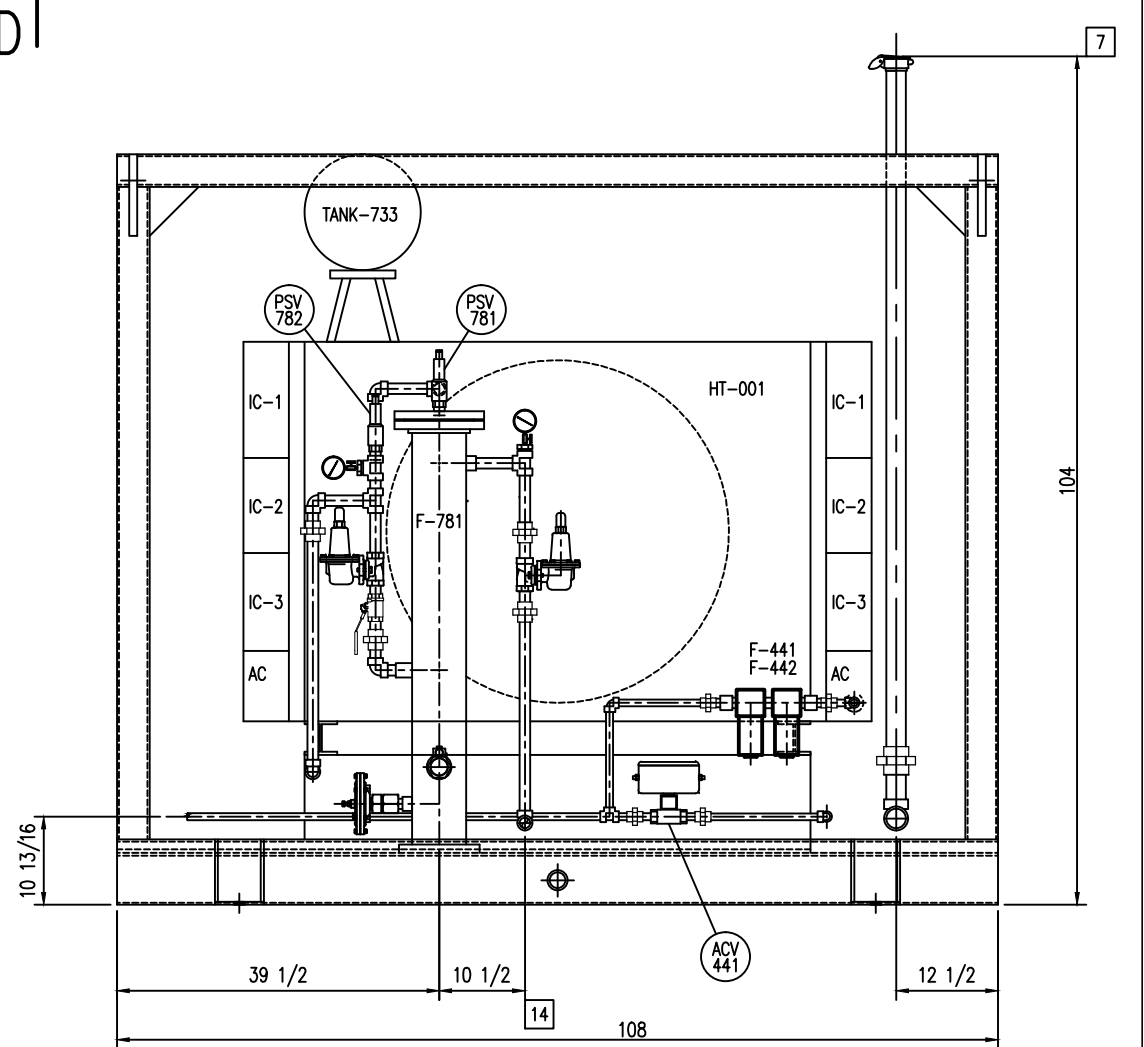
DATE

SCHEDULE OF OPENINGS

MARK	QTY	SIZE	RATING	TYPE	SERVICE
1	1	3"	300#	RF	UNIT INLET
2	1	1/2"	6000#	NPT	UNIT OUTLET - DIRECT FILL
3	1	1/2"	6000#	NPT	UNIT OUTLET - HIGH PRESSURE
4	1	1/2"	6000#	NPT	UNIT OUTLET - MEDIUM PRESSURE
5	1	1/2"	6000#	NPT	UNIT OUTLET - LOW PRESSURE
6	1	1/2"	6000#	NPT	UNIT OUTLET - SLOW FILL
7	1	2"	3000#	NPT	RELIEF VALVE HEADER OUTLET
8	1	1"	3000#	NPT	SCRUBBER DRAIN
9	1	1"	3000#	NPT	ENGINE AND COMPRESSOR OIL DRAIN
10	1	1"	3000#	NPT	ENGINE AND COMPRESSOR OIL MAKE-UP
11	1	1/2"	3000#	NPT	DRIP POT DRAIN
12	1	1/2"	3000#	NPT	CUSTOMER AIR SUPPLY
13	1	3"	TUBING	STUB	ENGINE EXHAUST
14	1	1"	3000#	NPT	FUEL GAS INLET
15	1	1-1/2"	3000#	NPT	STARTER GAS INLET



ELEVATION BB



ELEVATION DD

- MAJOR COMPONENTS**
 COMPRESSOR: VRC-2-4
 CYLINDER: 8.50" DIA BORE
 CYLINDER: 4.25" DIA BORE
 CYLINDER: 2.25" DIA BORE
 CYLINDER: 1.125" DIA BORE
 ENGINE: ARROW VRG-330
 COUPLING: REXNORD CMR 262
 COOLER: AXH AIR-COOLERS, MODEL 42W1
 PANEL: ARROW CNG CONTROL

UNLESS OTHERWISE SPECIFIED:
 DIMENSIONS ARE IN INCHES. BREAK SHARP CORNERS .010-.030. SHEET METAL FABRICATION TOLERANCES PER S-8410. CONCENTRICITY (T.L.R.)
 OF ANY TWO MACHINED DIAMETERS AROUND A COMMON AXIS SHALL BE WITHIN 1/2 THE SUM OF THE TOTAL TOLERANCES ON THOSE DIAMETERS.

REV	CHANGE DESCRIPTION	BY	DATE	CHKD	EGR. NO.

REF. NO.	
MODEL:	ARROW GAS DIV.
UNLESS OTHERWISE SPECIFIED	
FRACTIONAL: ± .010	
ANGULAR: MATCH ± 1/2	
X ± .080	
XX ± .030	
XXX ± .010	
SURFACE FINISH: 125 AA	

CUSTOMER: CITY OF NORMAN
 JOB NO.: 10186
 REV. NO.

ARROW TULSA, OKLAHOMA

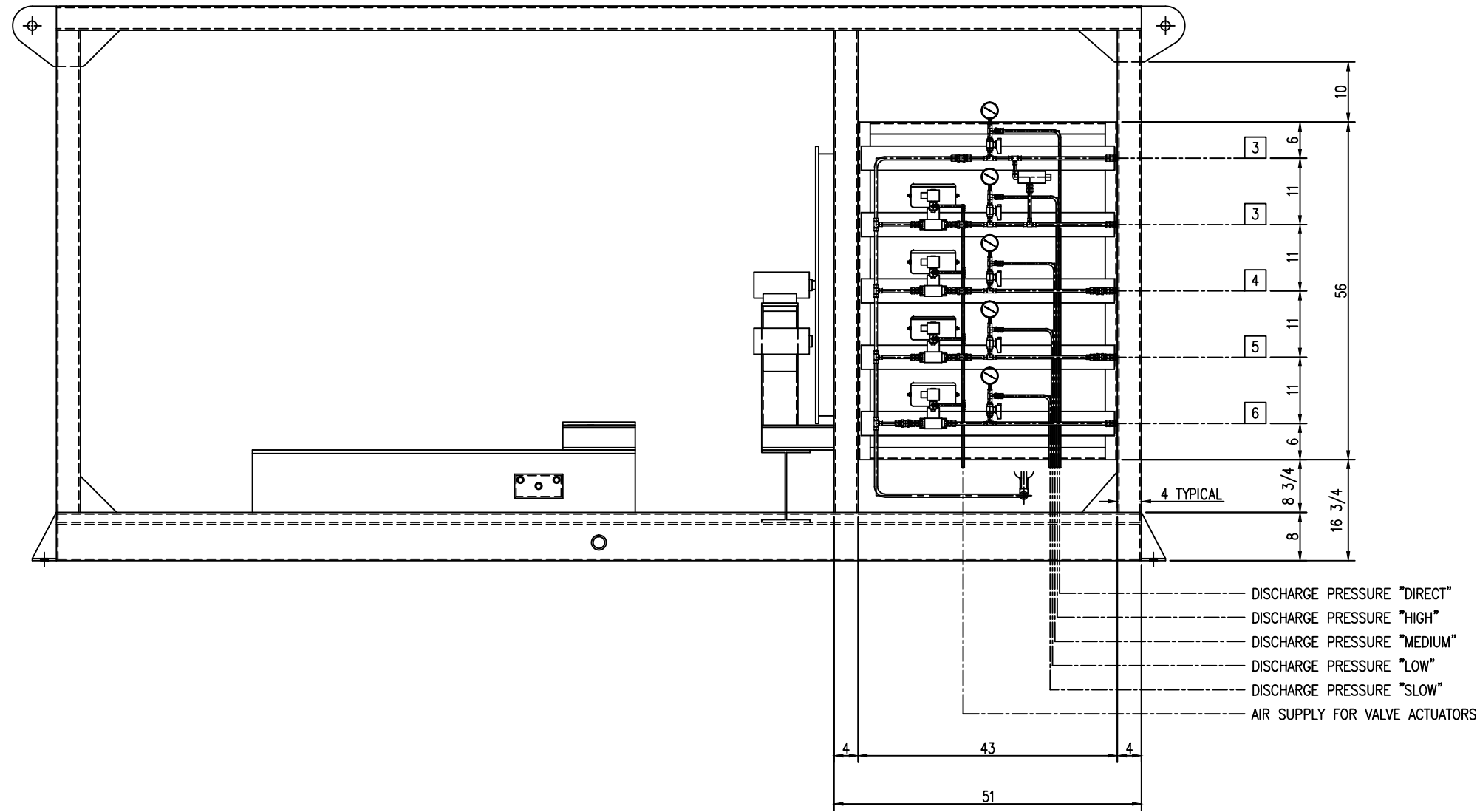
TITLE:
 GENERAL ASSEMBLY - ELEVATION BB & DD

DRWR:	DMV	SCALE:	NONE	MATERIAL:	NOTED
CHKD:	DMV	DATE:	2-1-12	DRAWING NO.	
EGR. NO.:		APP'D:		APP'D UNIT:	

GA-003
 SHEET 1 OF 1

SCHEDULE OF OPENINGS

MARK	QTY	SIZE	RATING	TYPE	SERVICE
1	1	3"	300#	RF	UNIT INLET
2	1	1/2"	6000#	NPT	UNIT OUTLET - DIRECT FILL
3	1	1/2"	6000#	NPT	UNIT OUTLET - HIGH PRESSURE
4	1	1/2"	6000#	NPT	UNIT OUTLET - MEDIUM PRESSURE
5	1	1/2"	6000#	NPT	UNIT OUTLET - LOW PRESSURE
6	1	1/2"	6000#	NPT	UNIT OUTLET - SLOW FILL
7	1	2"	3000#	NPT	RELIEF VALVE HEADER OUTLET
8	1	1"	3000#	NPT	SCRUBBER DRAIN
9	1	1"	3000#	NPT	ENGINE AND COMPRESSOR OIL DRAIN
10	1	1"	3000#	NPT	ENGINE AND COMPRESSOR OIL MAKE-UP
11	1	1/2"	3000#	NPT	DRIP POT DRAIN
12	1	1/2"	3000#	NPT	CUSTOMER AIR SUPPLY
13	1	3"	TUBING	STUB	ENGINE EXHAUST
14	1	1"	3000#	NPT	FUEL GAS INLET
15	1	1-1/2"	3000#	NPT	STARTER GAS INLET



DISCHARGE VALVE RACK

- MAJOR COMPONENTS**
 COMPRESSOR: VRC-2-4
 CYLINDER: 8.50" DIA BORE
 CYLINDER: 4.25" DIA BORE
 CYLINDER: 2.25" DIA BORE
 CYLINDER: 1.125" DIA BORE
 ENGINE: ARROW VRG-330
 COUPLING: REXNORD CMR 262
 COOLER: AXH AIR-COOLERS, MODEL 42VI
 PANEL: ARROW CNG CONTROL

CUSTOMER: CITY OF NORMAN
JOB NO.: 10186
REV. NO.

UNLESS OTHERWISE SPECIFIED: DIMENSIONS ARE IN INCHES. BREAK SHARP CORNERS .010-.030. SHEET METAL FABRICATION TOLERANCES PER S-8410. CONCENTRICITY (T.L.R.) OF ANY TWO MACHINED DIAMETERS AROUND A COMMON AXIS SHALL BE WITHIN 1/2 THE SUM OF THE TOTAL TOLERANCES ON THOSE DIAMETERS.	REF. NO.:	MODEL:	TULSA, OKLAHOMA
	THIS PRINT PROPERTY OF ARROW ENGINE COMPANY AND MAY NOT BE REPRODUCED OR USED IN ANY MANNER WITHOUT THE INTEREST OF SAID COMPANY.		
DRILL HOLE TOLERANCES UNLESS OTHERWISE NOTED NO. 30 TO NO. 1 DIA. +.003 - .000 1/4 TO 1/2 DIA. +.004 - .000 1/2 TO 3/4 DIA. +.005 - .000 3/4 TO 1 DIA. +.007 - .000 1 TO 2 DIA. +.010 - .000	UNLESS OTHERWISE SPECIFIED FRACTIONAL: ± .010 ANGULAR: MACH ± 1/2 X ± .080 XX ± .030 XXX ± .010 SURFACE FINISH: 125 AA	TITLE: GENERAL ASSEMBLY - DISCHARGE VALVE PANEL	
REV *	BY * DATE * CHD * E.C.R. NO. *	DRAWING NO. CA-005 SHEET 1 OF 1	DRAWING NO. CA-005 SHEET 1 OF 1