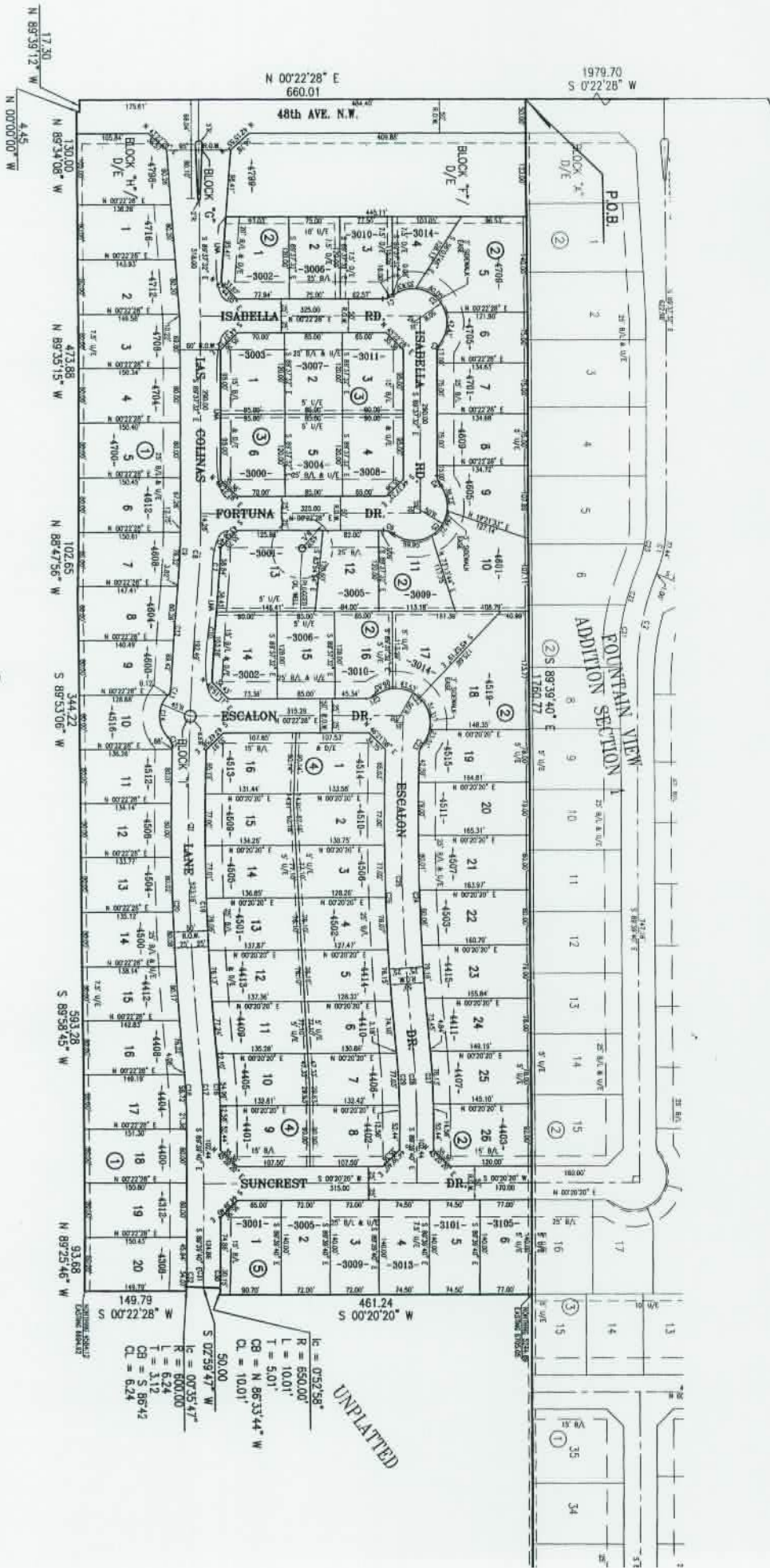


FINAL PLAT
LAS COLINAS ADDITION SECTION 1
 A PART OF THE S. 1/2 OF THE N.W. 1/4, SECTION 15, T9N, R3W, I.M.
 NORMAN, CLEVELAND COUNTY, OKLAHOMA

P.O.C.
 N.W. COR. N.W. 1/4
 SEC. 15, T9N, R3W, I.M.



UNPLATED

UNPLATED