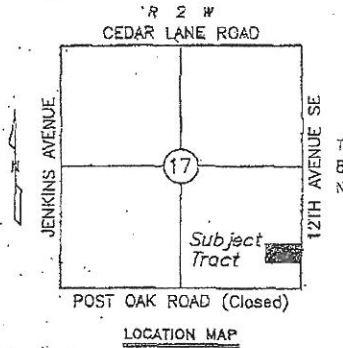


Exhibit "A"

FINAL PLAT OF COBBLESTONE WEST SECTION II
 A FINAL PLAT OF PART OF THE SOUTHEAST 1/4, SECTION 17, T8N, R2W, I.M.
 Norman, Cleveland County, Oklahoma



Doc# P 2007 22
 Bk# Pg# 24, 21 123
 Filed: 04-20-2007
 12:11:40 PM
 Cleveland County, OK

#22
 STATE OF OKLAHOMA
 COUNTY OF CLEVELAND
 FILED FOR RECORD
 APR 20 2007 12:11:40 PM
 Book 201 Page 148
 JAMES H. HOWARD, County Clerk
 BY [Signature] Deputy

