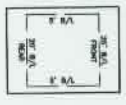
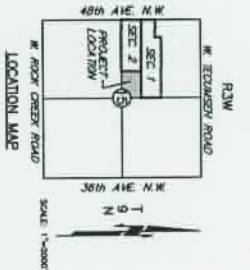
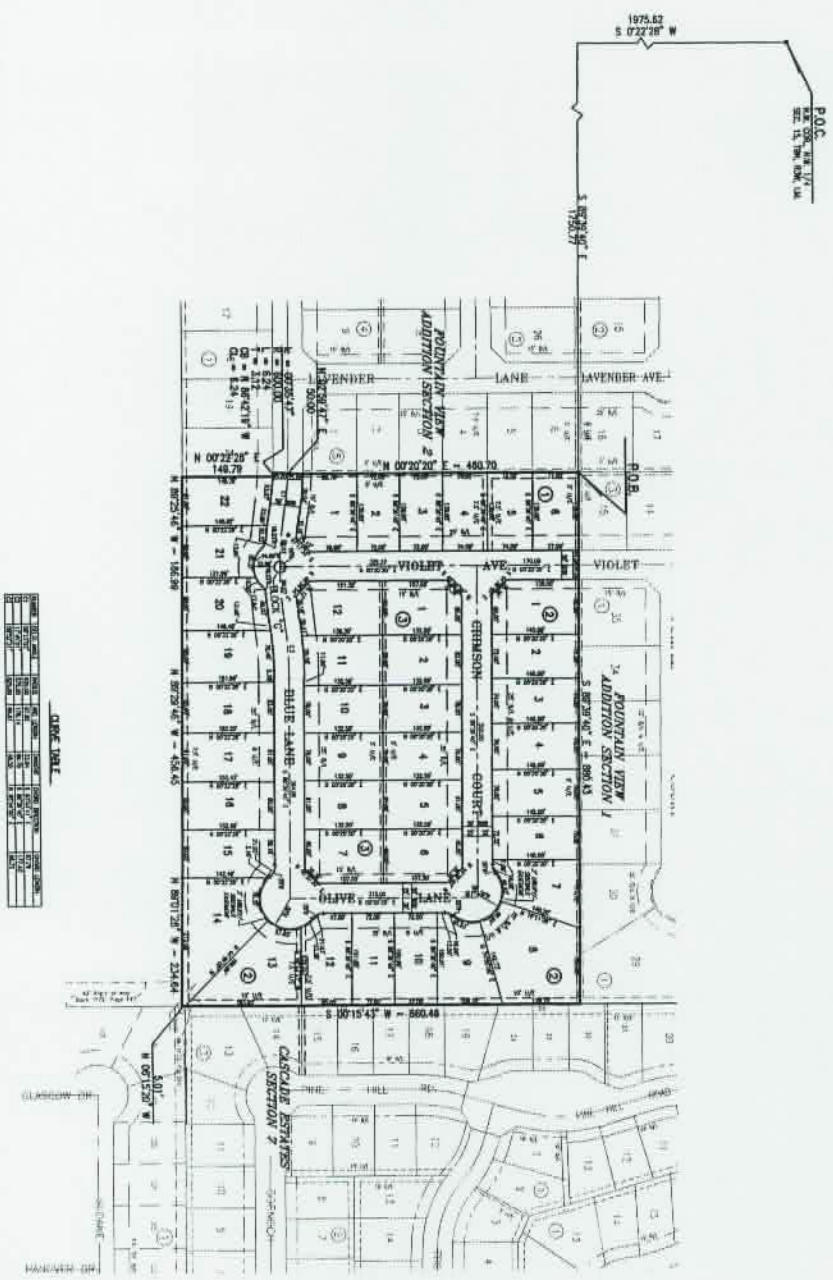


**FINAL PLAT**  
**FOUNTAIN VIEW ADDITION SECTION 3**  
 A PART OF THE S. 1/2 OF THE N.W. 1/4, SECTION 15, 79N, R3W, 14M.  
 NORMAN, CLEVELAND COUNTY, OKLAHOMA



**TYPICAL BUILDING SETBACKS**  
 5 FEET

TOTAL LOTS = 40 RESIDENTIAL LOTS

RENDERING BASED ON A PROFESSIONAL SURVEY BY  
 M. L. & S. L. MOORE, INC.  
 DATE: 11/15/2011

**ONE INCH**

1/4" = 100'	1/8" = 200'	1/16" = 400'	1/32" = 800'	1/64" = 1600'
1/128" = 3200'	1/256" = 6400'	1/512" = 12800'	1/1024" = 25600'	1/2048" = 51200'

NOTE: THE LIMIT OF MEASUREMENT SHOWN FOR ALL DIMENSIONS ON THE FINAL PLAT IS FEET.

WITH 30.00% TO BE SET AS RESERVED  
 IN ACCORDANCE WITH THE  
 OKLAHOMA CONSTITUTION

Date: August 13, 2013  
 By: Consulting Engineers, P.C.  
 815 N. Main Street  
 Norman, OK 73069  
 FOUNTAIN VIEW ADDITION SECTION 3  
 SHEET 2 OF 3