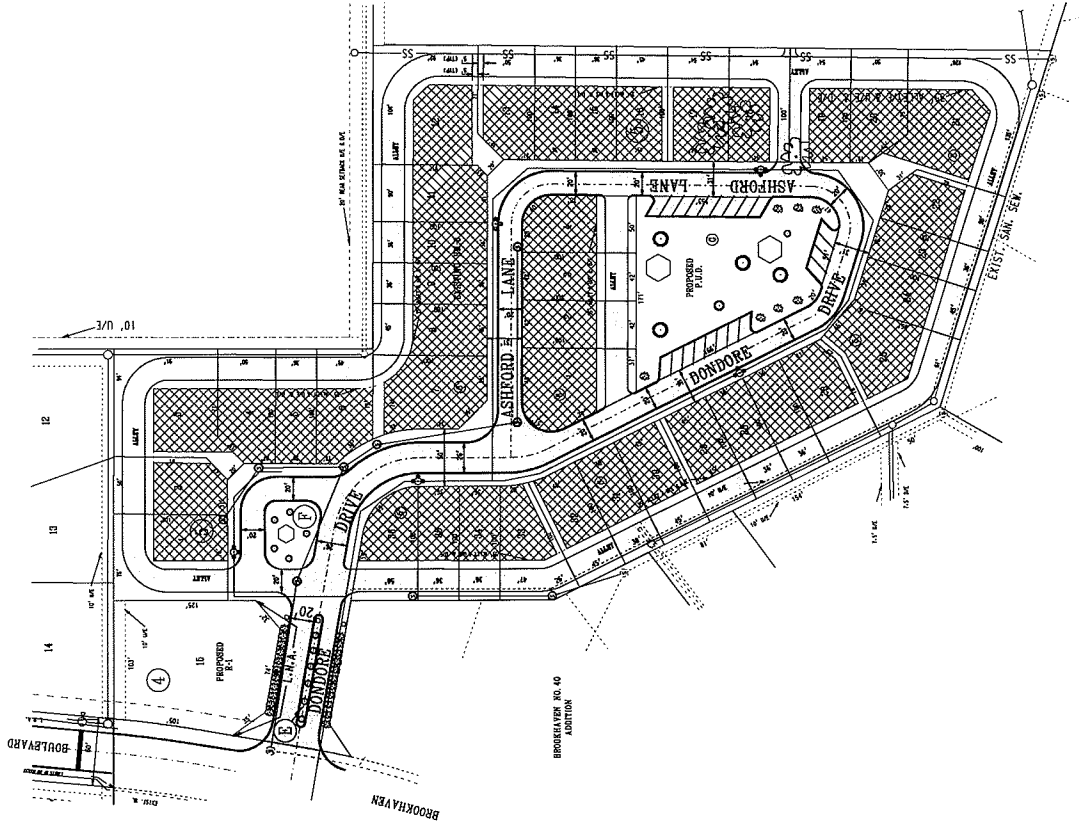
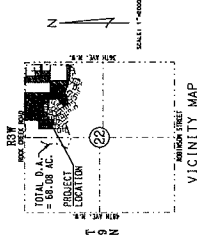


BROOKHAVEN NO. 41 ADDITION
 NE 1/4, SECTION 22, T9N, R3W, I.M.
 NORMAN, CLEVELAND COUNTY, OKLAHOMA
PRELIMINARY SITE DEVELOPMENT PLAN

PAVING ST 01



▨ - DENOTES BUILDABLE AREA



DEVELOPER:
 1205 Brookhaven Boulevard
 Norman, Oklahoma 73072
 405-359-0250

ENGINEER/SURVEYOR:
 CLOUD PLANNING & ENGINEERING SERVICES, LLC
 405 Bannister Court
 Norman, Oklahoma 73072

CPES	ENGINEERS
	PLANNERS
Cloud Planning & Engineering Services <small>INCORPORATED</small> 405 BANNISTER COURT NORMAN, OKLAHOMA 73072 TEL: 405-359-0250 FAX: 405-359-0251 WWW.CLOUDPES.COM	
BROOKHAVEN NO. 41 ADDITION <small>NORMAN, CLEVELAND COUNTY, OKLAHOMA</small>	
PRELIMINARY SITE DEVELOPMENT PLAN	
<small>DATE: 01/11/2011</small> <small>BY: [Signature]</small> <small>SCALE: AS SHOWN</small>	<small>DATE: 01/11/2011</small> <small>BY: [Signature]</small> <small>SCALE: AS SHOWN</small>
Sheet 3 of 3 P-029	